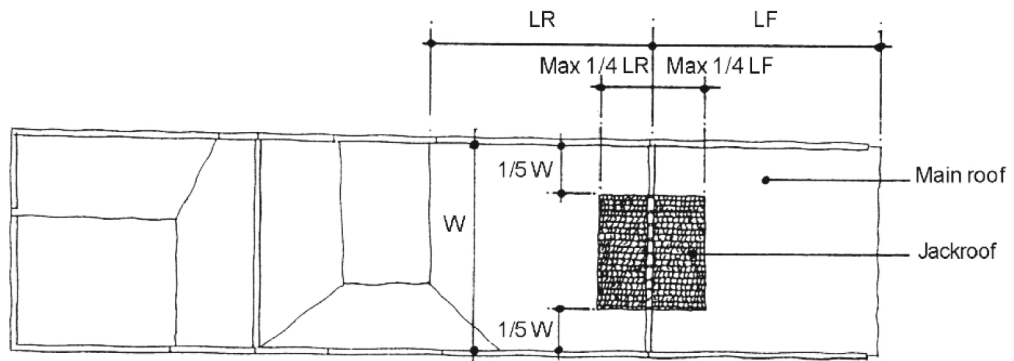
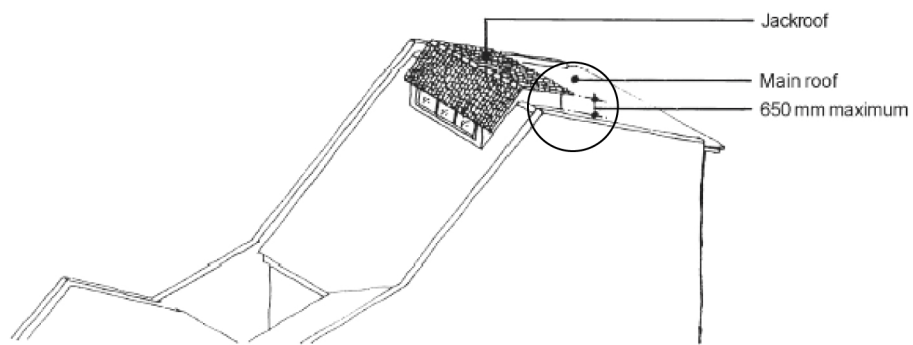


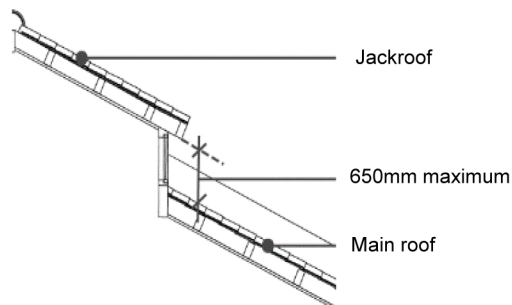
Figure 1 : Jackroof



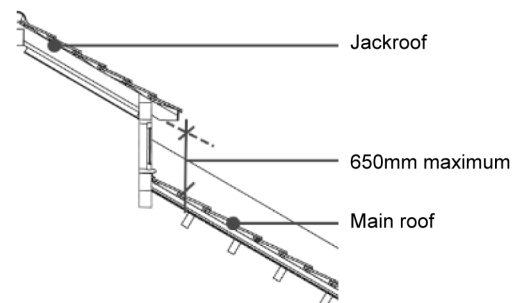
ROOF PLAN



ISOMETRIC VIEW



Jackroof with v-profile roof tiles



Jackroof with flat roof tiles

ALLOWABLE HEIGHT OF JACKROOF

Figure 2 : Allowable Structures on Existing Flat Roofs

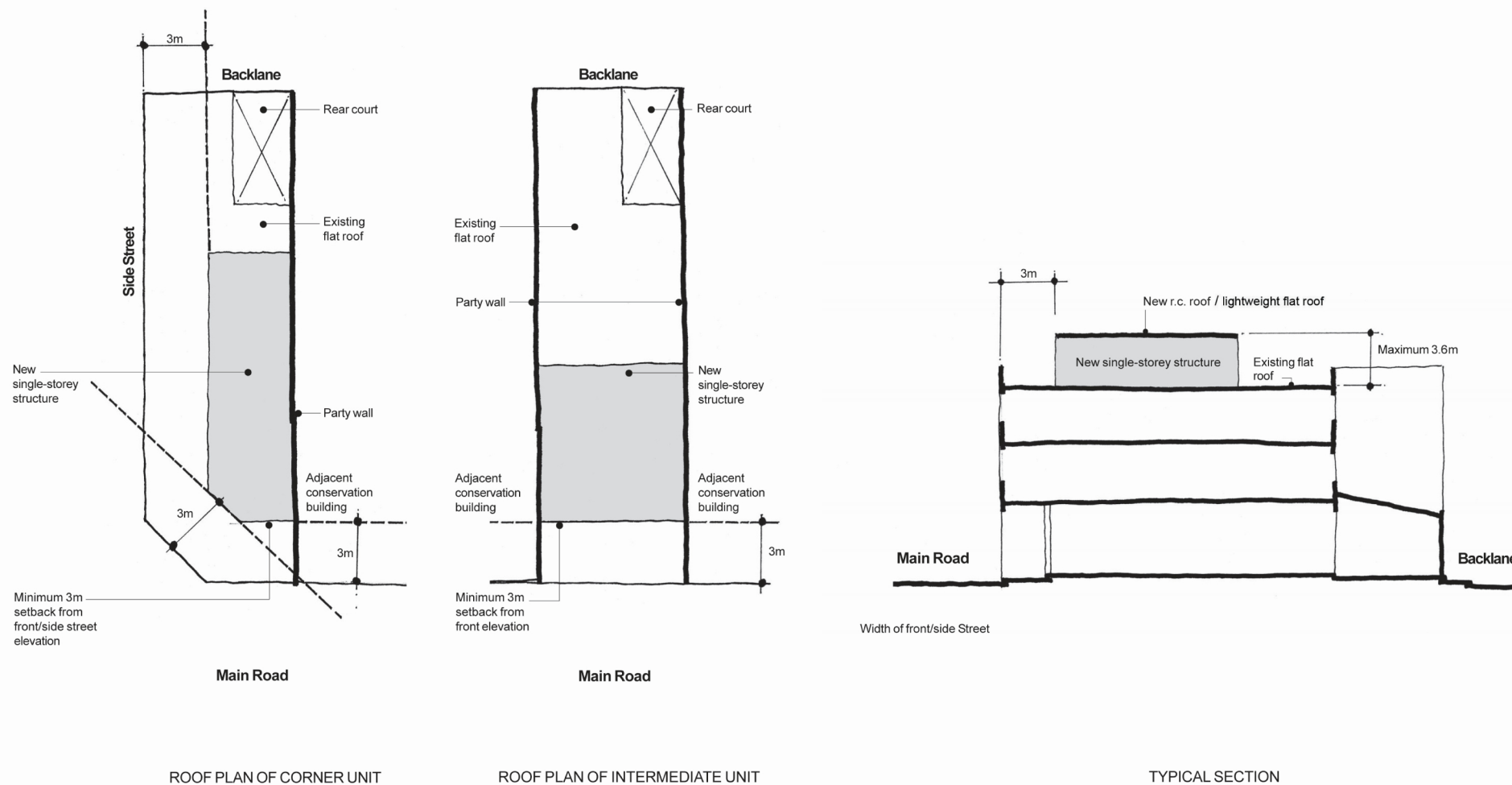


Figure 3 : Secondary Windows

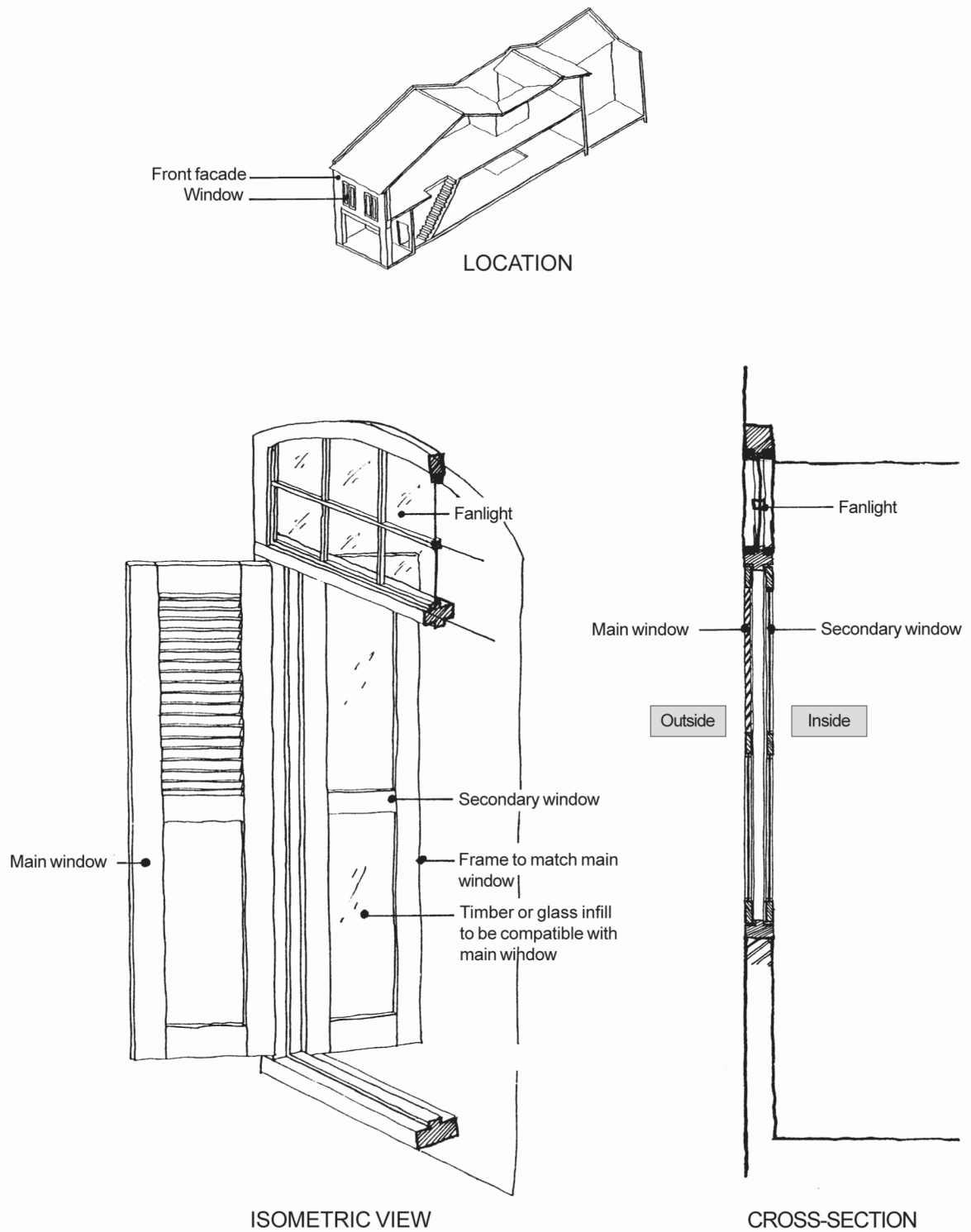


Figure 4 : Canopy

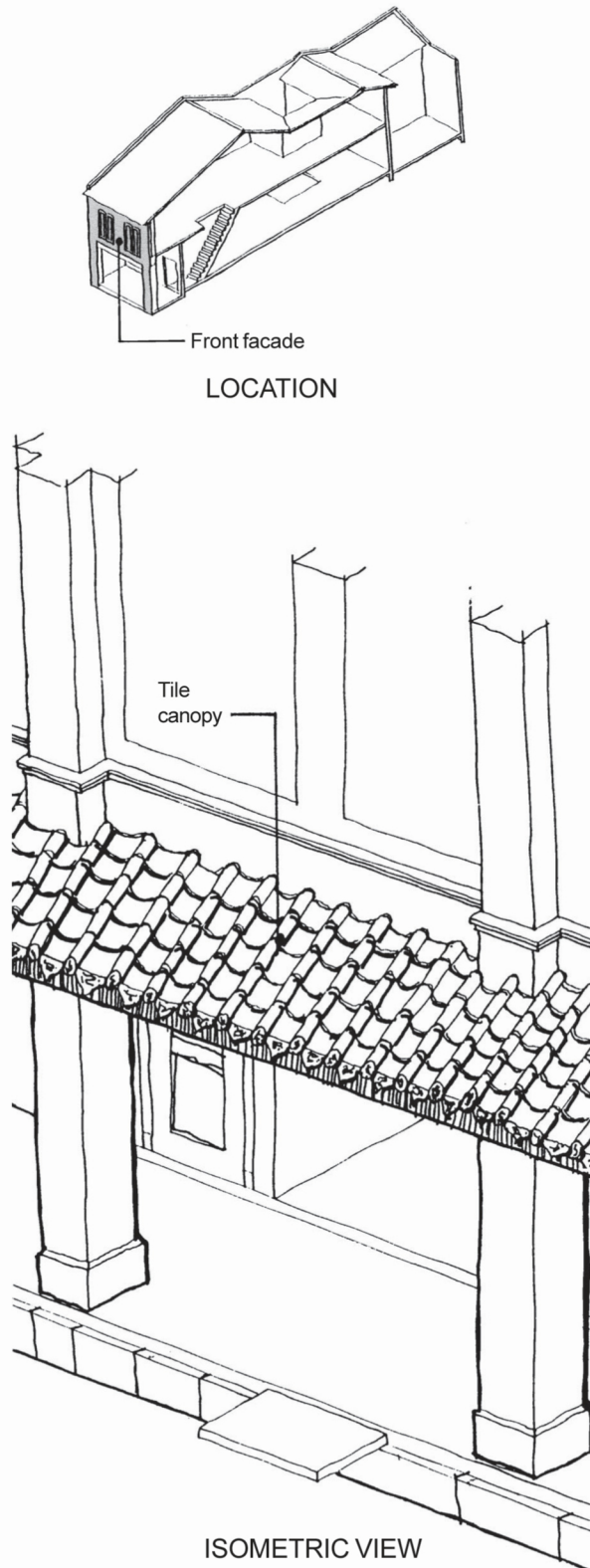


Figure 5 : Retractable Awning

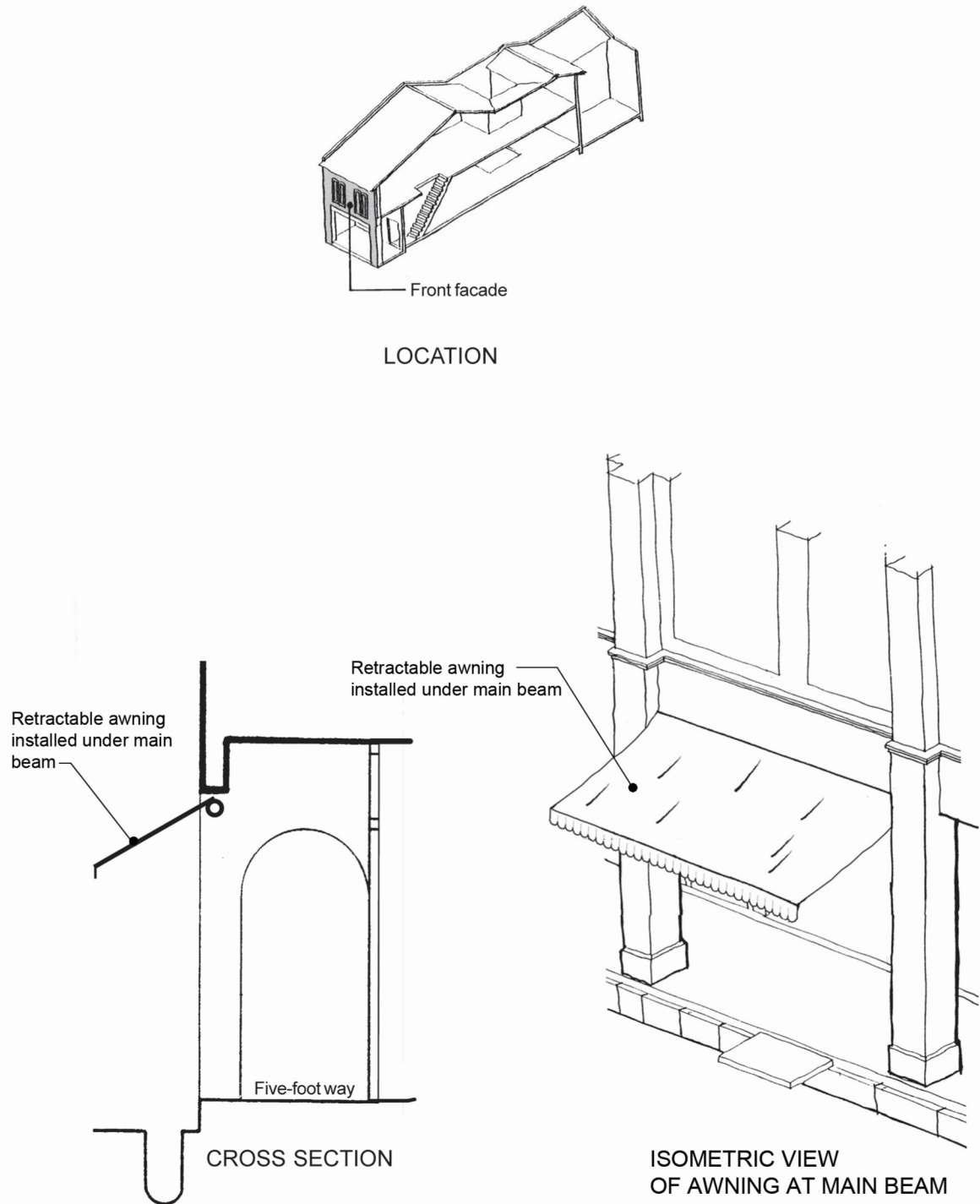


Figure 6 : Five-Foot Way Floors

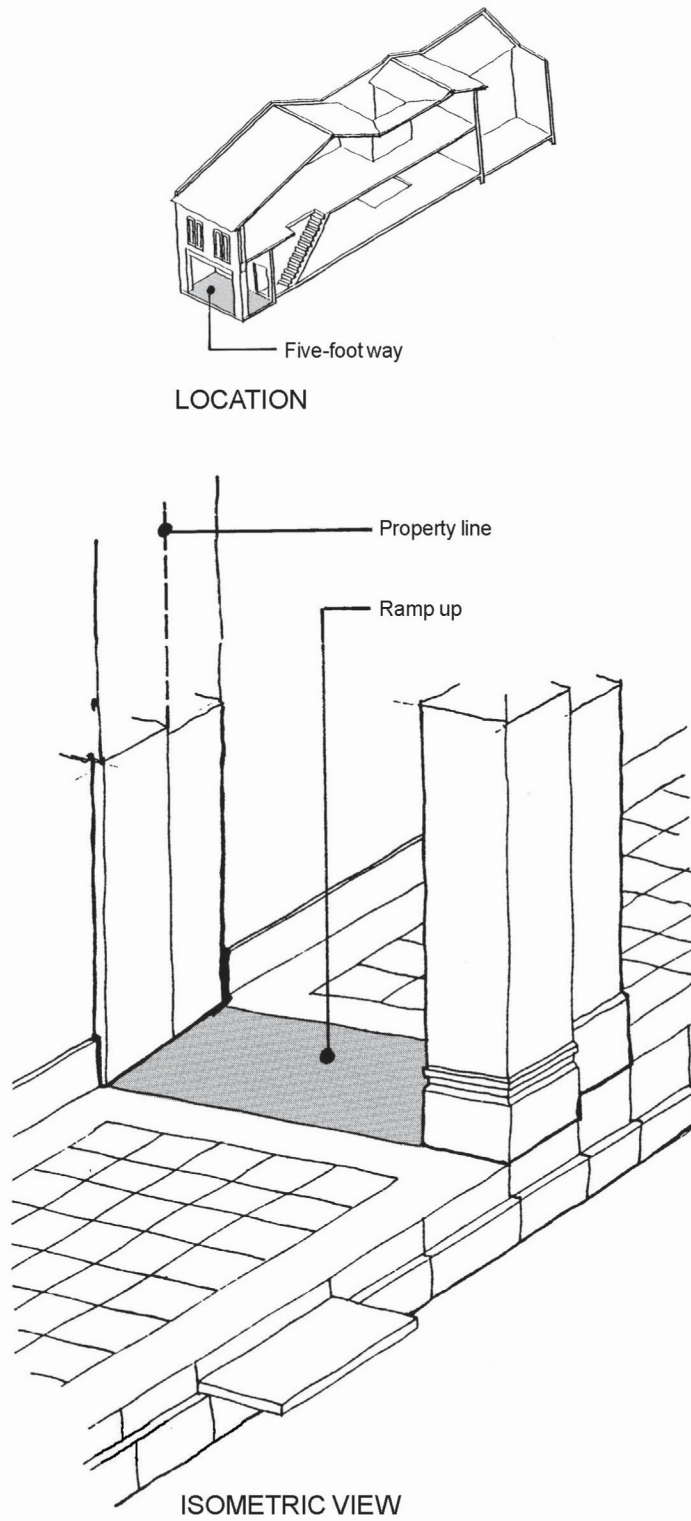


Figure 7 : End Gable Wall

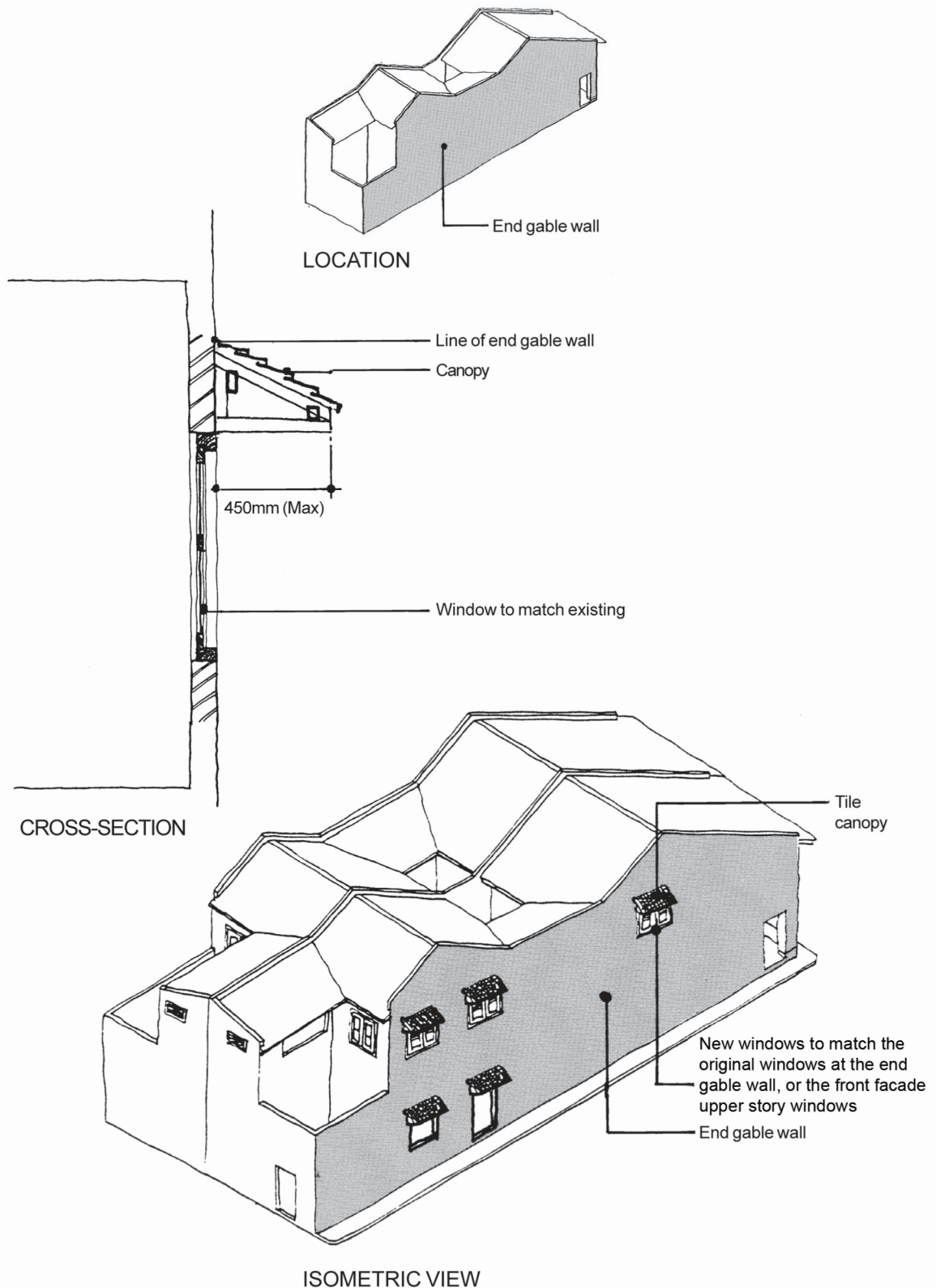
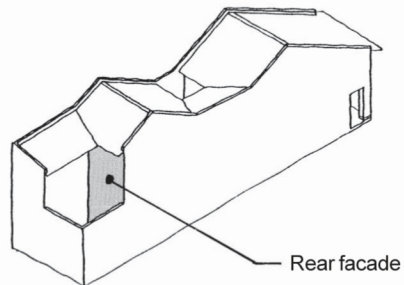
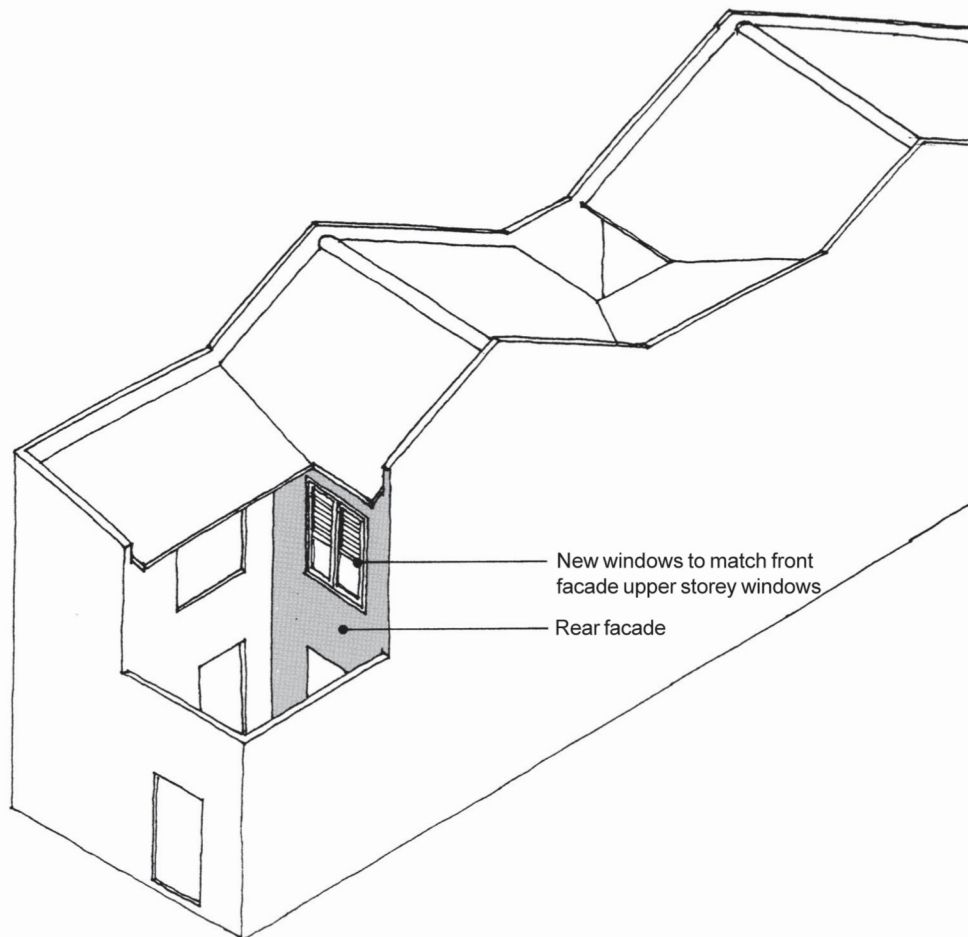


Figure 8 : Rear Facade of Main Building

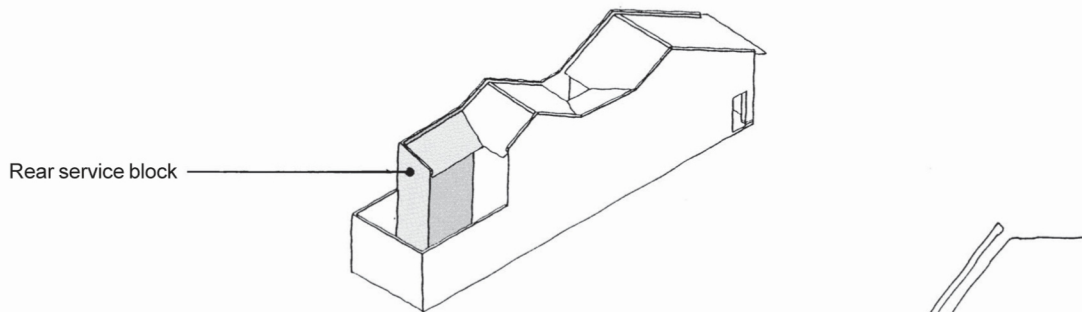


LOCATION

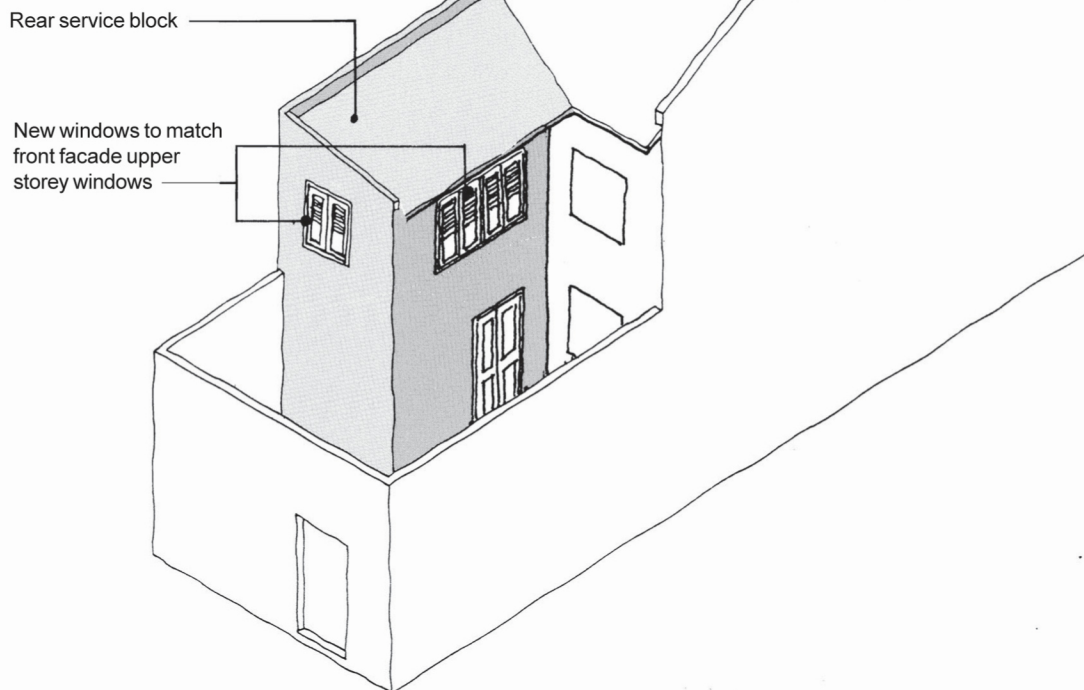


ISOMETRIC VIEW

Figure 9 : Rear Service Block



LOCATION



ISOMETRIC VIEW

Figure 10 : Rear Court and Rear Boundary Wall

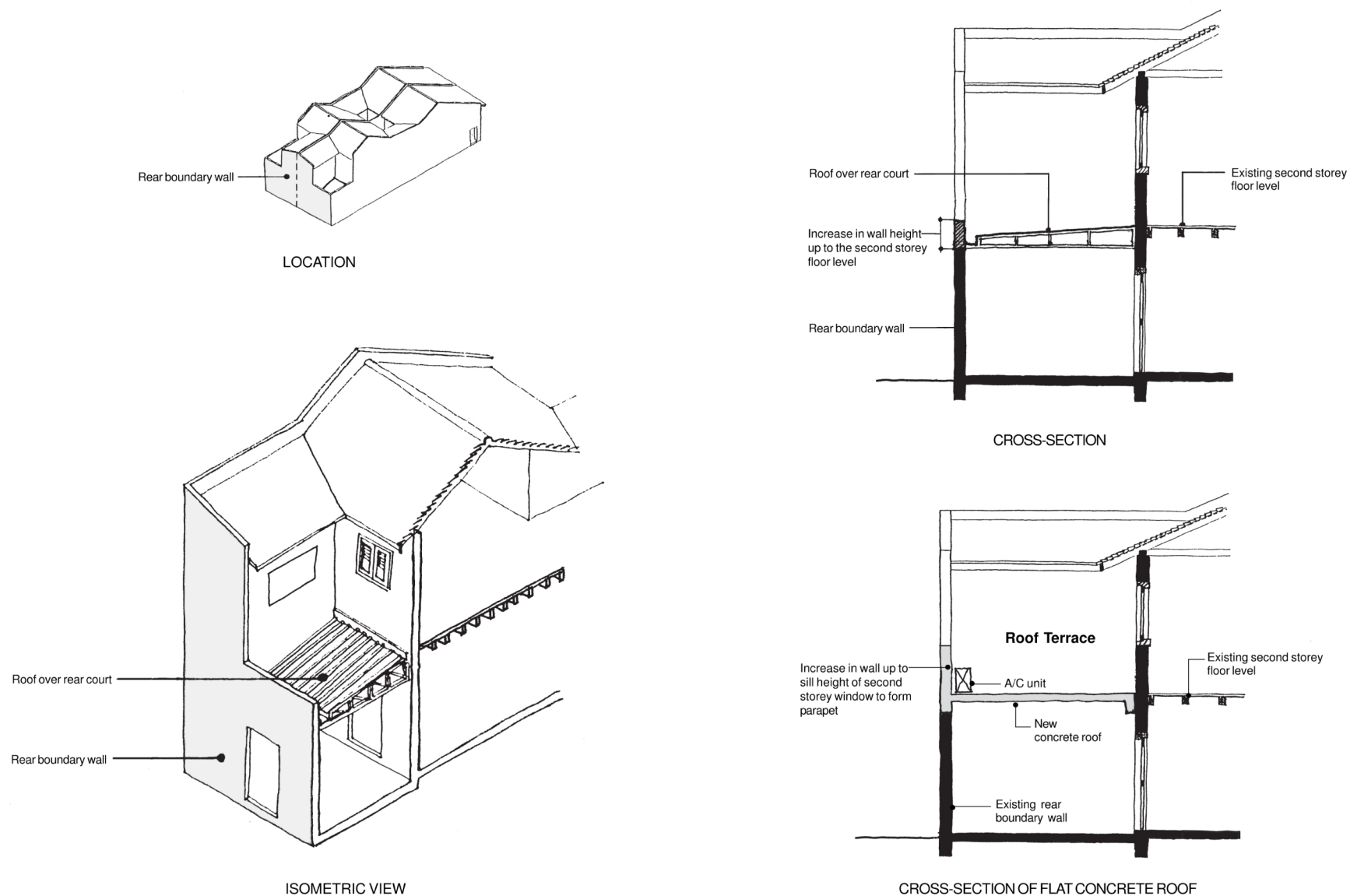
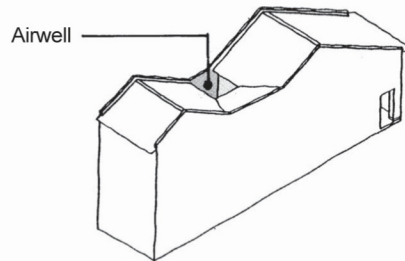
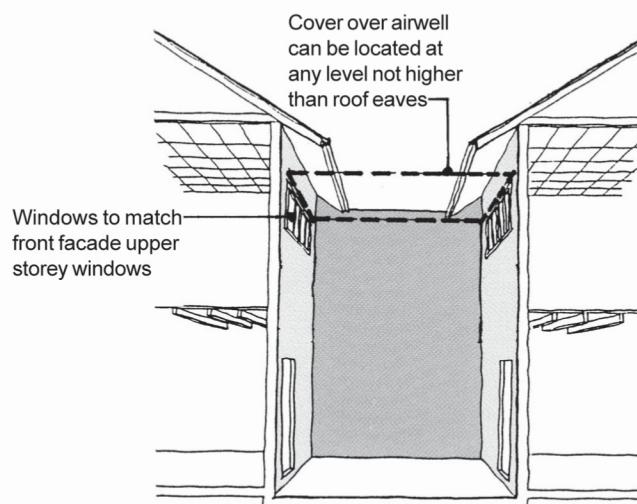


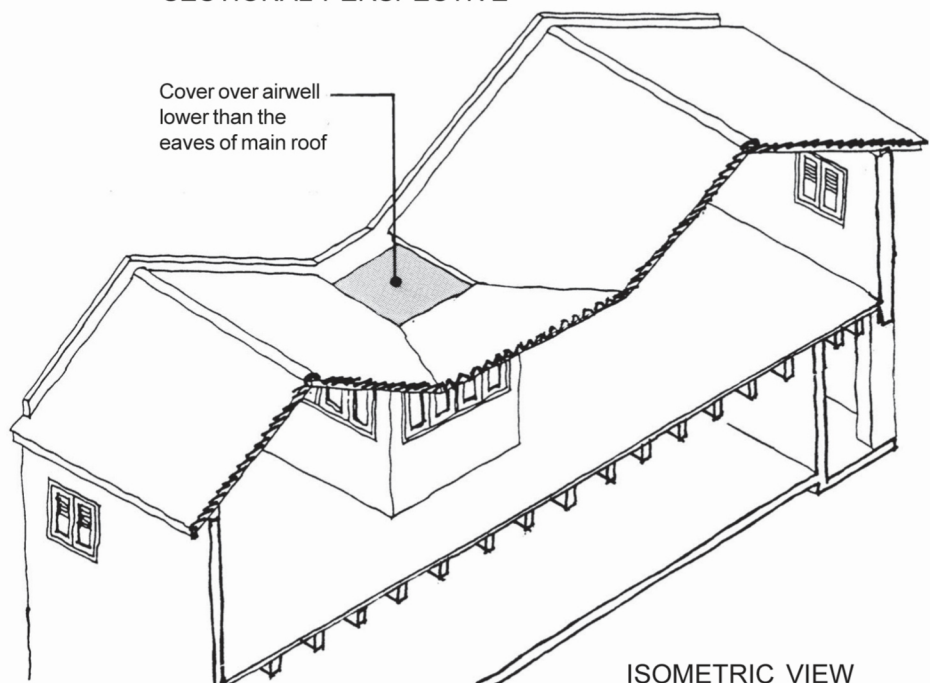
Figure 11 : Airwell



LOCATION

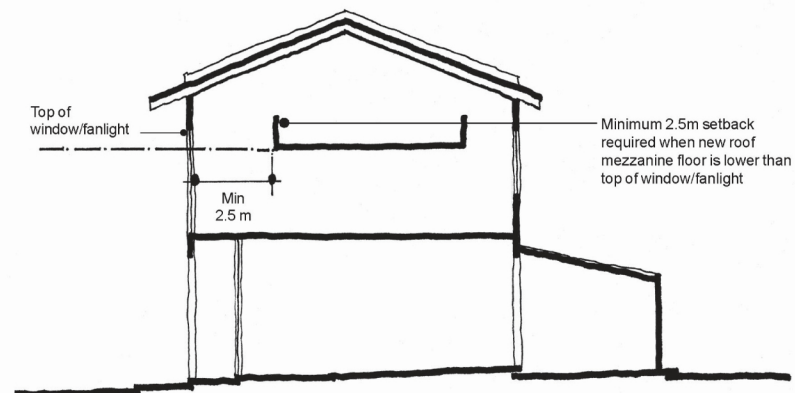
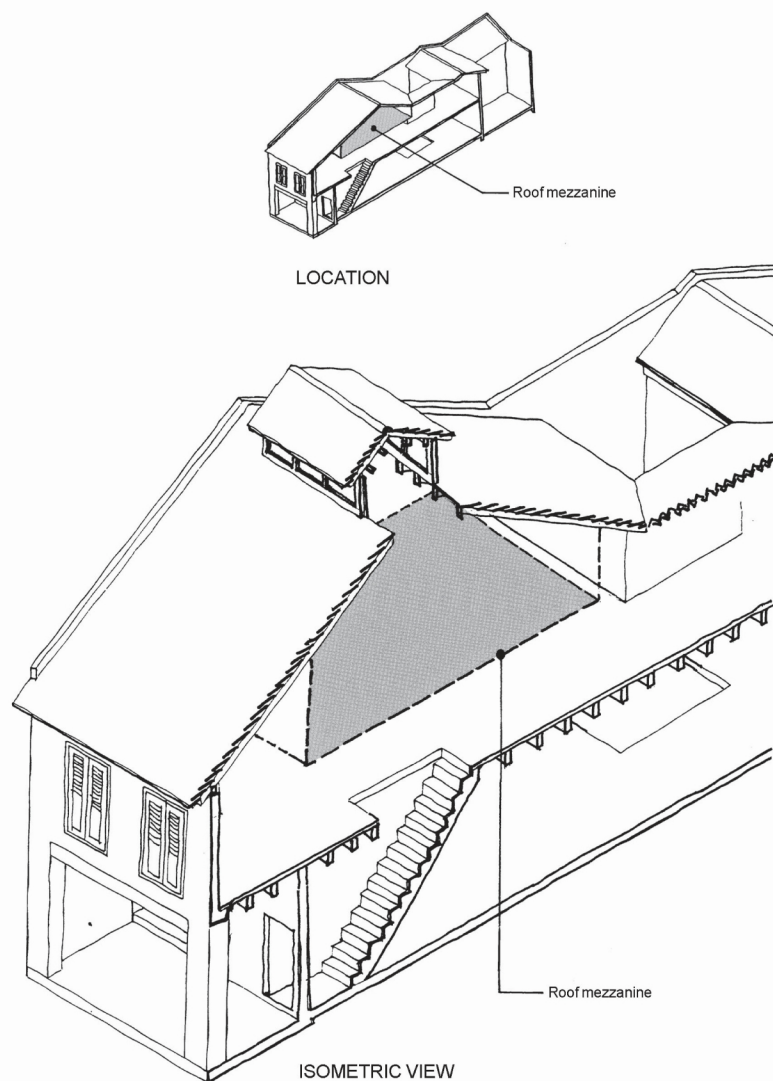


SECTIONAL PERSPECTIVE



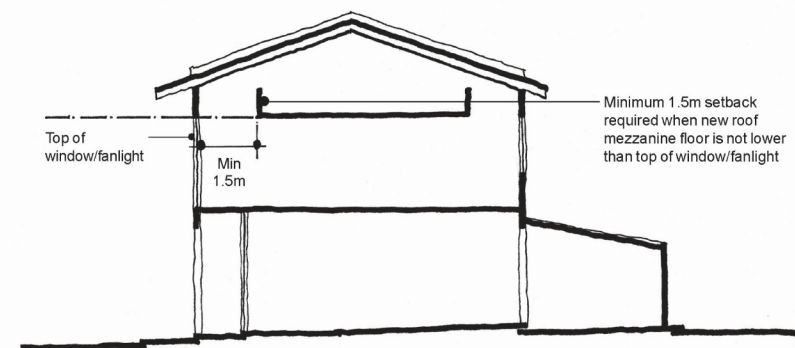
ISOMETRIC VIEW

Figure 12 : Roof Mezzanine



CROSS-SECTION

Note : The heights of both the uppermost floor and new roof mezzanine shall comply with relevant technical department's requirements.



CROSS-SECTION

Figure 13 : Flue

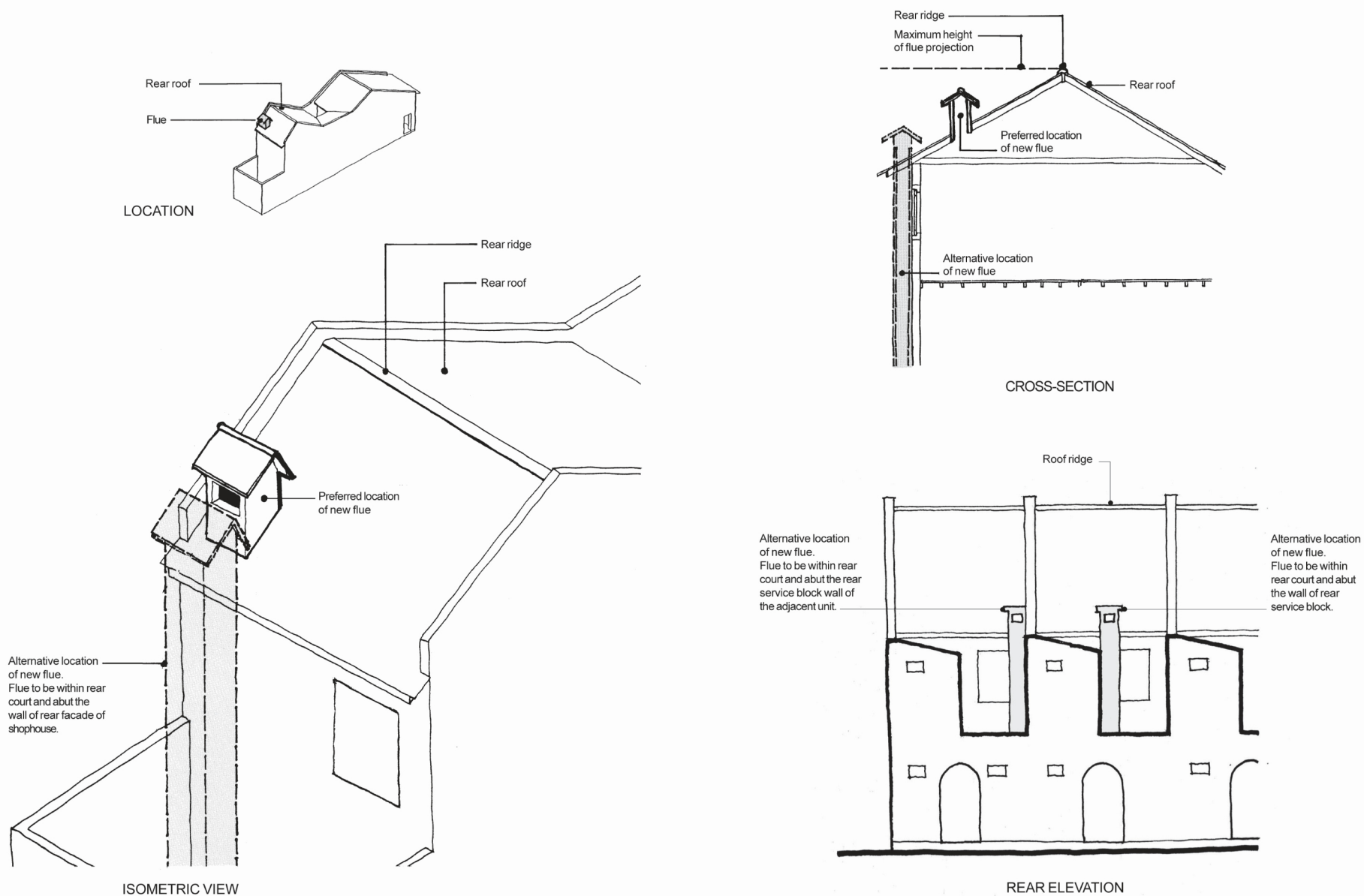
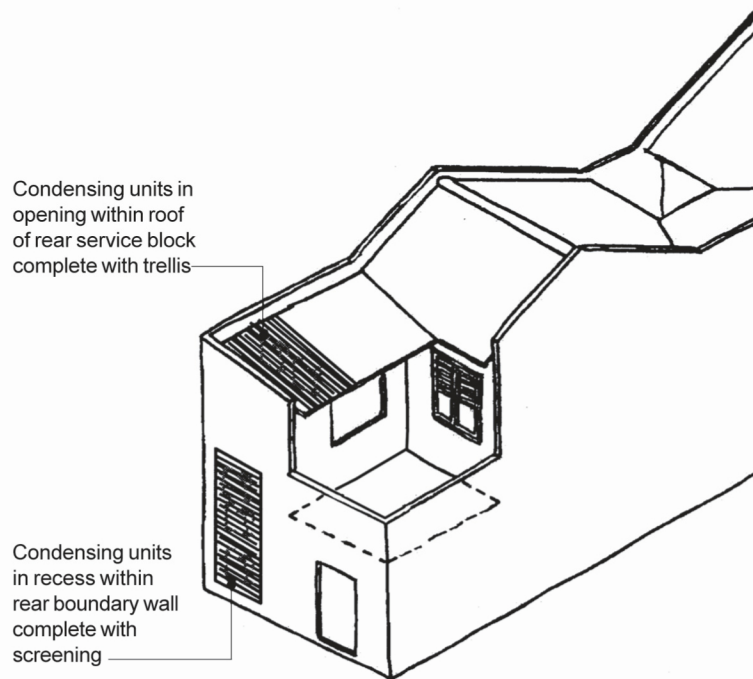
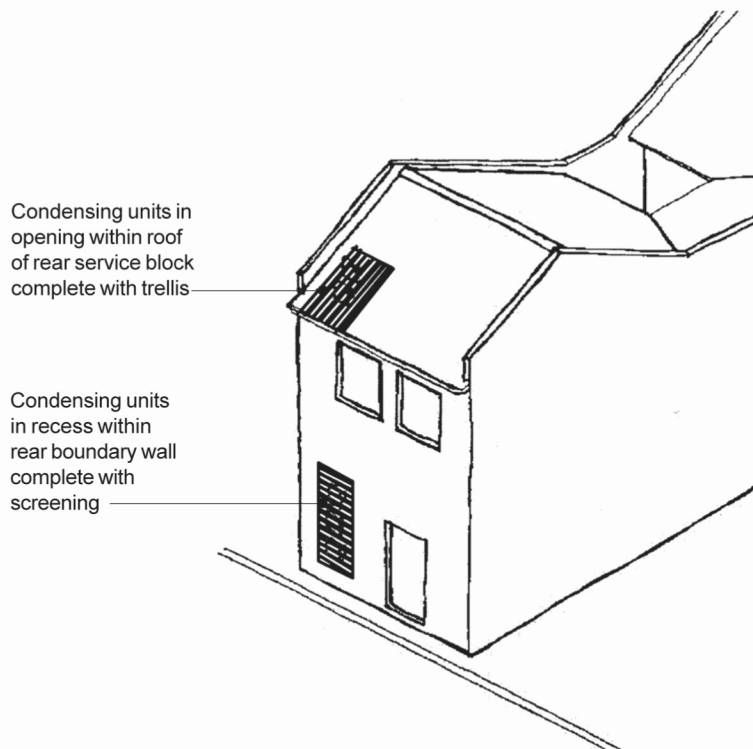


Figure 14 : Condensing Units Integrated within Building Envelope



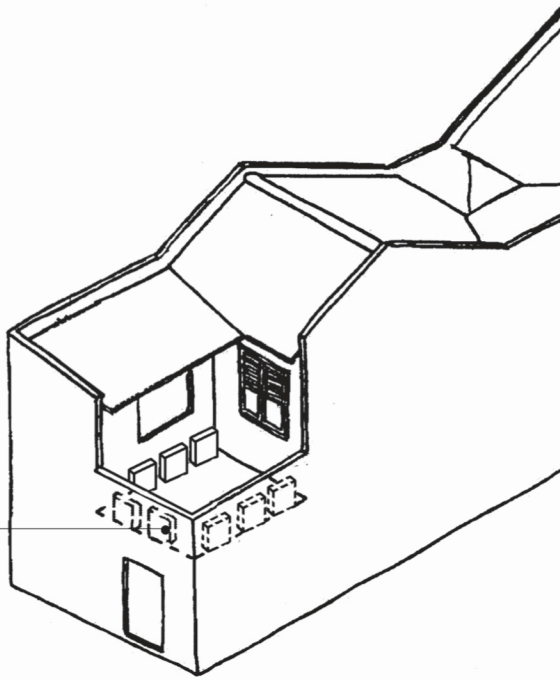
SHOPHOUSES WITH REAR COURT



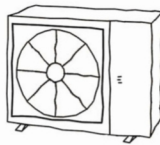
SHOPHOUSES WITHOUT REAR COURT

Figure 15 : Condensing Units Placed at Rear Parapet and Walls

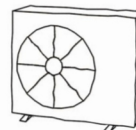
Condensing units
neatly or compactly
placed at the rear.
Units are to be
screened unless
they are small and
not visible from
street level
(See examples
below)



SHOPHOUSES WITH REAR COURT

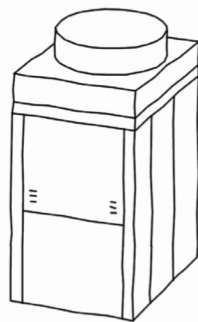


Single unit

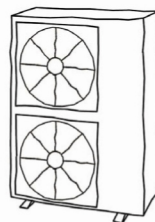


Single unit

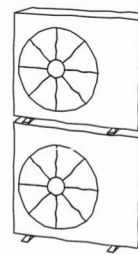
**SCREENING NOT REQUIRED FOR THE ABOVE EXAMPLES OF
CONDENSING UNITS**



VRV



Dual unit



Single unit - stacked

**SCREENING REQUIRED FOR THE ABOVE EXAMPLES OF
CONDENSING UNITS**