

51 JOO CHIAT TERRACE

Switching Spaces



Owner:

Ms Canny Teo Keng Hong

Architect:

ONG&ONG Pte Ltd

Engineer:

KKC Consultancy Services

Contractor:

W'Ray Construction Pte Ltd

The restoration work on the façade of this Late shophouse-style residential terrace has been expertly done. However, it is the bold reversal of its internal spaces that makes this achievement something to flip over.

A Freshened Façade

Amidst the historical setting of the Joo Chiat conservation district, this two-storey family terrace house has had its façade restored in adherence to the 3R principles. The original doors, windows and decorative mouldings and motifs have been faithfully returned to their original state after careful repair and paintwork. The textured colour glass on the fanlights of the second-storey windows, an important period detail, have been well reinstated, with its broken pieces replaced with old pieces of similar appearance and colours sourced from antique shops.

Re-engineering the Heart

Behind the traditional façade of the restored building are interior spaces that have been boldly reinvented. Adhering to the owner's brief, the architects followed through on the idea of reversing the common living areas of the house. The master bedroom, typically on the second storey, was relocated to the ground level while the living room and kitchen were moved upstairs.



Late shophouse-style residential terrace restored

Although an atypical configuration for houses of this era, this re-engineering of the interior volume has successfully invigorated the living spaces, showcasing a fresh alternative at maximising the otherwise tight footprint of the house.

As a result of the bold move, the common areas of the house on the second floor has been transformed into a contiguous volume of bright, column-free and convivial spaces for contemporary family living. Clever use of dividing walls and panels on the ground level conceal a study, much-needed storage space, as well as a master bedroom sanctuary at the rear with its very own outdoor garden.

Reaching New Highs

In addition to the reconfiguration of its interior volume, the project entailed a new three-storey

rear extension for the conserved building. In scale, height and proportion that echo that of the original house, the rear block was well conceived and built. The choice of materials and design of the new are contemporary yet compatible with the old.

As a whole, the project demonstrates how limited square footage can be tastefully transformed with maximum creativity and resourcefulness to meet the functional requirements of a modern family.



Ornate second storey front façade



Attic bedroom naturally lit



Decorative panel below second storey window



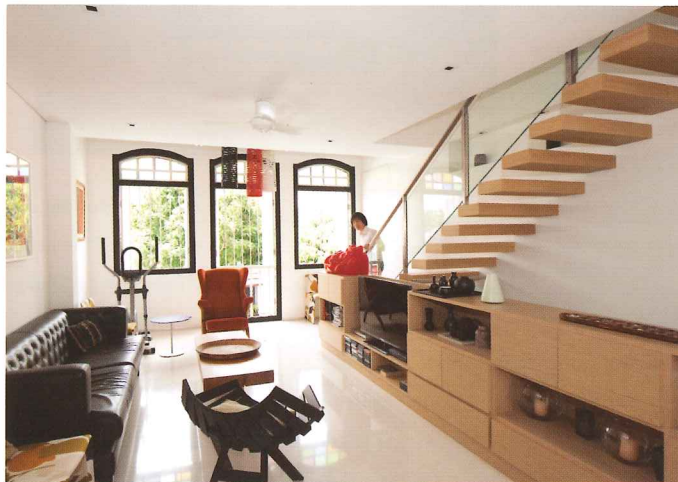
Fanlight with textured colour glass



Outdoor balcony with spiral staircase reminiscent of an old shophouse



Attic set back to maintain spacial quality



Second storey transformed into family living area



Rear garden at first storey