
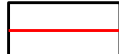
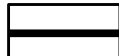
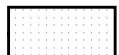

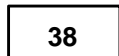


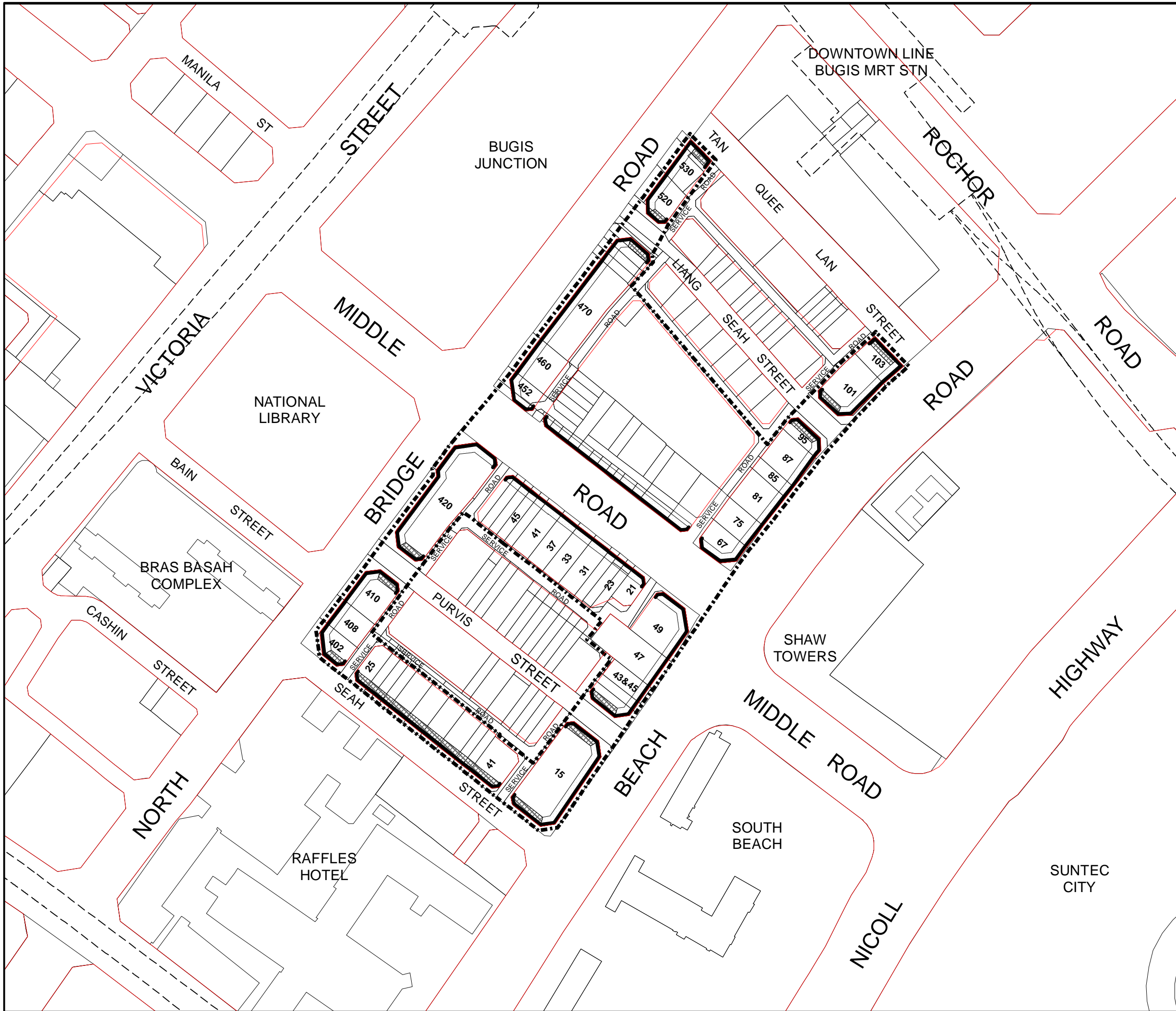
**URA / CUD PLAN
RELEASE 7/2008E**

**STREETBLOCK PLAN FOR
BEACH ROAD, NORTH BRIDGE
ROAD, MIDDLE ROAD AND
SEAH STREET
(DOWNTOWN CORE
PLANNING AREA)**

URBAN DESIGN PLAN

LEGEND

-  Boundary for Streetblock Plan
-  Line of Road Reserve
-  Development to be built up to the Line of Road Reserve
-  Minimum 3.6m Wide and 3.0m clear Covered Walkway
-  Minimum 3.0m Wide and 2.4m clear Covered Walkway
-  House Nos.



SCALE : 1:2000

0 50 M

DRWG NO : DT/2008/002

DATE : NOV 2008

DIVISION : C & UD



URBAN REDEVELOPMENT AUTHORITY
To make Singapore a great city to live, work and play in