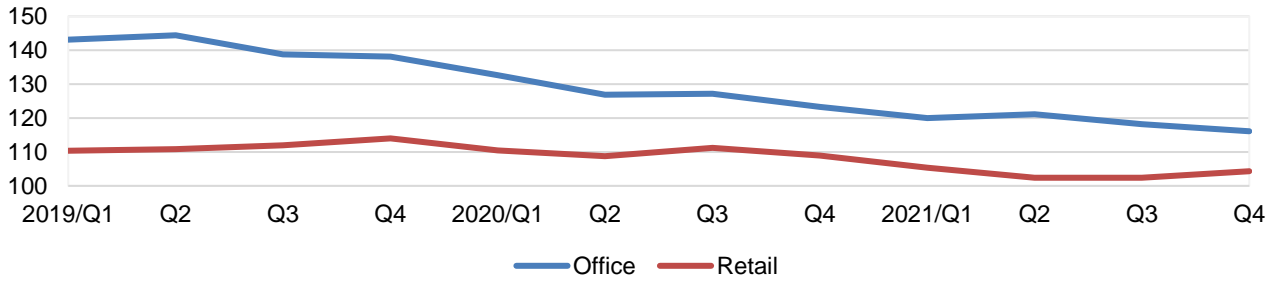
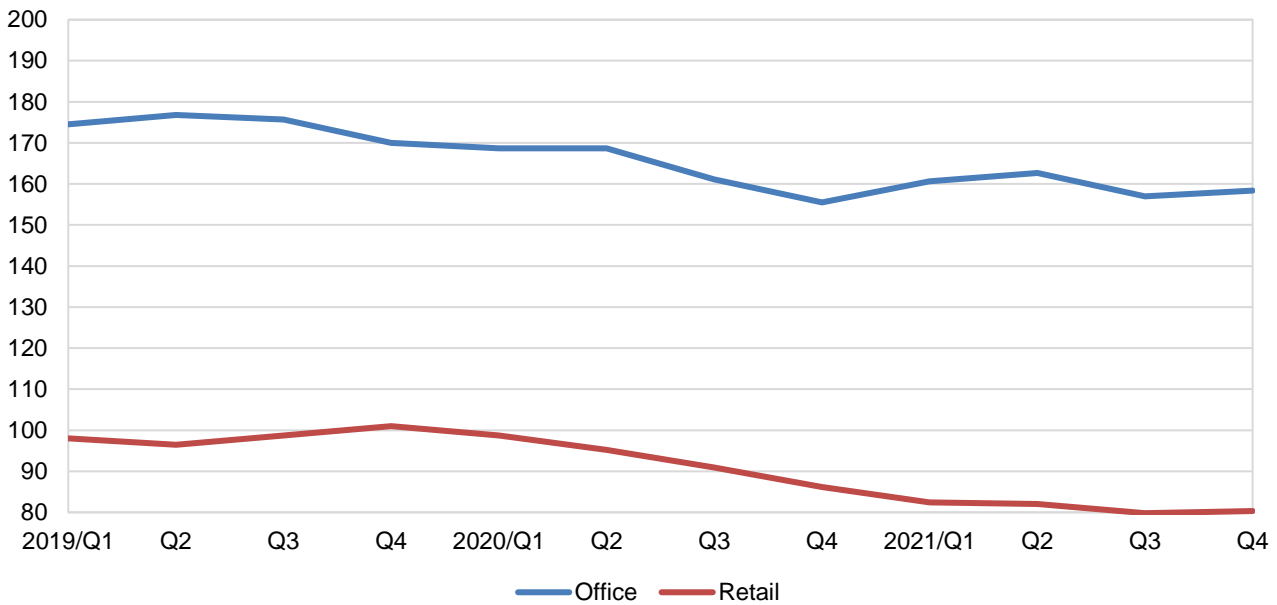


Property Price Index for Office and Retail Space in Central Region



Rental Index for Office and Retail Space in Central Region



Price and Rental Index of Office and Retail Space in Central Region

Period	Price Index ¹		Rental Index ²	
	Office Space	Retail Space ³	Office Space	Retail Space ³
1Q/2019	143.1	110.4	174.5	98.0
2Q/2019	144.4	110.8	176.8	96.5
3Q/2019	138.8	112.0	175.7	98.7
4Q/2019	138.1	114.0	170.0	101.0
1Q/2020	132.6	110.5	168.7	98.7
2Q/2020	126.9	108.8	168.7	95.2
3Q/2020	127.2	111.2	161.1	90.9
4Q/2020	123.3	108.9	155.5	86.2
1Q/2021	120.0	105.4	160.6	82.4
2Q/2021	121.1	102.4	162.7	82.0
3Q/2021	118.2	102.4	157.0	79.8
4Q/2021	116.1	104.3	158.4	80.3

¹ The price indices are compiled from information in caveats lodged at the option stage with the Singapore Land Registry. The prices in 4Q98 are used as the base reference price of the index (i.e. the index for 4Q98 assumes a value of 100).

² The data for the rental indices of office and retail space are obtained from Inland Revenue Authority of Singapore (IRAS).

³ This refers to the space used for shop, food & beverage (F&B), entertainment and health & fitness purposes.