

**Our city is filled with our hopes and dreams. Long-term planning has enabled us to make them a reality, shape a home that reflects our shared visions, and prepare for the future. How can we continue to build a Space for Our Dreams?**

# Space For Our Dreams



# Making Choices Today for Tomorrow

As both a city and a country, we must not only plan for enough homes, workplaces, recreation areas and spaces for everyone, but also cater for critical infrastructure such as utilities and reservoirs, seaports, airports, and more.

Long-term plans, previously known as Concept Plans, are strategic land use and transportation plans that chart the transformation of Singapore's physical landscape. Since the first Concept Plan in 1971, they are typically reviewed every 10 years to actively shape our city and plan for the future.

Long-term planning is about:

A balancing act of our diverse needs.

Optimising space creatively to overcome our physical limits.

Catering for future options to address unforeseen needs and opportunities.

Working together to create liveable and loveable places for all.

In the next few decades, we will have the opportunity to develop large parcels of land marked as "Future Development Areas" for a wide range of uses. These, along with "Reserve Sites" and "White Sites", will give us more room to adjust our plans to respond to a dynamic future.

As part of the latest review of our long-term plans, we engaged

more than **15,000** people from all walks of life

over **50** sessions

from **talks, online surveys, to in-depth discussions**

that were held from July 2021 to April 2022.

We have considered their views in formulating the plans and possibilities that will guide how Singapore caters for its needs in the next 50 years and beyond.

# Live

WELL AND TOGETHER

Housing is at the heart of Singapore's high-quality living environment. Besides meeting our basic need for shelter, it contributes to a strong sense of ownership and belonging among Singaporeans. As our population ages and households become increasingly diverse, we will continue to transform our living environment to accommodate these shifts.



1

## More Homes for New Needs and Aspirations



Providing inclusive and accessible homes for all continues to be central to Singapore's housing goals. We will:

**Develop new towns that are sensitively integrated with our nature and heritage assets.**

**Plan for more homes in and around the city and close to key amenities.**

**Diversify housing types to cater to a wider variety of households.**

2

## Inclusive and Close-Knit Towns



Our towns will help build a sense of belonging among residents and foster vibrant communities. We will:

**Work towards a better mix of private and public housing to allow more interactions among residents from all walks of life.**

**Plan for towns that support residents' health and well-being across different life stages.**

**Develop more walkable streets and community spaces to encourage social interactions and bonding.**

3

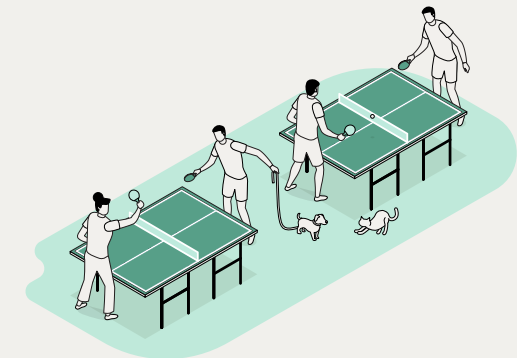
## Future-Ready Towns



As the lifestyles of residents evolve, towns — both existing and upcoming ones — must adapt too. We will:

**Provide more adaptable and flexible spaces to meet new or unexpected needs.**

**Rejuvenate ageing towns to ensure they continue to serve both present and future generations of residents.**



# Work

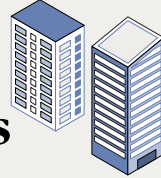
ANYWHERE AND EVERYWHERE

As the global economy changes in new and unexpected ways, Singapore must adapt and offer attractive economic spaces for businesses to ensure quality jobs for our people. Traditional workspaces and jobs are evolving with changing needs such as new business models and more flexible working arrangements. Working will no longer be confined to just the office and in future, not even the factory.



1

## Attractive Job Nodes



Our economy will sustain and support a diversity of jobs and workplaces for all. We will:

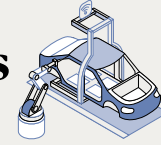
**Continue to enhance the attractiveness of our city centre as a global business hub while we transform it into a more mixed-use and vibrant precinct, by introducing a wider range of amenities, recreational and lifestyle offerings, as well as more residential options.**

**Introduce more job nodes outside the city centre to create vibrant workspaces nearer to homes.**

**Develop bustling economic ecosystems by bringing together businesses, research and other related activities and infrastructure to create greater synergies.**

2

## Flexible Spaces for Innovation and New Needs



Our workspaces must remain adaptable for Singapore to maintain its competitive edge. We will:

**Explore suitable locations for Business-White zones to provide industries with greater flexibility to test new concepts with new use mixes, at the same location.**

**Create Enterprise Districts that offer flexibility in planning for different uses across a wider district, beyond individual buildings.**

**Offer shorter lease tenures for some sites in selected areas to pilot new uses, support the fast-changing needs of the economy and facilitate rejuvenation.**

3

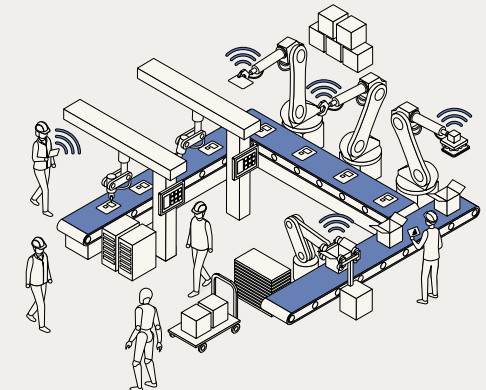
## A Future-Ready Economy



As business models, technological trends and the aspirations of our workforce evolve, so must our workspaces. We will:

**Provide diverse jobs and workspaces by adapting to higher-value industries and new trends.**

**Optimise land for workspaces to give ourselves more room for emerging sectors.**



# Play

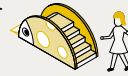
HEALTHY AND HAPPY

Play spaces are where we build community, strengthen relationships and find moments of delight in our daily life in the city. Leisure and recreational spaces liven up our urban environment, keep us active and improve our lives. By diversifying our play offerings and making them accessible to more people, we ensure Singapore continues to be an attractive and liveable city for us and visitors from around the world.



1

## More Recreation Closer to Homes



A well-connected network of recreational facilities in our towns ensures we all can relax and unwind daily. We will:

**Support the integration of a variety of recreational facilities at one place to increase options and optimise land use.**

**Co-create play spaces with residents.**

**Introduce different types of green spaces to bring respite to urban living and foster community bonding.**

2

## An Island of Green, Blue and Fun



Our rich variety of green and blue spaces can be enjoyed and appreciated by more people. We will:

**Expand our Nature-Based Recreation Network and activate our reservoirs and waterways to offer more leisure and recreational options.**

**Embrace our islandness and explore opportunities for more recreational activities at our coasts and offshore islands.**



3

## A Playful City for All



Tourism strengthens Singapore's position as a vibrant city globally, enriches local experiences and reinforces our national story. We will:

**Welcome fresh and exciting attractions to ensure Singapore remains a destination of choice for many.**

**Facilitate the transformation of existing attractions and spaces to provide novel leisure and lifestyle experiences.**

**Provide opportunities for people to create moments of fun and delight in public spaces all around the city.**

# Move

EFFICIENT AND CONNECTED

The way people and goods move in cities and how we connect with the world will transform with new mobility technologies and innovations. Our continued focus is on making movement within our city convenient, strengthening our mobility networks and shifting towards more sustainable and efficient modes of travel to foster faster and easier connections within our city and with the world.



1

## A Comprehensive Mobility Network



Getting around Singapore will become more convenient and sustainable. We will:

**Prioritise public transport and active mobility options.**

**Transform roads to make walking, cycling and commuting on public transport more attractive.**

**Leverage new technologies that could improve the way we move.**

2

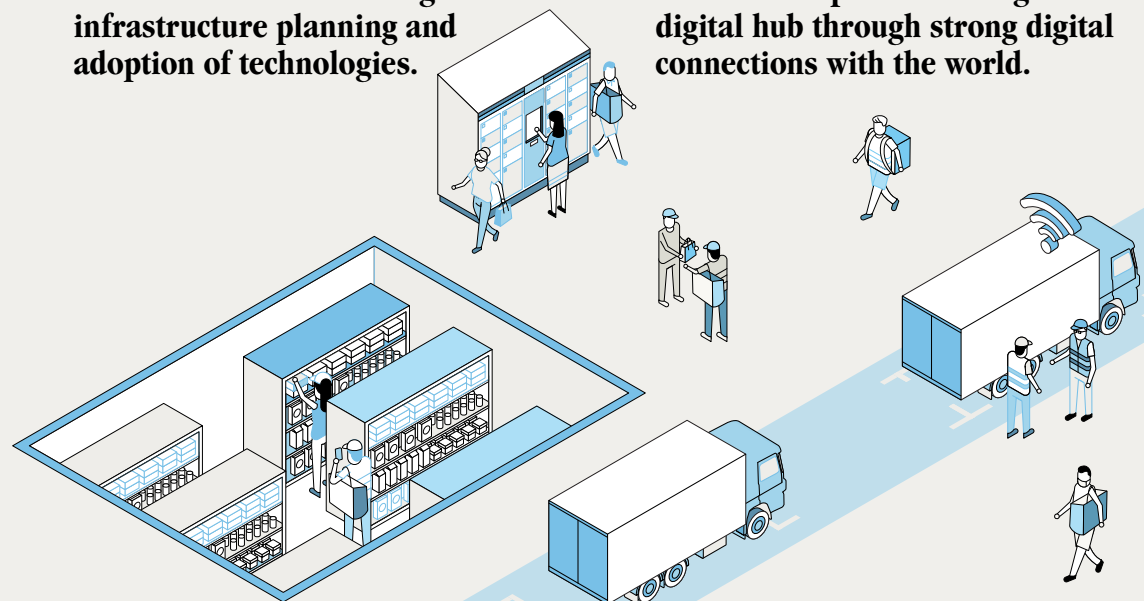
## Better and More Efficient Delivery



Our towns must be designed to support the increasing volume of goods deliveries from e-commerce. We will:

**Support logistics operations so that more deliveries can be fulfilled with fewer resources.**

**Improve the efficiency of last-mile deliveries through infrastructure planning and adoption of technologies.**



3

## A Well-Connected Global Hub



As a small country with an open economy, connectivity to the rest of the world has been core to Singapore's competitiveness. We will:

**Enhance our air, maritime and logistics connections with new infrastructure and better integration with industries.**

**Advance our position as a global digital hub through strong digital connections with the world.**

# Cherish

DISTINCTIVE AND LOVEABLE

As our city matures, it should continue to be one that present and future generations are proud to call home. Familiar places, distinctive buildings and our built heritage anchor our sense of belonging and make the city unique. We will work together to keep Singapore inclusive and engaging so that it remains a great place to chase our dreams and grow old in.



## 1 A Loveable City for All

Our heritage and identity will be kept alive for current and future generations to cherish even as the city develops. We will:

**Retain familiar places as we develop, through identifying, protecting and sustaining our heritage assets, as well as exploring ways to enhance the character and identity of places.**

**Blend the new and old, through sensitive integration and adaptive reuse of our built heritage to make Singapore an endearing city for all.**

**Celebrate and sustain both the tangible and intangible aspects of heritage and foster the sharing of memories and stories that give our spaces meaning.**

## 2 Distinctive and Endearing Spaces

Our favourite places in the city are often the result of considered and concerted efforts in urban design and architecture. We will:

**Create memorable places and distinctive buildings through sensitive urban design and innovative architecture to build a sense of belonging.**

**Open up more spaces for people to gather, interact, or just relax and enjoy the city.**

## 3 Places for the Community

Fostering a sense of belonging is important to establish the identity of a place and enhance its value. We will:

**Co-create places from the ground up with local communities to instil a greater sense of ownership and create more lively places.**

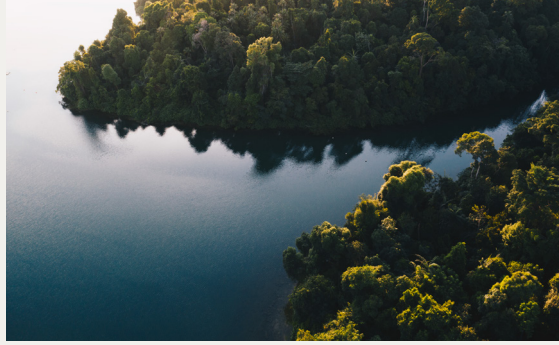
**Engage the public so that more people can participate in telling the stories of our built heritage.**



# Steward

THE GREEN AND BLUE

Nature plays a key role in a liveable and resilient city, especially against the impact of urbanisation and climate change. Green and blue spaces support natural ecosystems and also benefit our health and well-being. We will continue to work with communities to transform Singapore into a City in Nature.



1



## Stewardship of Natural Capital

Our green and blue spaces will be better integrated within our urban fabric, guided by a science-based approach.

We have developed ecological profiling tools and carried out an Ecological Profiling Exercise (EPE) to integrate nature into our long-term plans.

We will extend our natural capital with Nature Park Networks and Nature Corridors to ensure long-term ecological resilience.

2



## Multi-Functional Green and Blue Spaces

By integrating our green and blue spaces with our urban environment, we can enhance ecological connectivity, improve liveability, and meet social and recreational needs. We will:

Create spaces that support our natural habitats and serve as leisure spaces.

Restore nature into our urban landscape to improve liveability, mitigate urban heat and provide alternative habitats for biodiversity.

Balance development needs with nature conservation by studying how we can develop more sensitively.

3

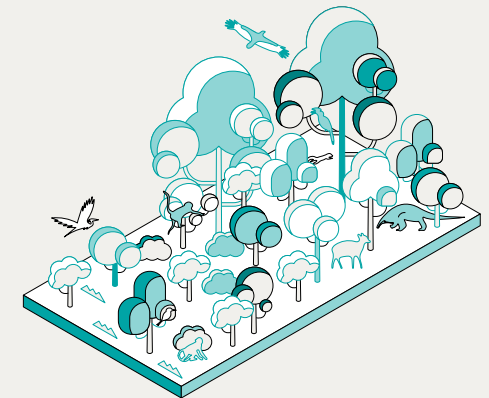


## Climate Resilience Through Nature

Green and blue spaces can mitigate the impact of climate change while providing recreational and ecological benefits. We will:

Intensify greenery in built-up areas to reduce surface and ambient temperatures.

Combine engineering solutions with natural elements where appropriate, to improve our climate resilience while enhancing biodiversity.





# Sustain

LOW CARBON AND RESILIENT

We have developed Singapore sustainably by holistically balancing economic, social, and environmental considerations, and factoring in our limited land and sea space. Ensuring our long-term sustainability is even more important with climate change and resource scarcity. All of us must play our part to ensure we can meet present needs without compromising that of future generations.



1

## A Low-Carbon City



Singapore will achieve net-zero emissions by or around mid-century. We will:

**Decarbonise and diversify our energy supply so that the city is powered through cleaner energy and smarter grids.**

**Move towards a regenerative built environment that minimises damage to the environment and even heals and revitalises it.**

**Close our resource loops by recovering and reusing as much as possible, which also reduces the waste we generate.**

2

## More Climate-Resilient Infrastructure



Our city can be better protected from the effects and impact of climate change. We will:

**Enhance flood resilience with new infrastructure that is also multifunctional, to optimise land.**

**Cool down urban heat through planning, and design buildings and environments that support better thermal comfort.**

3

## Systems-Level Planning Approach



Closing resource loops can reduce wastage while increasing efficiency, cost savings and environmental gains. We will:

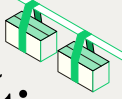
**Co-locate infrastructure by integrating different parts of the urban system to stretch the use of our precious resources.**

**Support circular economies by strategically siting industries to close resource loops in the production process.**

**Develop new districts sustainably from the start, as seen in the upcoming Jurong Lake District.**

4

## Land and Space Options



We constantly find ways to optimise our land and space options to ensure future generations will not run out of space. We will:

**Optimise sea space, in a manner sensitive to the marine environment, by co-locating uses and harnessing technology.**

**Look beyond traditional methods of land reclamation by exploring creative and innovative solutions for land creation.**

**Unlock our underground space by exploring feasibility of creating more cavern spaces.**

# Paya Lebar Air Base

THE NEXT FLIGHT

From the 2030s, Paya Lebar Air Base (PLAB) will be relocated to make way for a new generation town in the east of Singapore. URA invited the Singapore Institute of Architects (SIA) and Singapore Institute of Planners (SIP) to come up with initial concept ideas for the redevelopment of PLAB as a Community of the Future. Useful ideas will be studied in greater detail to see if they can be incorporated into the future Master Plan for PLAB.



1

## Innovative and Active Community; Diverse and Creative Jobs and Spaces

Building upon our existing polycentric model, PLAB will become a distinctive job node to bring employment closer to homes. In particular, PLAB could be planned to:

**Provide direct links, connect and improve travel times between surrounding communities and neighbouring towns through PLAB.**

**Ensure ease and efficient movement via a people-centric mobility network and use of shared spaces that contribute to well-being and high quality of life.**

**Enable smart, flexible and diverse workspaces by integrating live-work areas creatively that offer greater flexibility and variety.**

2

## Neighbourly and Distinctive Community; Liveable and Inclusive Environment

PLAB will help Singapore meet its future housing demand, create districts with differentiated characters and distinct identities, and can contribute to a stronger sense of ownership and belonging among its inhabitants too. We will:

**Develop distinctive districts anchored on PLAB's heritage and unique site features.**

**Create self-contained and community-centric neighbourhoods that fosters and strengthens social bonds and resilience.**

**Plan for flexible spaces that can be adapted to changing needs over time.**

3

## Sustainable and Playful Community; Green and Blue Heart of the East

PLAB will be developed to address the growing challenges of climate change and resource scarcity. We will explore:

**Stitching the town and surrounding areas together with a green and blue network to support biodiversity, recreation and climate resilience.**

**Employ circular economy and closed loop systems, and power the town sustainably with half or more of its energy needs coming from renewable sources.**