

*1<sup>st</sup> Prize*

# Kaleidoscope Boh Beh Kang

## **Team members**

Architect: Designshop Pte Ltd

Architect: HKS Asia Pacific Design Consulting

Civil & Structural Engineer: TTW Engineers Singapore

Mechanical & Electrical Engineer: DN+O Engineers Pte Ltd

Quantity Surveyor: DLS Consultancy Pte Ltd

## **Description**

Designed as a kaleidoscopic tunnel, the node immerses visitors in a bygone era of rustic charm, when lush greenery and the hum of the railway are woven into daily life.

The slopes along the Rail Corridor trail are lined with heritage exhibits inspired by the authentic structures of the original village – Boh Beh Kang, guiding visitors through the different eras of Queenstown’s development. With wall panels introduced at various angles, the projections on the walls come alive along with artefacts, photographs and stories that capture the history of the former kampong. Further along the trail, the dynamic exhibits transition into a calm and quiet zone for reflection.

A side path from the Rail Corridor trail opens into a secret underground garden, serving as a place for the community to gather. A central plaza space can be used for events and daily activities, such as a theatre for performances and modular kiosks that can be reconfigured to serve a range of activity needs. In the open space, visitors can meander through neat rows of trees, reminiscent of rubber plantations, and illuminated by firefly lights

## **Jury’s Comments**

The jury commended the proposal for its balanced design approach which celebrates the heritage and history of Queenstown, while transforming the node into a unique community space without requiring extensive regrading of the challenging terrain beneath the viaduct.

The proposal also presents a strong opportunity to involve the wider community in shaping the design and content of the wall panels, taking into consideration the need for sustainability and to minimise maintenance costs. The jury picked out the idea for a differentiated experience along the Rail Corridor trail with potential to introduce soundscapes and projected visual arts on the walls. This can be complemented by adding stepped seating and play along the slopes.

While the landscaping within the secret garden will need to be considered with regards to its feasibility given the low lighting conditions, the jury noted that the space can be re-purposed, allowing flexibility in the use of the space.

The jury also appreciated the treatment of the open space outside the viaduct, which pays homage to Queenstown's plantation history, and the unique experience it offers to visitors entering the node from the surrounding residential areas. Overall, the proposal is forward-thinking, while blending the past with the present and surrounded by greenery and nature.

# KALEIDOSCOPE BO BEH KANG

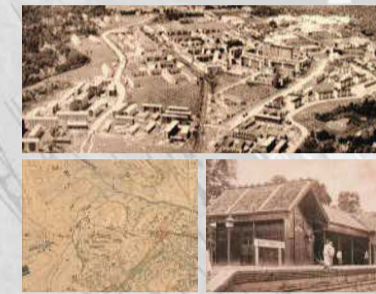
Inspired by the original masterplan concept of "The Passage of Light", "Kaleidoscope Bo Beh Kang" weaves in the spirit and memories of Queenstown as a kampong known as Bo Beh Kang. The Kaleidoscope immerses visitors in a reimagining of rustic charm and simpler times, when lush greenery and the hum of the railway were integral to daily life.

Approaching the Kaleidoscope, greenery morphs into a plantation with an old river running along. Inside, light projections interact with the existing linear ceiling lights and exhibit panels, creating an enchanting experience. The tunnel's walls come alive with stories, narrating the history of the kampong, the lives of its people, and sounds of the tracks.

A path brings visitors to a chamber where community members gather to reflect on a past that feels both distant and familiar. Traditional kampong life is referenced amid a secret tropical garden, sustained by solar tube installations, creating a sense of discovery of buried nostalgia below the viaduct.

Kaleidoscope Bo Beh Kang pays homage to a way of life, memories that shaped the identity of Queenstown. It encourages visitors to remember and rekindle a communal spirit, appreciating the natural and cultural heritage at the heart of this village.

## CHAPTERS: THE BO BEH KANG STORY



### I: HUMBLE BEGINNINGS The story of Boh Beh Kang (No Tail River)

The roots of Queenstown lie in the town that was named after Boh Beh Kang - No Tail River. Incorporating a plantation in the open space, it showcases the rustic and idyllic landscapes of the kampong village.



### II: A CHILDHOOD TO REMEMBER Fond memories of growing up along the railway

A space to reminisce and learn about the past, this space is dedicated to the seniors who grew up in the neighborhood. Traditional games are showcased along the wall exhibits, stories from residents who grew up in the area are narrated and a learning space is provided.



### III: THE QUEENS' TOWN The story of urban development in the 20th Century

Showing the rapid urbanization of the first satellite town in Singapore. Through projections and audio-visual exhibits, it acts as an archive of the notable buildings and initiatives that have since been removed to make way for current urban infrastructure.



### IV: THE FORGOTTEN RIVER The return of the river that has become Alexandra Canal

A lush wetlands area with a bioswale and rain chains to control the flow of water in wet weather reference the No Tail River which has since been canalized. It further engages visitors in nature along the rail corridor.



### IV: THE FIREFLIES TRAIL A nostalgic experience in nature

Further engaging in simple joys found in nature, light features that simulate fireflies which are rare in the current urban environment are brought back along The Forgotten River along with a metal mesh deck leading up to The Kampong.



### V: THE KAMPONG Bringing the community together for shared experiences

Inspired by activities in kampongs like opera shows and markets, the kampong provides space for the public to gather. Complete with rustic elements in furniture and kiosks, The Kampong is for the community to bond beneath the developed infrastructure of the city.



### VI: THE SECRET GARDEN Embodiment of the kampong spirit in informal spaces

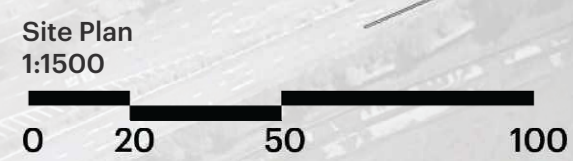
An underground garden with solar tubes, it references the significance of green spaces in kampongs for interactions and bonding. It provides extended space for more intimate gatherings and a green centerpiece for visitors to meander through.



### Legend

1. Rubber Plantation
2. Fireflies Trail
3. Raingarden/ Wetland
4. Kampong Theatre
5. Kampong Plaza
6. The Secret Garden
7. Public Toilet
8. Bicycle Parking
9. Integrated Terraced Ramp
10. Play Area
11. Outdoor Classroom
12. Exhibition Gallery

1:1500 Scale



### THE KAMPONG SPIRIT LIVES ON

The kampong area on the elevated earth mound emulates the kampong spirit with spaces for the community, with a rustic yet modern charm, it is a space for events and daily activities. It takes reference from features of kampong villages with a theatre space for performances and a central plaza for makers' markets with modular kiosks.

A side path from the tunnel leads to the inner portion of the kampong with a secret garden. Draped in tropical foliage sustained by solar tube installations, the gardens are reminiscent of the village's backyard alive with activity.



### A JOURNEY THROUGH THE PAST

The tunnel-like path brings visitors through the different eras of Queenstown from its beginnings as Boh Beh Kang village. Lined with wall panels of different angles, a mixture of light projections and audio-visual exhibits bring the stories of the past to life.

In addition, along the integrated step-ramp, an outdoor classroom is completed with a large projector screen for groups to learn about the town. In the middle, darkest portion of the tunnel, the dynamic exhibits slow down to provide a calm and quiet zone for those who want to enjoy the peace of space.

# KALEIDOSCOPE BO BEH KANG

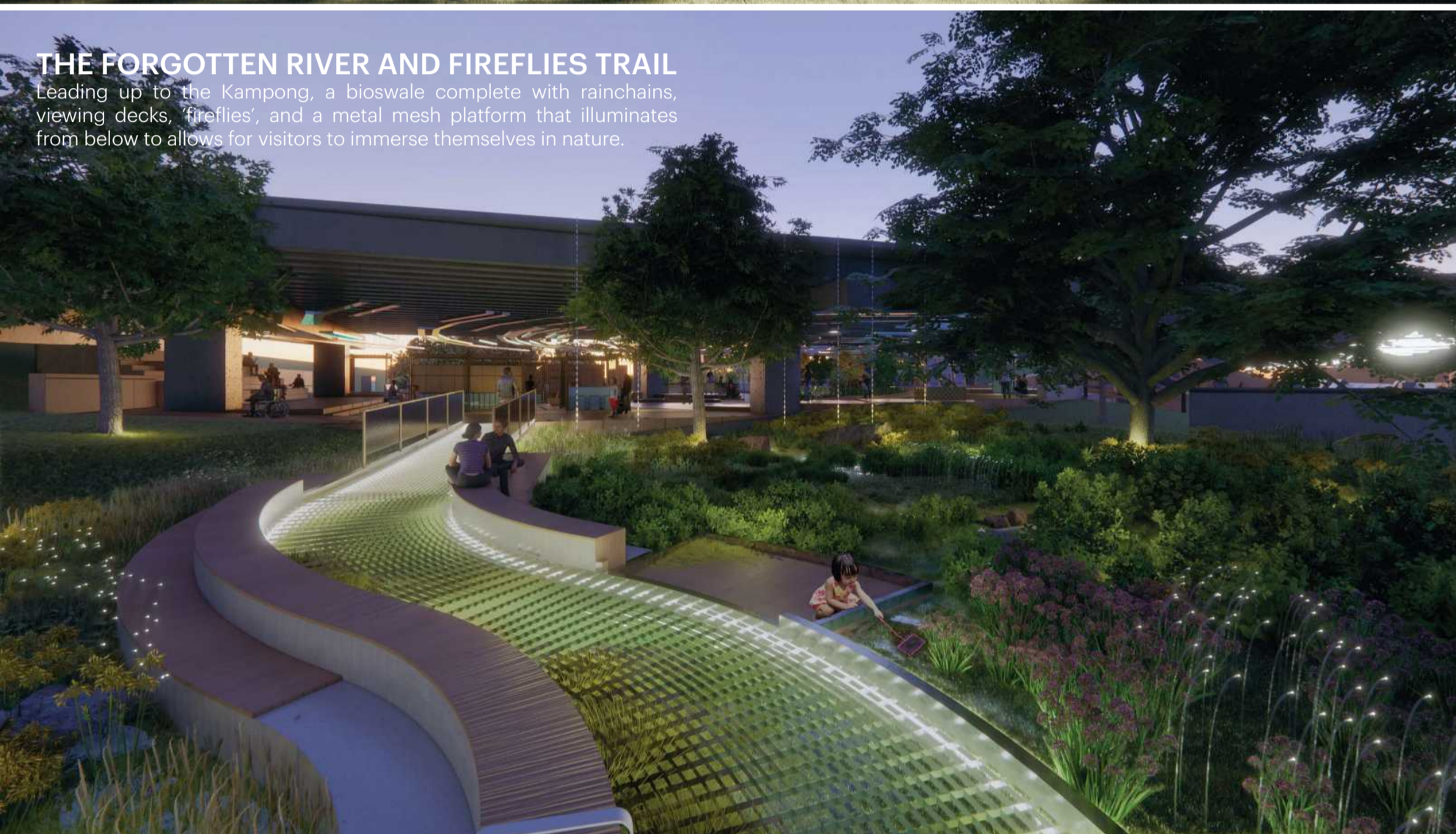
## THE PICTURESQUE PLANTATION

A beautiful homage to the past, featuring an enchanting arrangement of evenly spaced rubber trees, reminiscent of the lush plantations that once thrived across the Queenstown region. The towering rubber trees, with their broad canopies and distinct bark, create a tranquil canopy that filters sunlight, casting dappled shadows on the ground below.



## THE FORGOTTEN RIVER AND FIREFLIES TRAIL

Leading up to the Kampong, a bioswale complete with rainchains, viewing decks, fireflies, and a metal mesh platform that illuminates from below to allow for visitors to immerse themselves in nature.



Conceptual Sketch of Bioswale and Viewing Deck at The Forgotten River



Public Toilet and Bicycle Parking



Integrated Terraced Ramp



Kaleidoscope Fractal Projections

## KEY FEATURES



Solar Tube

A sustainable feature requiring **no power provision and little maintenance**. Solar Tubes receive sunlight at the side of the viaduct and bring in natural light to the space below.



Solar Tube+UV Light

An array of UV growth lights at the ceiling to supplement plant health on overcast days, and general lighting provision only at night.



Metal Mesh Corridor

Metal mesh allows plants to grow through, creating a rustic, naturalistic experience.



Rain Chain

Rain chains channel water to the bioswales and rain gardens, part of public learning of the water story

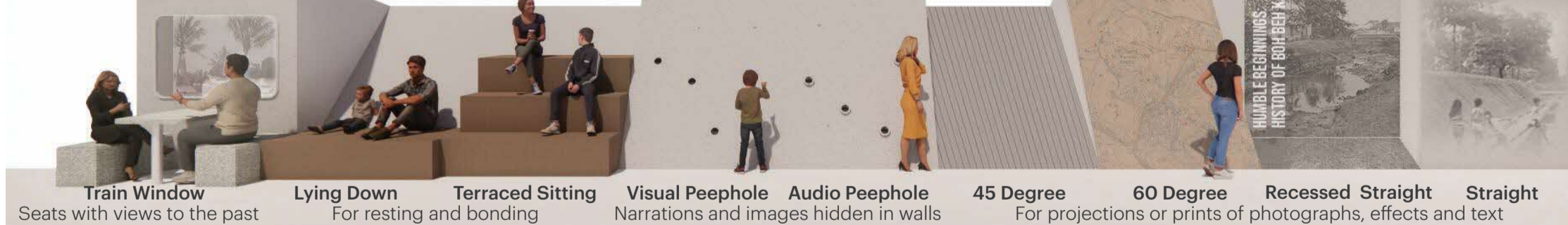


Fireflies

Fireflies lighting connected to sensors create a magical experience, augmented by environmental sounds



## KALEIDOSCOPE GALLERY STRATEGY



## SOFTSCAPE PALETTE

Selection of planting palette is taken from native and historical wetland species



Heteropanax Fragrans



Ficus Lyrata



Licuala Grandis



Asplenium Nidus



Barringtonia Racemosa



Pouteria Obovata



Hevea Brasiliensis

## THE SECRET GARDEN

A central garden space represents the informal gathering spaces outside and in the backyard of kampong houses. Visitors can meander through the shrubbery or enjoy more intimate gathering spaces around the garden.



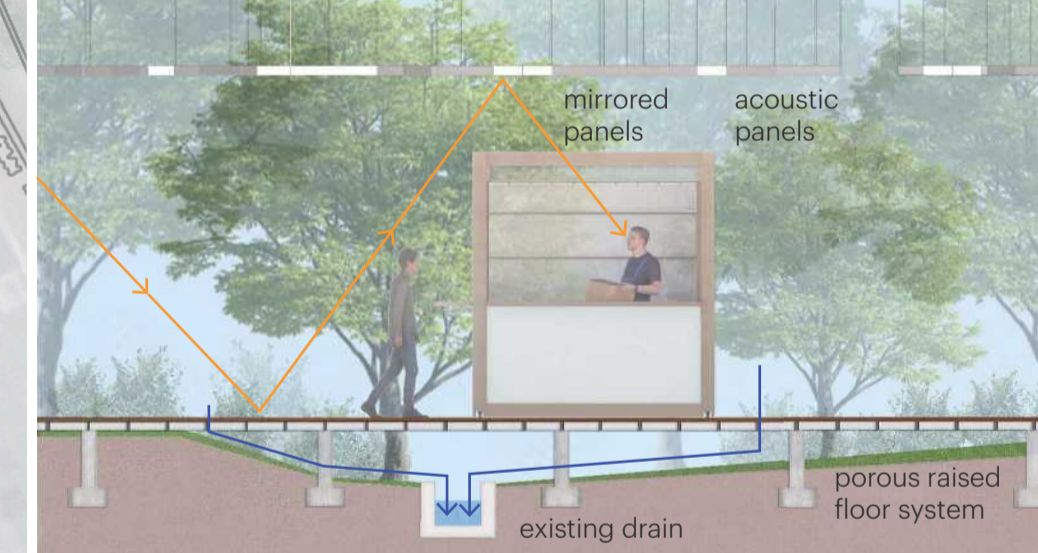
## THE KAMPONG: THEATRE AND PLAZA

The theatre and plaza is a large area that is suitable for a variety of community events such as music performances, makers' markets, exercise sessions, community library, etc. It is composed of an open plaza space on an elevated timber deck platform with modular kiosks, a stage, and terraced seating.



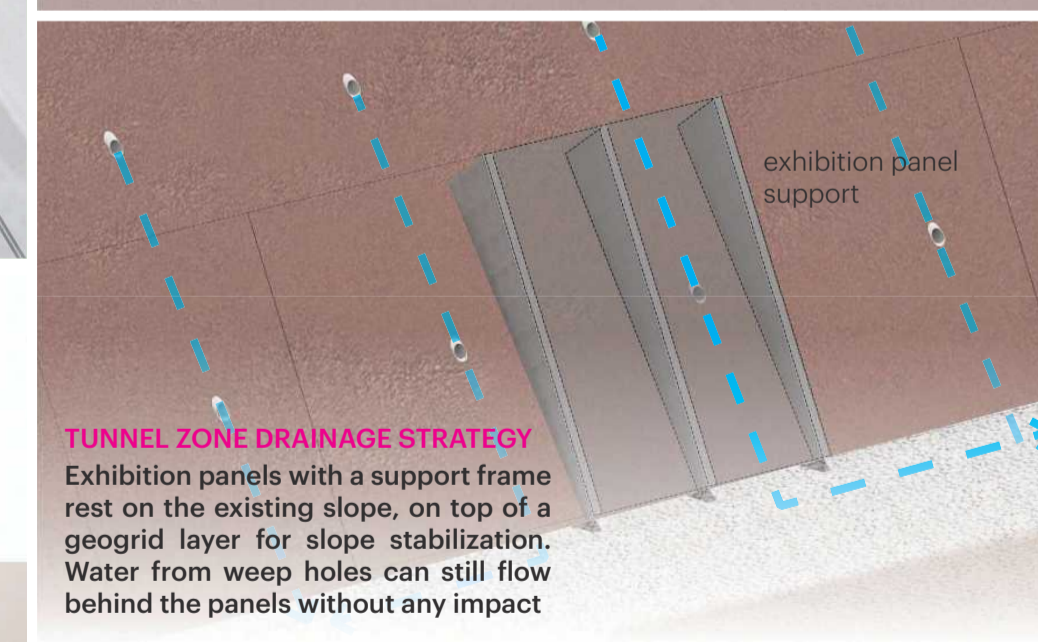
## ACOUSTIC STRATEGY

Acoustic panels create a 1.5 second reverberation time suitable for light acoustical music such as busking activities. Mirrored panels increase sense of space and help diffuse light. Instead of entirely covering the extensive ceiling, these panels are spaced apart.



## KAMPONG ZONE DRAINAGE STRATEGY

It was observed that there is high risk of water ingress from existing slopes at the sides. A raised floor system eliminates any complications and costly infrastructure of changing the existing hydrology.



## TUNNEL ZONE DRAINAGE STRATEGY

Exhibition panels with a support frame rest on the existing slope, on top of a geogrid layer for slope stabilization. Water from weep holes can still flow behind the panels without any impact

## FLEXIBLE COMMUNAL SPACES

Modular Kampong units with concealed wheels for easy movement and locks for stability. They can be combined and reconfigured to suit different event needs.

