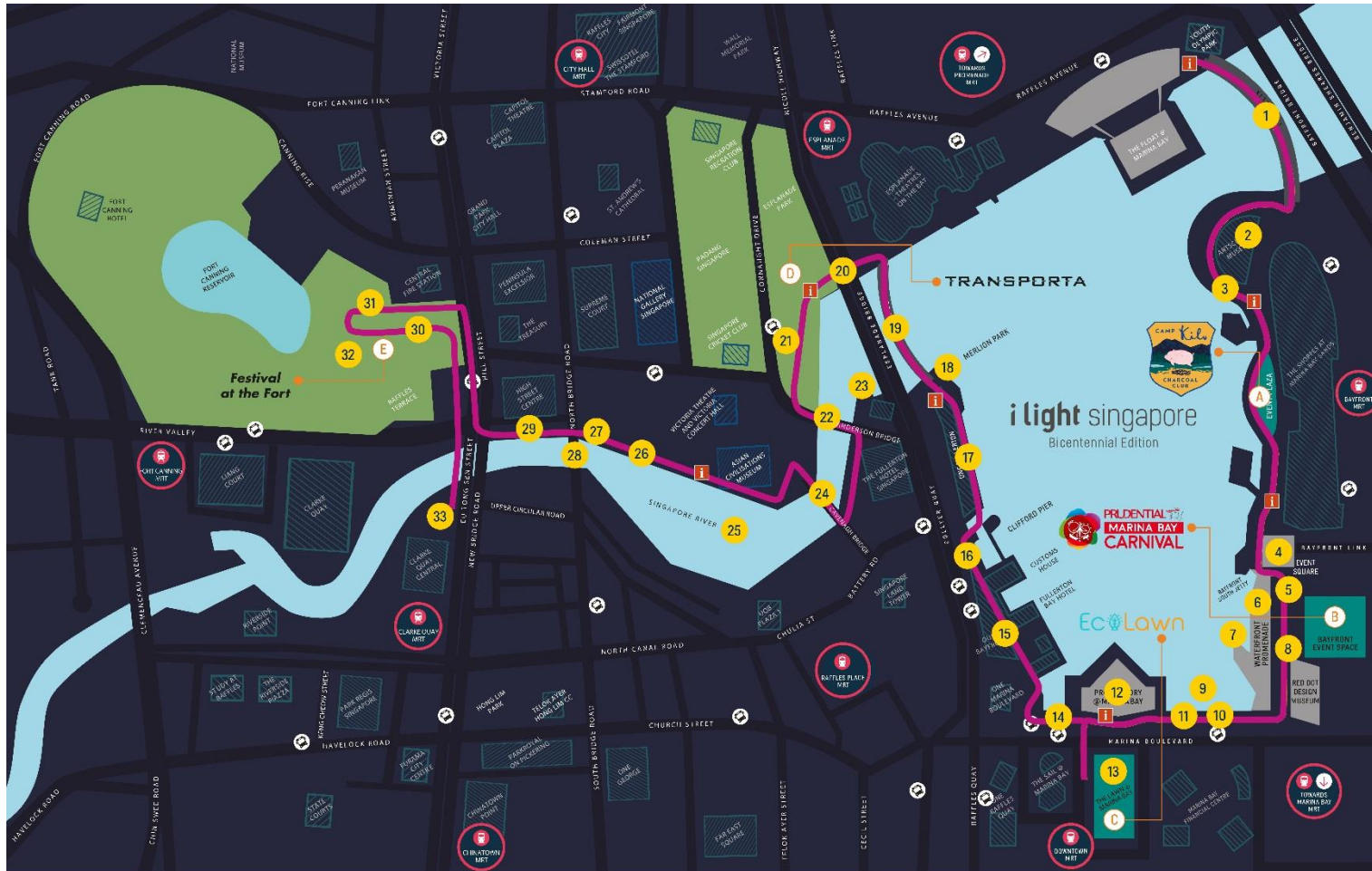


MAP OF *i* LIGHT SINGAPORE - BICENTENNIAL EDITION ARTWORKS



**ARTWORKS FOR *i LIGHT SINGAPORE - BICENTENNIAL EDITION***

**i Light Student Award**



***Cenotaph for a Stone***

by Bryan Joseph Cadag, Loo Quan Le, Zulkarnain Bin Mohd Zin from National University of Singapore (Singapore)

Location: Waterboat House Garden **23**

*1<sup>st</sup> Prize of i Light Student Award*

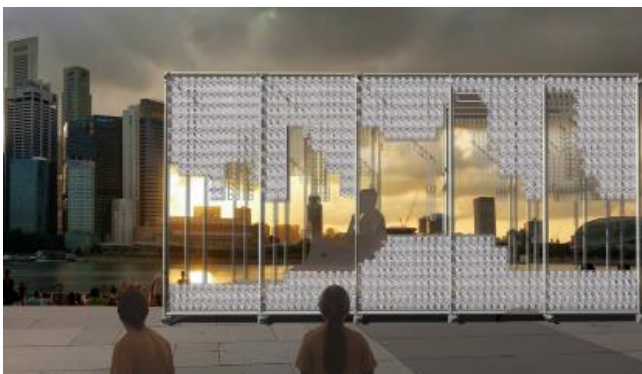
***Cenotaph for a Stone*** serves as a reinterpretation of the Singapore Stone as what it was, what it is and what it could have been. Taking cues from the

stone's decimation in 1843, the installation seeks to monumentalise the event that forever perpetuated its mysticism; as well as set a factual context to the stone, misconstrued by the fictionalised 'Badang' folklore.

The installation comprises 51 'rock fragments' on steel pedestals, with the 52nd pedestal being empty, hinting the only piece with its whereabouts known, currently residing in the National Museum of Singapore. The stone fragments are placed in an orchestrated fashion that recreates what the stone could likely be shaped like, based on dimensional records by Munshi Abdullah. This faux stone can be seen as a full piece when viewed from the front of the installation. However, this shifts to a time-warped explosion as the visitor walks around its perimeter.

**About the artists**

After graduating with a Diploma in Architecture (2015) from Singapore Polytechnic, **Bryan Cadag, Loo Quan Le** and **Zulkarnain Bin Mohd Zin** are currently pursuing a BA(Hons) in Architecture at the National University of Singapore. Frequently working within the confines of theoretical projects in an academic setting, this installation marks the first physical product of their collaboration together.



***Prospective Perspective***

by Carnation Kng Ni Xin, Low Jo Ann and Justina Teng Yimin from National University of Singapore (Singapore)

Location: Marina Bay lower boardwalk **6**

*2<sup>nd</sup> Prize of i Light Student Award*

**Prospective Perspective** is an installation that explores the expressive potential of everyday objects. Ubiquitous across all residences in Singapore, the humble clothing peg is easily recognisable to most Singaporeans. The sight of pegged laundry on bamboo poles, dancing with the breeze at HDB flats – the team is fascinated by how such a simple object could bring across so much local flavour. Adopting the clothing peg as their building module, they hope that their installation brings joy to those who can see the peg in a new light. Further inspired by stories of Singaporeans through the ages building the city, each single peg is replicated and connected to form layers, creating an impression of Singapore's signature skyline. With the installation facing the city skyline across Marina Bay, acting as a projection of future buildings, the installation extends the existing skyline, serving as an imaginative bridge to the future.

### About the artists

**Carnation Kng, Low Jo Ann** and **Justina Teng** are currently pursuing their Architecture degree at the National University of Singapore.

---



### **Flower Clock**

by You Fan Zhou, Liao Qing Shuang, Guo Qian Ling, Song Le Jing and Lee Jian Wen from Guangzhou Academy of Fine Arts (China)

Location: One Fullerton **17**

*3<sup>rd</sup> Prize of i Light Student Award*

Inspired by the relationship between blooming flowers and time, this delightful artwork rotates to simulate the movement of a clock. **Flower Clock** celebrates Singapore as a Garden City while the rotating flowers represent the process of time blossoming as a tangible nature.

### About the artists

The digital media art design research team of Guangzhou Academy of Fine Arts finds their passion in cross-media art design. Led by **You Fan Zhou**, its team members consist of **Liao Qing Shuang** (Chief Engineer), **Guo Qian Ling**, **Song Le Jing** (visual designers) and **Lee Jian Wen** (programmer). Using digital media technology, multiple spatial modeling and multi-dimensional form of art language, the team had created a series of forward-looking work of art and had also designed other landscapes. The team had participated in other exhibitions such as Guangzhou International Lighting Festival (2017, 2018) and Asia Society of Basic Design and Art Exhibition. The team constantly develops the art in the new media in order to meet the challenges of the world.



## **Constructive Interference**

by InPhase from Singapore University of Technology and Design (Singapore)

Location: North Boat Quay **29**

*Merit Award of i Light Student Award*

*Co-created with Million Lighting*

**Constructive Interference** bridges people together through the use of light and matter. Moments of unpredictability

in human interactions are captured on both ends of the artwork, manifesting itself into a unique and dynamic array of colours that converges towards the middle in a wavelike form. Its unique manipulation of light translates the imperceptible kinetic energy of its users into a physical form, one that amplifies or diminishes depending on the input of its users. This dynamic artwork and its ever-changing form are representations of Singapore's bustling cityscape.

## **About the artists**

**Michelle Gouw, Nur Fadilah Binte Nordin, Ian Soon Wen, Tan Zhi Wei and Hendriko Teguh** are a team of Singapore University of Technology and Design students with various backgrounds in architecture and programming.

.....



## **Cosmic Web**

by Foo Hui Wen, Lim Yu Zhi, R.Yashini from LASALLE College of the Arts (Singapore)

Location: Breeze Shelter **11**

*Merit Award of i Light Student Award*

**Cosmic Web** is an interactive light installation inspired by the wolf spider's web, which resembles a tunnel. This

converging tunnel-like structure aims to highlight the resilience and self-determination of a communal living entity through hardship by creating a safe haven. At the same time, it also acts as a metaphor for a wormhole, which is associated with the transition and fluctuation of time.

This artwork seeks to create a moment of isolation in a communal space, inducing curiosity towards the materials used in this installation. The materials draw parallel to the strength of a spider's web, which increases rather than weakens when a single strand breaks. Much like Singapore's long-standing multicultural environment and mindset of unity, this installation hopes to celebrate the centuries of connectivity in Singapore through the ravages of time.

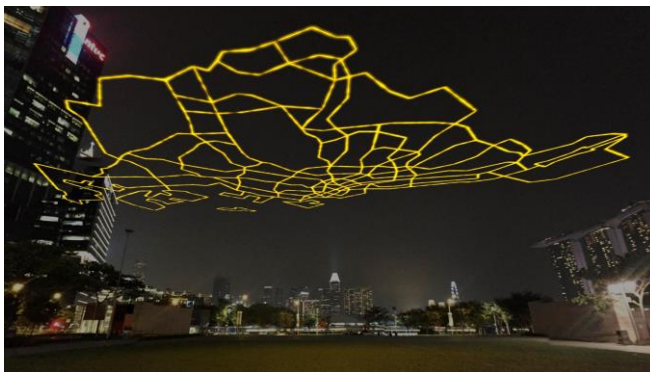
**About the artists**

**Foo Hui Wen** is a multidisciplinary artist whose interest is guided by a curiosity towards the idea of adaptability as well as the symbiotic relationship we have with nature. Her practice explores the notion of naturalization and displacement, translating them to visual narratives, which may inform or reflect on our ecology.

**Lim Yu Zhi** is a multidisciplinary artist who is interested in conceptual art with practicing mediums of multimedia installations and video works. Her exploration deals with the notion of being and transcendence in universal identity and individuality.

**R.Yashini** is a multidisciplinary artist. Taking the position of an explorer with an experimental curiosity, her practice explores the realms of modern cosmology. Through inventive methodologies in materiality, she aims to imaginatively bridge the gap between the observer and grand realities of the distant cosmos by constructing experiential spaces.

**Artworks by Singapore and international artists**



***City Gazing Singapore***

by VOUW - Mingus Vogel and Justus Bruns (The Netherlands)

Location: The Lawn @ Marina Bay **13**

***City Gazing Singapore*** shows the city of Singapore as if you would fly over it by night, with all street lights, homes and roads lit up. With a special animation, the work lets visitors time travel over the past

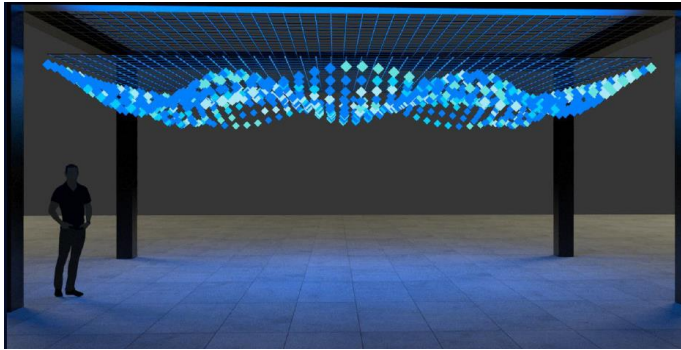
100 years, seeing how Singapore grew from a couple of key arterial roads into the international hub it is today.

Suspended over The Lawn @ Marina Bay, the city is turned upside down before the starry sky. In many ways, the moment of experiencing ***City Gazing Singapore*** feels both grand and humble. As the artist adopts the ‘overview effect’, there is a mental shift in awareness of how fragile life on earth is by exposing oneself to the vastness of the world. As the anchor piece of i Light Singapore’s sustainability hub, the work invites visitors to think more about the future of the city from a humble and sustainable perspective.

**About the artist**

**VOUW** is a design studio from Amsterdam with a high interest in the future. VOUW creates and designs work to help people and organisations adapt to change and become future proof. VOUW is founded by Justus Bruns and Mingus Vogel, and consists of engineers, programmers, designers and artists.

.....



## **Crystallisation of Thoughts** by Living Spirits (Thailand)

Location: Clarke Quay Central **33**

Inspired by Singapore's strategic location as a maritime gateway, ***Crystallisation of Thoughts*** visually imagines how ideas are generated and

then combined into congruent thoughts, in the form of interconnected waves of small crystals. It also models after the exchange of ideas among people through a classic game of *Pong*, where participants initiate the game using the control pads on-site, simulating the way people bounce ideas off one another.

### **About the artists**

Living Spirits is a collective, which listens, observes, questions, creates conversations and makes connection with people through the arts. They believe that everything in this world has two sides running in parallel. Their objective is to tell stories from the other side which cannot be seen from our eyes but with our hearts.

Through their artworks which are mostly inspired by social issues, they would like to invite everyone to participate and complete the message through interaction. Then, with the help of technology, they try to create the most meaningful interaction with the art piece. Their works combine people, technology and art.

.....



## **DUNE**

by Daan Roosegaarde (The Netherlands)

Location: OUE Bayfront **15**

***DUNE*** is the landscape of light, which interacts with human behaviour. The hybrid of nature and technology is composed of hundreds of fibers that brighten according to the motions and touch of passing visitors. Visitors

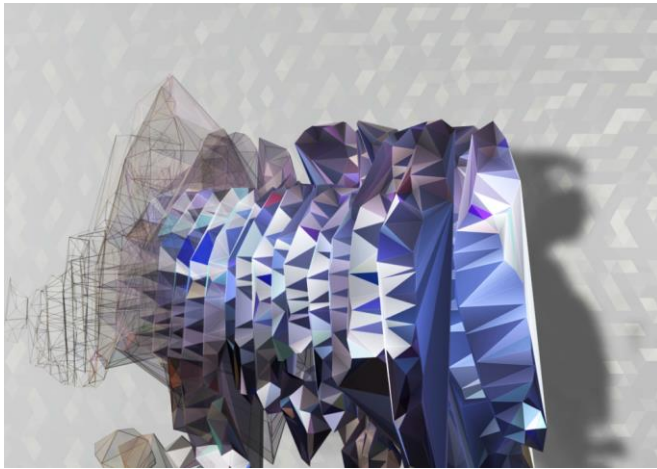
become a direct part of the artwork, enhancing social interactions between themselves and the landscape.

### **About the artist**

Award winning Dutch artist and innovator **Daan Roosegaarde** is a creative thinker and maker of social designs which explore the relation between people, technology and space.

Roosegaard has been driven by nature's gifts like light emitting fireflies and jellyfish since an early age. His fascination for nature and technology is reflected in his iconic works such as SMOG FREE PROJECT (the largest outdoor air purifier which turns smog into jewellery) and VAN GOGH PATH (bicycle path which glows at night).

Through lectures across the world Daan frequently shares his visionary ideas and projects. Daan Roosegaard has been selected by Forbes, WIRED and Good 100 as a creative change maker and a Young Global Leader at the World Economic Forum. He is also currently advisor for Design Singapore Council, ambassador of the Science Weekend and visiting professor at Tongji University in Shanghai.



### **Facey Thing**

by Uji Studios (New Zealand)

Location: Marina Bay waterfront promenade

*In collaboration with LUX Festival, Wellington, New Zealand* 5

**Facey Thing** is a fun and satirical celebration of the coming together of selfie culture and universal surveillance to create hyperreal simulated images of ourselves through the art of play.

As passers-by come into view of the camera, facial tracking will identify their face and blow it up onscreen as per spy TV shows. Then when individuals become engaged and move closer to the screen, they can interact creatively by virtually painting with their faces.

### **About the artist**

**Uji Studios** create interactive play-spaces for kids, made accessible to all communities. With their play-spaces, interactives and workshops they aim to give a wide range of access to design, technology and creative exposure through fun and playful experiences.



## **Good Fortune**

by Olga Grybowicz and Kasper Hein (Poland)

Location: Elgin Bridge Underpass **27**

*In collaboration with Bella Skyway Festival, Torun, Poland*

**Good Fortune** is a visualisation of rain inspired by emotions it causes in different cultures. For some, dark clouds before the impending rain is an alarm of storms and

floods, while for others, it is a 'sweet rain'; an omen of upcoming purification, nourishment and a state of meditation. In a city, rain is a troublesome companion to inconveniences in life, but in farmlands, the fall of the first raindrop is a moment of alleviation. This work is a compound of feelings caused by the phenomenon attempting to create a moment of reflection in our viewers.

## **About the artists**

**Olga Grybowicz** graduated from the Wojciech Kossak Secondary School of Fine Arts in Łomża, specialising in workshop graphics. Currently, she is studying at the Media Art and Visual Education in Toruń, where she implements various artistic and educational projects. An enthusiast of illustration and animation, she secretly connects her future to these practices. She is inspired by everyday situations and gives artistic form to prosaic activities and situations.

**Kasper Hein** is a media art and visual education student in Toruń exploring and enjoying practices in photography, poster and typography. Coming from a small village in the north of Poland where there is always a starry night, and the moon shines like nowhere else, he has always been disturbed by light. This is reflected in all of his works, especially in his photography. He tries to give all his works a modernist character and tries to solve each of the problems in a minimalistic way.

.....



## **HALO**

by Michael Davis (United Kingdom)

Location: Esplanade Park **21**

"If art is how we decorate space, music is how we decorate time." – Anon.

**HALO** is a new participatory sonic and visual kinetic environment from the makers of *Illumaphonium* from i Light Marina Bay 2018. 200 'halos', representing

Singapore's Bicentennial, are visually linked and arranged in vertical columns; each



representing the never-ending flow of the present moment. This work is semi-autonomous and creates evolving patterns of sound and light with interaction from the participants. By participating in music making, visitors create a link to the visitors of the past, present and the future.

## About the artist

**Michael Davis** is a designer and maker of outdoor large-scale and highly-responsive sonic and visual kinetic sculptures. He has also spent extensive amount of time living with traditional musicians in West Africa where he was introduced to many aspects of instrument making. His installation work uses all of these skills. In 2016, he began working with kinetic lighting as an integral part of his chime-based installations and developed *Illumaphonium*. This piece enjoyed massive success and he has to date produced 6 units which have been exhibited across two continents. His belief is that through design – physical, harmonic, rhythmic and in computer code, it is possible to create an enticing, engaging and creative environment where people naturally want to explore and express themselves. Through doing so, they find out a little more about themselves that was perhaps previously not made known. The interactive works he produces are a synthesis of these diverse skills and values.

.....



## **Keys of Light**

by Mr.Beam (The Netherlands)

Location: Raffles Terrace at Fort Canning Park **31**

*Presented by NParks*

**Keys of Light** is a modular interactive piano installation that encourages audience participation. By playing the piano, a musical algorithm reveals captivating graphic compositions inspired by Singapore's architectural

icons on the Lighthouse at Raffles Terrace, Fort Canning Park. With different notes being played on the piano, every player creates a unique visual outcome, leaving no performance the same. A small gesture of a single piano key results in a theatrical expression connecting music, animation and architecture.

## About the artist

**Mr.Beam** is a projection art studio based in the Netherlands. It comprises a team of creative experts and artists, devoted to design and develop light projection content and immersive installations. Their work results in unique, touching experiences that represent their love for projection mapping, storytelling, motion design and music composition. They have recently collaborated with la Fête des Lumières in Lyon.

.....



## **Land-pass Bird**

by Huang Chin-Fu (Taiwan)

Location: Raffles Terrace at Fort Canning Park **30**

*Presented by NParks*

**Land-pass Bird** is a mythical bird with its body azure in colour and its features glowing at night. It is said that very few people have seen these birds. During fall, they fly in flocks towards small and large islands and reefs situated near the

Straits of Singapore and hunt for a type of dinoflagellates known as “sea sparkle”. On a quiet dark night, their fluorescent blue feathers sparkle in the scattered moonlight as the birds perch on the trees of Raffles Terrace, overlooking the Singapore River.

## **About the artist**

**Dr. Huang Chin-Fu** has published many works and articles. Having graduated from the Department of Fine Arts, Tunghai University in 1992, Huang obtained his MFA from the same university in 2001 and later, continued his studies in Spain. In 2007, he received his Diploma of Profound Studies (DEA) with notable grades and acquired the status of Ph.D. Candidate. He eventually received his Ph.D. in Contemporary Art Studies with *apto cum laude* from Universidad de Castilla la Mancha, Spain. Huang was accepted by the 7th International Residency Program (2014) hosted by Shangyuan Art Museum in Beijing as well as the International Artist-in-Residency Program hosted by Inside-Out Art Museum in Beijing, China. His work, *City Story Series* was invited as part of the thematic section, "Representing Society" in Yes, Taiwan: 2014 Taiwan Biennial organized by National Taiwan Museum of Fine Arts.

---



## **Les Footballeurs**

by Rémi Brun (France)

Location: Lawn next to One Marina Boulevard **14**

**Les Footballeurs** captures the powerful movement of two football players; the attacker striking the ball and the goalkeeper making a save. The spectator feels the tension and power in the actions of these footballers. With

just the use of LEDs, real movements of Singapore’s favourite sport are captured and transmitted instantly to the viewers, proving how powerful movement is.

## About the artist

**Rémi Brun** has been working for over 20 years as a movement engineer, specialising in motion capture for 3D images and special effects for the cinema as well as scientific research in motion. From manipulating movement in all shapes & forms, Rémi has come to see movement like a material on its own, independent of its matter, shape, sound and colour. His job is to bring life in the form of a body in one way or another through capturing movement using “Motion Capture”. Through Rémi’s private projects, he is trying on the contrary to find ways to extract movement from the body matter. Rémi creates digital sculptures that reflect the graceful movement of any living being, from animals to humans. This movement can range from a delicate and beautiful pirouette of a ballerina, to a powerful sprint of a panther catching its prey.

---



## ***Lighthouse of Time***

By Danny Rose (France)

Location: ArtScience Museum Façade **2**  
*Presented by Marina Bay Sands*

For *i Light Singapore - Bicentennial Edition*, the facade of ArtScience Museum is transformed into a lighthouse for a new age; a gigantic light sculpture of dancing lights that we see every day.

Viewers are immersed in an atmosphere created by an abstracted

dance of light and shadow, the coloured lights appear to possess mass and weight and seem to model the Museum facade by playing with the perception of space. Signaling a point of reference and providing an intangible constant in time, these lights orchestrate a spectrum of emotions in viewers.

## About the artist

**Danny Rose** is a multidisciplinary art and design team that specialises in creating and realising super-sized audiovisual shows, multimedia immersive experiences, interactive 3D mapping on urban surfaces, architectural art mapping, multimedia installations and light shows - ranging from events, music, theatre, opera, museum design, light festivals, public space staging. Their vision is creating “total immersion in multimedia experience” and applying their creativity and artistic vision on several contexts.

The team has recently won the AEAFGOLD AWARD (2017), Digi Award NYC (2015), Creative Award at Guangzhou Light Festival, AEAFF SILVER AWARD (2017) and AEAFF AWARD (2017) nomination.



## **Reflecting Holons**

by Michiel Martens and Jetske Visser  
(The Netherlands)

Location: Raffles House at Fort Canning Park **32**

*Presented by NParks*

**Reflecting Holons** showcases the ephemeral magic of light and movement. Long strips of oil-like

transparent foils combined with a microcontroller become a visual entity reflecting lights around them as if they were water droplets. This indoor installation fills a whole space with dancing reflections on the floor and the walls.

Blowing bubbles brings a smile to the young and the old through generations; a universal joy that gives certain connectivity. It is an artwork which is multicultural and an experience that brings technology and wonder together. It is a bridge in time and a bridge through cultures.

### **About the artists**

Central to **Michiel Martens** and **Jetske Visser**'s work are the themes of movement and transformation inspired by nature, thereby sharing the thought of things being dynamic rather than static. As designers, educators and organizers, Martens and Visser have worked with numerous Dutch and international companies, academies, design studios and exhibition spaces. Amongst these are Forbo, Desso, Kendix, De Ploeg, MU Artspace, Dutch Invertuals, Willem de Kooning Academie, Textielmuseum, Nanjing University, the Van Abbemuseum, Gemeente Museum The Hague, Rijksmuseum Twenthe and the design weeks of Milan, Paris, Eindhoven, Amman, Beijing, Bulgaria, London, Amsterdam, Brasil, New York and more. Their work is included in the art collection of Textiel Museum Tilburg and Rijksmuseum Twenthe.

.....



## **Sails Aloft**

by Biangle Studio (Estonia)

Location: Marina Bay waterfront promenade **9**

With their feet planted on the gunwale, their fists tightly gripping the ropes and their gazes turned upwind, the racers are as much part of the boat as the wood itself. And as they hear the starting signal, they set the sails aloft and the sampan panjang picks up speed without delay.

Inspired by the original sampan panjang of the Orang Laut and by its later racing variations, **Sails Aloft** is a holographic art installation that creates a snapshot of a 19th century sailboat race in the region. Visible from both The Promontory and Mist Walk, the artwork is designed to catch the wind, just like the boat it is based on. And when it expands, it shows not just one race boat, but also some glimpses of its competitors, who are still neck and neck!

**Sails Aloft** is part of Biangle Studio's Ghost Ship series of installations.

### About the artist

**Biangle Studio** is a collaboration between two digital nomads who provide avantgarde creative services. As an author/editor tandem, Mihai Baba and Daiana Folea design large scale art installations that offer intangible, yet unforgettable in-person experiences.

---



### **Shades of Temporality**

by SWEATSHOPPE - Blake Shaw and Bruno Levy (USA)

Location: Marina Bay Link Mall entrance **10**

What does it mean to use time as an element for artistic composition? Moving images are in fact the manifestation of time as visual phenomenon, sequences as virtual records of possible worlds. **Shades of**

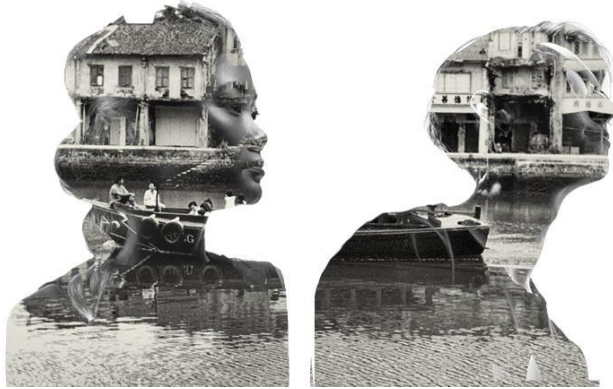
**Temporality** combines video painting technology with content, exploring the themes of complexity, adaptation, social ecology, sustainability and temporality. It attempts to break the barrier between the spectators and creator, allowing the audience to participate in a critical process that enables them to work with moving images as a tool for mark making in public space. Using electronic paint rollers and custom software, the audience will be able to virtually "paint" videos, in real time, onto the wall, creating endless combinations of moving murals in the process.

### About the artist

**SWEATSHOPPE** is a multimedia art collective created by Blake Shaw and Bruno Levy in 2009. The group develops new technology to manipulate time-based media for the purpose of constructing guerrilla digital street art installations. They are most well known for their "video painting" technology that allows them to paint videos onto walls in public space in a manner that is similar to the way graffiti artists do flyposting with wheat paste. They have shown their works in exhibitions, events and festivals in over thirty cities around the world and have won awards including the Vimeo Award (Captured Category), the One Screen Award, and the Le Havre Biennale Prix Partouche.

## **Shadow Exposed**

by Judy K Suh x Visual Feeder (USA)



Location: Mist Walk (next to Red Dot Design Museum) **8**

**Shadow Exposed** plays with the nature of projections being both moving images and a source of light. It invites visitors to interact with the installation using their own shadows to reveal or conceal layered images. On a large screen stretched along the Mist Walk,

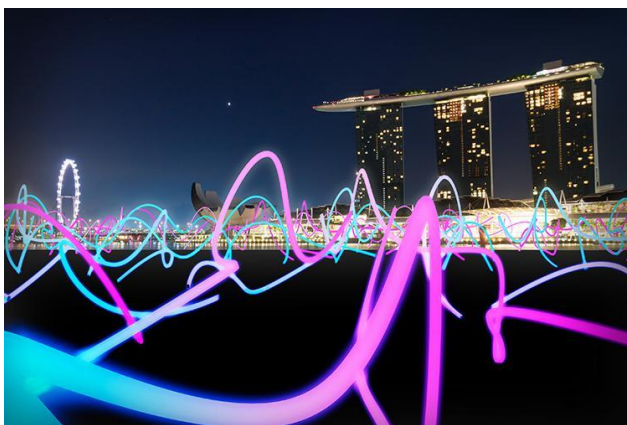
layers of images from Singapore through the decades will be projected. Depending on where the visitor stands, his/her shadow will reveal different layers that offer a glimpse into Singapore's history and its evolution.

### **About the artists**

**Judy K Suh** is a Korean American artist and filmmaker from Chicago. Her work is an ongoing exploration on how video can interact with the physical world, often using projection mapping. She has exhibited her work in many countries—in galleries, events, building lobbies and theatrical settings, as well as for commercial purposes in brand activation, retail and restaurants.

**Visual Feeder** is a Chicago-based arts technology company that creates high-end installations for events and commercial space. Visual artist and musician Edward Yang is the founder. He became heavily involved in projection mapping in 2016, and since then has created and overseen multiple projects including installations at TEDxIIT (Illinois Institute of Technology) and the Miami Design District.

.....



## **Squiggle**

by Angus Muir (New Zealand)

Location: The Promontory @ Marina Bay **12**

**Squiggle** is a twisting mass of 200m of digital neon tubing on a custom-built steel framework. The sea of twists and turns fills The Promontory @ Marina Bay and allows visitors to interact with the installation using little joysticks that allow the change

in colour, speed and direction - an abstract reflection of this very multicultural world we live in.

## About the artist

**Angus Muir** creates moments. Specialising in atmospheric architecture, Muir's work is dedicated to conceiving and executing contemporary, immersive experiences. Springing from an architectural basis, Angus' design approach is conceptual, ambitious and site-specific, acknowledging historical influences of the area while infusing fresh, contemporary energy into a space. With a strong background not only in the theoretical world of design but also practical fabrication and application, his designs are fastidiously conceived and crafted from end to end. For all those who encounter an Angus Muir installation, a sensory journey is undertaken through his innovative manipulation of space and sense.

---



## ***The Cat in the Garden***

by Loom Prod (France)

Location: Merlion Park **18**

*In collaboration with Video Mapping Festival, Lille, France*

*Presented by Singapore Tourism Board*

Light waves inject energy into the Merlion to create images that reveal scenes of nature together with snippets of Singapore's daily life.

***The Cat in the Garden*** combines the early days of a pure natural world, calm and contemplative, with a multicultural modern world we live in today that is festive and full of life. The viewers will travel through seven colours of the light spectrum from red to violet, alluding to a rainbow; a poetic bridge to nature.

## About the artist

**Loom Prod** is a video mapping production studio located in Lille (Hauts-de-France) specialising in scenario, visual and sound design, technical installation and public space management. As part of the Collective Interest Cooperative Society associated with the Video Mapping European Centre, Loom Prod gathers many talents who have benefited from this support mechanism.

---



## ***The Floating Lighthouse***

by Milenko Prvacki, Ryf Zaini and Robert Casteels (Singapore)

Location: Marina Bay lower boardwalk steps **7**

***The Floating Lighthouse*** is a metaphor of lightness and interactivity that intrigues the sense of sight, hearing and touch. It is made up of sustainable materials; flexible, resilient and resourceful, just like the

people of Singapore. As the lighthouses gently float in Marina Bay, visitors are invited to activate buttons to play unique sounds complemented by lights radiating out from the top of the floats. Synced with music, these floats become a form of beacon reminding visitors of the convergence in and out of the port of call, our country Singapore while welcoming them to our home.

### **About the artists**

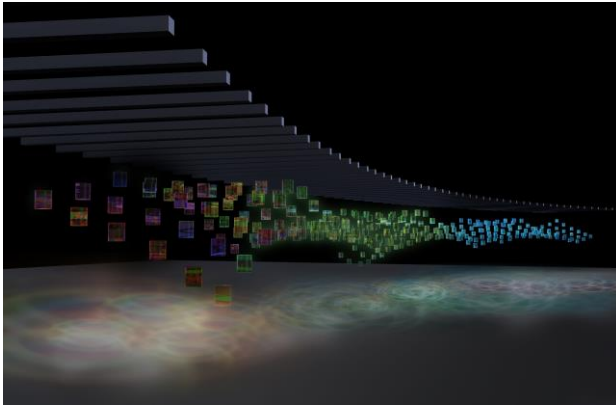
**Milenko Prvacki** is one of Singapore's foremost artists and art educators. He was awarded the Chevalier de l'Ordre des Arts et des Lettres by the French government in 2011, and Singapore's Cultural Medallion for Visual Arts in 2012. He has exhibited extensively in Europe and USA since 1971, and in Singapore and the region since 1993. He has participated in major exhibitions, most notably the Biennale of Sydney (2006).

**Ryf Zaini** is an interactive installation artist. His unique art form blends engineering and art to create a seamless integration that is both conceptual and immersive. His installations involve different mediums, as he believes that art is ever changing. As technology becomes the catalyst, it changes the landscape of art making further, creating new hybrids of art.

**Dr. Robert Casteels** is a composer, conductor, pianist and educator who believes that these activities form an intertwined part of music making. Robert has conducted professional orchestras in 20 countries with a repertoire of 600 works ranging from the early classics to contemporary music. In 2001, he was awarded the Christoffel Plantin Prize, Flanders' highest cultural award, for his cross-cultural research.

.....





## ***The Rainbow Connection***

by Yun (Singapore)

Location: Marina Bay Sands trellises **3**

*In collaboration with Bold at Work, Lion Befrienders, NTUC Health, Pacific Activity Centre, ReadAble & Catchplus, Woodlands Health x Sunlove Senior Activity Centre, Yishun Health x Touch Community, and Wellness Kampung*

***The Rainbow Connection*** is a display of solar light modules suspended to form a shifting prismatic projection on the ground. The modules come together to form a canvas of light that explores the fantastical dreamscape of the deep sea, the woods, and the clouds. As the modules gently rotate and sway in the wind, the sculpture seems to come alive with shifting shadows, projecting the imagination of the creator.

The light units are made from upcycled cookie containers combined with solar lights. Co-created with the community, the art piece is a portrayal of the social fabric that holds individuals together. While every individual is different, every individual has a part to play to form something bigger.

### **About the artist**

Since graduating from NUS Industrial design in 2014, **Yun** has worked in various companies such as Nakamichi, Asus Design and Dell Computers. She is currently an industrial designer at P&G, bridging technology and consumer experiences. Her most recent foray into lighting installations was in 2017, where she presented MoonFlower at i Light Marina Bay (2017), Scottsdale Canal Convergence in Arizona, USA (2017) and Bella Skyway in Torun, Poland (2017).

.....



## ***Time Traveller***

by Eko Prawoto (Indonesia)

Location: Clifford Square **16**

*Presented by The Fullerton Heritage*

In this fast-changing era, everything seems to be easily forgotten from our collective memory. Inspired by bamboo fish traps, an artifact of a recent past that already seems too distant to be bridged between generations, ***Time Traveller*** is a visitor from the past to our present.

Situated between One Fullerton - a result of development of the new city and Clifford Pier - the old landing point for travellers who arrived in Singapore via sea, **Time Traveller** stands tall between the old and the new as a bridge between generations.

## About the artist

**Eko Prawoto** is a Jogjakarta-based architect and educator who combines contemporary design with local knowledge. Eko is known for his expertise in the Indonesian bamboo tradition, and the art installations and projects that he creates for the community. As an artist he has exhibited widely internationally, including *Poesia di Paglia*, The arte all' Arte, Italy (2003), *Shrine For Mother Nature*, The Echigo-Tsumari Art Triennale, Japan (2003), *Bamboo Shrine*, Anyang Public Art Project, South Korea (2005), *Toki no Hashi*, Kamikatsu Art Festival, Japan (2007), *Lake Entrance Common Ground*, Australia (2007), *Lung*, Asia on The Edge, Singapore (2008), *The Bamboo Temple*, Tapestry of The Sacred Music, Singapore (2010), *Zero Project*, Tasmania Art Festival, Australia (2010), *Bamboo Temple*, Espace Culturel Louis Vuitton, France (2011), *Murbazaar*, Murau Austria (2012) *Garbha*, Jendela Esplanade, Singapore (2012), *Wormhole*, Commissioned work for Singapore Biennale (2013), *Shells at The Sea*, Holbaek, Denmark (2016), *Bamburst*, Trans-action Sonsbeek 2016, Arnhem Netherland (2016), *i Light You So Much*, i Light Marina Bay (2017), and *Bale Kambang*, Europalia, Antwerp Belgian(2017).



## Why Green?

by DP Architects - Ng San Son, Bob Teo, Josiah Leong, Johann Lim, Jireh Lee, Theodore Goh, Shawn Teo, DP Lighting (Singapore)

Location: Event Square 4

Green is, and will be our country's binding medium. Coming from every corner of the globe, our landscape is a tangible confluence of connections from all over the world. Inspired by walks through the streets and cycles through the parks of Singapore, **Why Green?** posits various species of plants in our country that hint at who we are. Instead of a literal collection of the plants, the white 3D printed flowers are a timeless catalogue of our present and history, while offering a glimpse into what our digital future could be.

## About the artist

**Ng San Son**, is a leading Singaporean architect from DP Architects and also an adjunct design tutor at the NUS School of Design and Environment. Recipient of multiple accolades for his community centric and socially conscious architecture, San Son is known to be driven by a relentless desire to contribute back to the social, natural and built environments. San Son also believes that architecture and art present opportunities for open interpretations of the intended and encourages interesting adaptations of space by the users through exploration and

interaction. San Son was recently recognised as one of Singapore's 20 under 45 top architects by the Urban Redevelopment Authority (URA). Collaborating with six young architects (Bob Teo, Josiah Leong, Johann Lim, Jireh Lee, Theodore Goh, Shawn Teo), the team hopes to portray the vibrant artistry of the architectural profession.

---



## ***With A View***

by Superiore Design Associates – *Ryan Linardy and Lim Cheng Jun* (Singapore)

Location: River Promenade along Parliament House 26

Singapore shophouses are a visible canvas that portrays Singapore's intriguing multicultural and architectural influences throughout the years. Its unique windows are a quintessential

representation of our past, a part of the culture that is full of character adding to the identity of the city.

***With a View*** is an artwork made of parallel mirrors in the shape of our shophouse windows, creating a series of smaller and smaller reflections that appear to recede into an infinite distance. Through our reflection, we discover the essential and transformative qualities that we need to become whole and fulfilled, to grow and expand and gear towards the journey to find out who we are.

## **About the artist**

**Superiore Design Associates (SDA)** is an integrated creative design firm based in Singapore. They are a collective of talented creative individuals specialising in various areas of spatial design and art direction. They design interiors for homes, workplaces and creative spaces. Their core mission is to create brand value through spatial language. With the same value, they focus on approaching various kinds of design with the same emphasis.

---

Artworks on Bridges

**Run Beyond**

by Angelo Bonello (Italy)

Location: Elgin Bridge 28

**Run Beyond** is an incitement to go over the limits imposed by reason. With a man taking a seemingly impossible jump against the backdrop of modern Singapore, Elgin Bridge becomes the place of liberating action. The artwork drives individuals to overcome fears and constraints in order to open themselves, with the power of imagination, to other cultures, new friendships and unknown horizons.

**About the artist**

**Angelo Bonello** was born in Turin. He developed his interest in painting and sculpture during childhood under the guidance of Impressionist artist Sergio Manfredi. Later he met artist Antonio Carena from whom he learnt the abstract and conceptual arts before landing on the shores of Techno-Art with artist Piero Gilardi. Over the years, he developed a visual capacity and a stylistic approach based on the dimensional distortion of the scenic space and landscape. In 1997, he moved to Rome and with Alberta Nunziante, founded KITONB where he has created the light artwork Luxometro, symbol of the “Notte Bianca” of Rome (2006). To date, he has created and directed more than 150 shows and artistic events in over 300 cities worldwide.

.....  
**Where do stories begin / Where do stories end**

by Michael Lee and Perception3 (Singapore)

Location: Cavenagh Bridge 24

*Co-created with National Arts Council*

**Where do stories begin / Where do stories end** is a two-part, text-based and site-specific installation that invites us to consider the notion of history as a series of layered stories that unfold and fold into one another perpetually. The two parts of the title prompt us to reflect on what we know (or what we think we know) of Singapore’s founding history, and to consider how stories in history are always purposefully framed with specific beginnings and ends. Who decides on where a story starts and ends? What more could we learn from other perspectives yet to be heard or explored? How do we begin to tell our own stories—of ourselves, of places, people, and things that surround us; and what would their endings be?

**About the artists**

**Michael Lee** (b. 1972, Singapore) is an artist and independent curator based in Singapore. He researches on urban memory and fiction, especially the contexts and implications of loss. He transforms his observations into diagrams, models, environments, events or texts. The international exhibitions he has participated in are Shenzhen Sculpture Biennale (2014),

Kuandu Biennale (Taipei, 2012), Singapore Biennale (2011) and Shanghai Biennale (2010). He was part of the curatorial team for Singapore Biennale 2016. He was a 2005 recipient of the Young Artist Award conferred by National Arts Council of Singapore.

**Perception3** (est. 2007, Singapore) is an interdisciplinary art duo consisting of artist/writer Regina De Rozario (b. 1973, Singapore) and design practitioner Seah Sze Yunn (b. 1977, Singapore). Its collaborative practice is focused on exploring the notions of memory and loss through the examination of relationships and narratives encountered between the self and the city. The duo's works encompass interplay of text, photography and video, and have been included in local and overseas showcases such as "Digital Homelands" at National Museum of Singapore (2008), the "Titian Budaya" cultural festival (Kuala Lumpur, 2015), and Singapore Biennale 2016.

.....

## ***Time Rhythm***

by Xavi Bové and Onionlab (Spain)

Location: Anderson Bridge **22**

Since the ancient era, rhythm has been a close representation of time. Music, a universal language, is the oldest way of connecting people and expressing emotions. ***Time Rhythm*** showcases time passing through musical rhythms of Singapore through visual patterns.

Presented as a gigantic light metronome on Anderson Bridge, the artwork will drive through different time scapes. The entire bridge is transformed into a musical instrument, playing with slow and fast tempos, evolution and even silence.

## **About the artists**

**Xavi Bové** is an artist, curator and professor based in Girona, Spain. As a visual composer, Bové is passionate about tradition and innovation, the organic and the digital. Bové directs audio-visual projects where art and technology go hand in hand, and where the image keeps a deep and close relationship with the music. From a technical background as a telecommunications engineer, his work is characterized by providing a sensitive approach in fields such as live music performance, video-mapping, live visuals, video art, light installations and new media art.

**Onionlab** is a multidisciplinary studio in Barcelona specializing in directing and producing audio-visual shows for large events. The studio creates interactive experiences, motion design movies and audio-visual shows for companies that are related to design, art and technology.

## **TIME FRAME**

by DONIS (The Netherlands)

Location: Esplanade Bridge 20

In light of Singapore's Bicentennial, a carpet of information occurring in real time is projected under Esplanade Bridge. **TIME FRAME** uses information from [www.worldometers.info](http://www.worldometers.info) to report, celebrate and engender awareness on the development of Singapore in relation to the world. Pedestrians will stumble upon the swiftness of the world's pace while contextualizing Singapore's outstanding development. Technology and information blend in an immaterial manner under the physicality of the bridge, where **TIME FRAME** offers an unprecedented experience of data-human awareness in real time.

### **About the artist**

**DONIS** is an international multidisciplinary office founded in 2009 by Fernando Donis, an associate to Rem Koolhaas for eight years and the designer of CCTV Headquarters in Beijing for OMA as well as the new Jeddah International Airport in Saudi Arabia. With offices in The Netherlands and Mexico, the studio has also won several international prizes, such as the first prize for the ThyssenKrupp Architecture Award (2009) with the Dubai Frame project; first prize in the competition for the National Palace of Justice in Paris; and first prize for the design of an Olympic emblem for London (2012).

.....

## **Oriflammes**

by Sebastien Lefevre (France)

Location: Jubilee Bridge 19

Hundreds of vertical flags on Jubilee Bridge are animated by kaleidoscopic lighting as **Oriflammes** flaps with the gentle breeze. Connecting two opposite ends of the waters with a dynamic display of colours, this artwork combines light, colours and movement. Alive night and day, crossing the bridge is like a journey towards new horizons.

### **About the artist**

**Sebastien Lefevre** began his career in lighting for performing arts. With a desire to express himself in a more personal way through his own artistic projects, he created his first light concepts for a urban lighting festival "la Fête des Lumières" in Lyon (2004). His works mainly focus on transforming architectural landscapes with luminous scenography. His creations were presented at "Fête des Lumières" in Lyon, Bruxelles in Belgium, Leipzig in Germany, Lausanne and Geneva in Switzerland, Bucarest in Romania, Göteborg in Sweden, Moscow in Russia and Dubai in UAE. He is proud to present his work for the first time in Singapore.

.....

### ***The Time Vortex***

by Vendel and de Wolf (The Netherlands)

Location: The Helix bridge **1**

How fantastic would it be if one could travel in time? Excited by the prospect of time travel, ***The Time Vortex*** attracts curious visitors to walk towards the tempting vortex that comes to life on The Helix bridge. In the middle of the bridge, people will be surrounded by beautiful moving lights, whizzing through space. Regardless of background, culture, religion, country or race, people will be drawn to this amazing space and get an opportunity to interact with one another on this specially programmed bridge during the Festival.

### **About the artists**

Design duo **Paul Vendel** and **Sandra de Wolf** have been working together since 1986 when they first met at the Art Academy in Amsterdam. Their works include large permanent sculptures for public spaces as well as temporary installations, often using recognisable and existing objects or materials. Nature and technology are their main sources of inspiration, and their works are always based on site context.

## Multimedia Show

### ***Bridges of Time***

by ACTLD (Belgium)

Location: Singapore River in front of Asian Civilisations Museum **25**

***Bridges of Time*** tells a poetic story of a universal traveller who sails through time and space to reach this flourishing island. Spectators are guided through the timeless journey of travellers from yesterday, today and tomorrow, discovering and rediscovering Singapore throughout the centuries. An immersive multimedia show presented in the Singapore River for the very first time, ***Bridges of Time*** creates a breathtaking ancient landscape against our contemporary skyline. Every night, an enchanted scenery of light, sound, projection and water enlivens the river.

Once upon a time, the Bridges of Time ...

### **About the artist**

Founded in 1995 by Koert Vermeulen, **ACTLD** is a lighting & visual design agency based in Belgium. For over 20 years, their experienced team, with its expertise in architecture, art, set design, interior design, lighting, video and science has never stopped innovating through new, challenging projects. With an integrated approach, ACTLD shares its know-how in lighting, architecture and technology to bring public entertainment to the next level.