

EDAform Installation Guide

Table of Contents

1. Introduction	2
2. System Requirements	2
3. Installation Process.....	2
4. Running EDAform.....	2

Version: **5.0.0**
Last Updated: **11 Feb 2022**

1. Introduction

This guide covers the EDAform installation process. EDAform will be installed at either C:\Program Files\Edaxf\ or C:\Program Files (x86)\Edaxf\ directories.

2. System Requirements

- Processor Speed – 1.8 GHz (minimum)
- RAM Size – 4 GB (minimum)
- Hard Disk Space – 8 MB available space to store the software
- Operating System – Windows 7 (minimum)
- Screen Resolution – 800X600 pixels (minimum)
- Java runtime 1.6 and above.

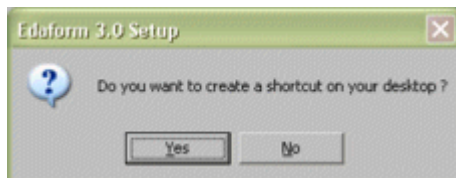
3. Installation Process

You will need the administrator account to do installation.

1. Download the setup program from the following url to your PC.
<https://www.ura.gov.sg/Corporate/Guidelines/Development-Control/Planning-Permission/Folder/Forms>

Note: Java runtime is not included in the installer.

2. Locate the setup file in the folder in your PC where you have downloaded and double-click to execute it.
3. Once completed, it will ask you to create the shortcut on your desktop.



Note: if you do not create the shortcut, you have to access EDAform from the windows menu.

4. Running EDAform

There are two ways of launching the EDAForm application:

1. Double click the EDAform icon found on the desktop.



2. Go to Windows Start -> EDAForm.