

## Annex 2

### BUILT EXAMPLES OF EFFECTIVE SCREENING

#### Screening of Mechanical and Electrical Services



#### **Marina Bay Financial Centre**

Screening of Mechanical and Electrical Services is well integrated with the façade and roof crown expression.



#### **The Central**

Screening of Mechanical and Electrical Services by angled louvers of varying directions with sufficient depth

#### Screening of Car Parks

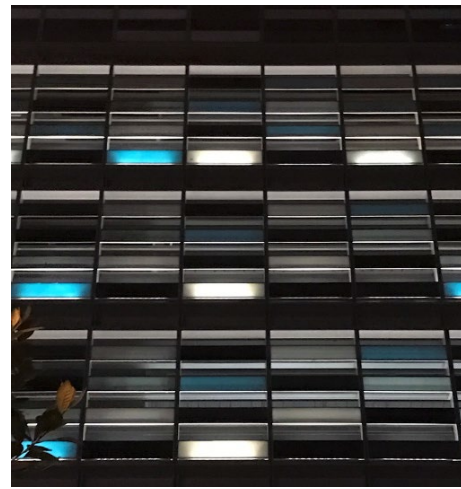


#### **M Social**

Screening of car park with by angled louvers of varying directions with sufficient depth



**Icon**  
Screening of car park with louvers with sufficient depth.



**Guoco Tower**  
Screening of car park by two rows of panels that form part of façade expression.

**BUILT EXAMPLES OF LESS EFFECTIVE SCREENING**

The following has been observed to be less ineffective:

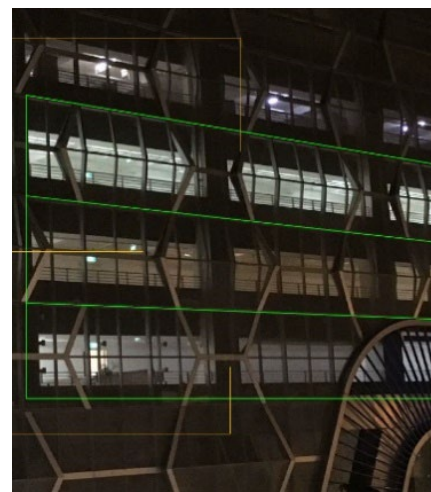
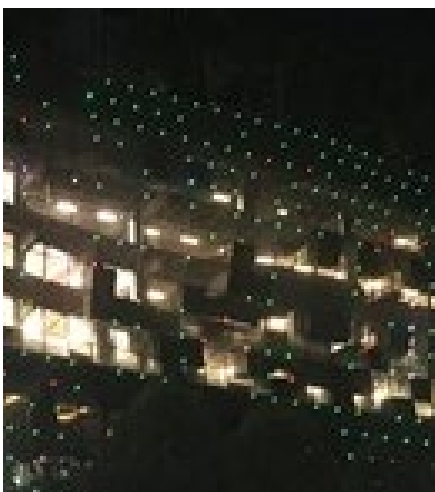
- Screening with insufficient depth; and
- Screening solely via greenery or night lighting as this is dependent on their continued upkeep and maintenance



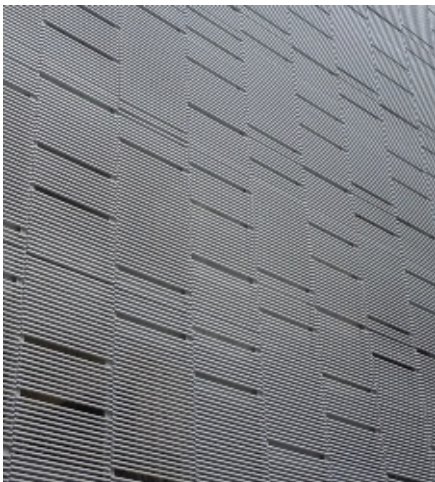
A/C ledges:  
Louvers with insufficient depth



Car parks:  
Relying solely on greenery for screening is not effective as greenery may thin out over time and is not effective as a screening device on its own.



Car parks:  
Perforated screening material lacks sufficient thickness or depth and is ineffective as a screening device when the interior of the car park is lit.



Car parks: Louvers without sufficient depth are ineffective as a screening device when the interior of the car park is lit.