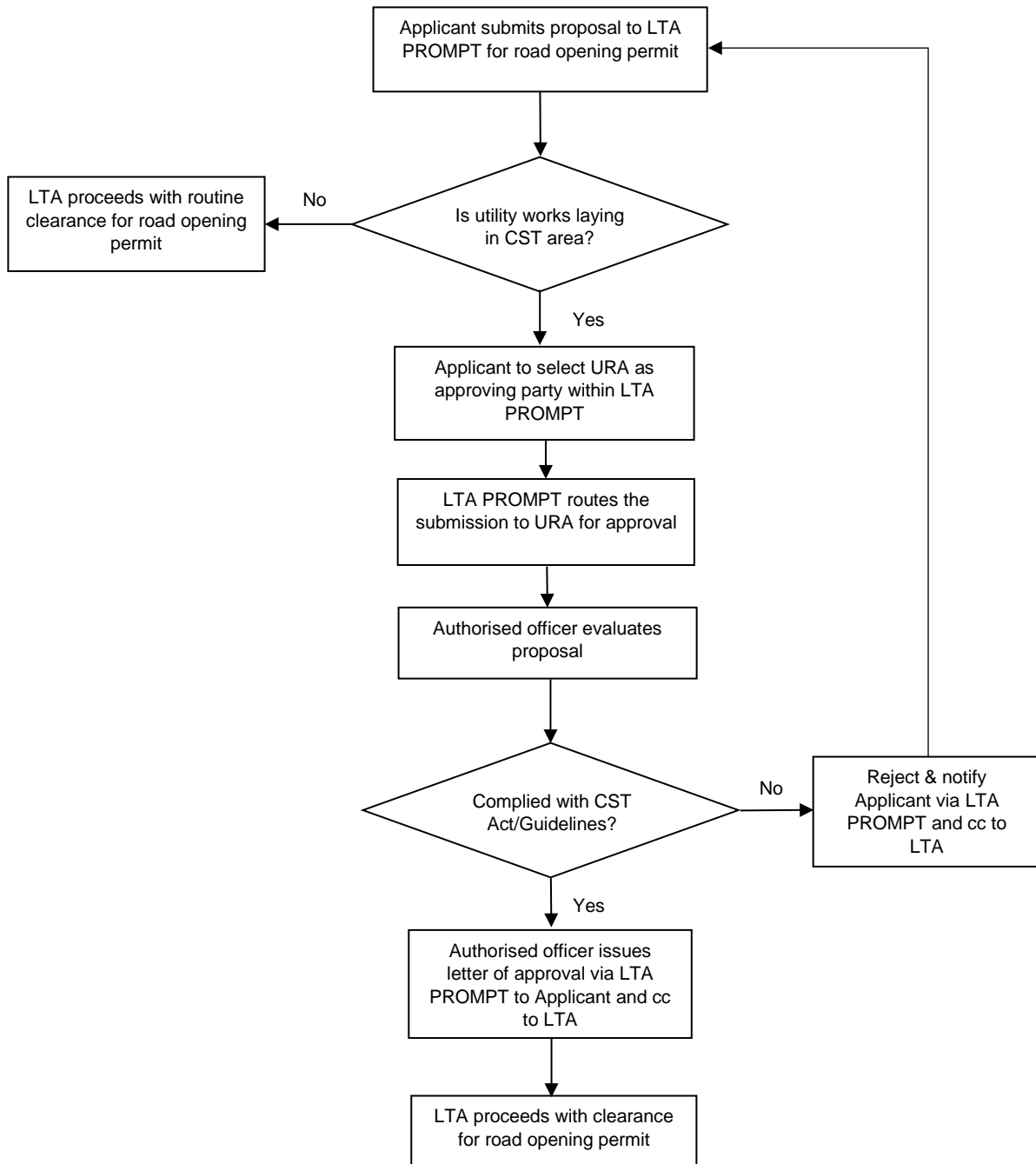


**SUBMISSION WORK-FLOW FOR LAYING OF UTILITIES WORKS<sup>1</sup> WITHIN  
COMMON SERVICES TUNNEL (CST) AREA  
(via LTA PROMPT System)**



<sup>1</sup> Utility suppliers or service providers planning to lay their services/utility lines within the gazetted CST Area shall submit their proposed utility alignment/routes to the CST Authority for approval via LTA Prompt system. Road opening permit approval will be issued by LTA once the proposed laying work is approved by the CST Authorised Officer