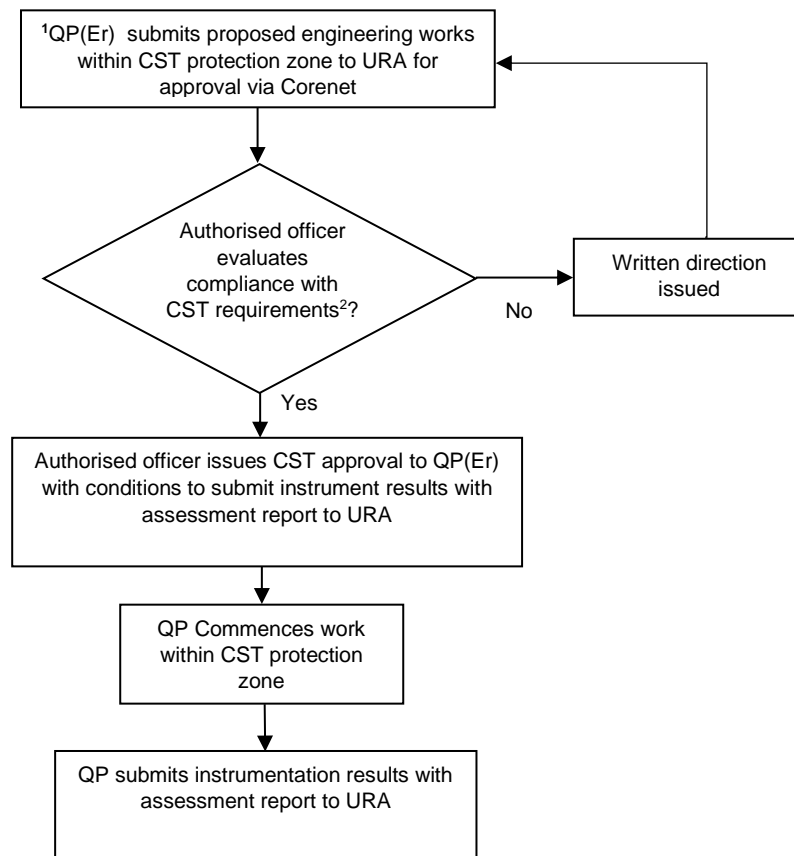


**SUBMISSION WORK-FLOW FOR ENGINEERING WORKS WITHIN
COMMON SERVICES TUNNEL (CST) PROTECTION ZONE
(via CORENET – BP / ST SUBMISSION STAGE)**



Note:

1. QP can concurrently submit to BCA for ST approval however work can only commence when both relevant ST and CST submission are approved.
2. Refer to guide for works within CST area and protection zone.