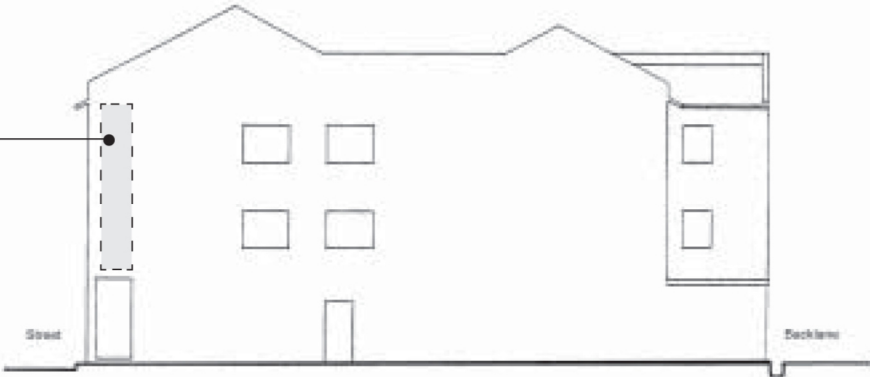
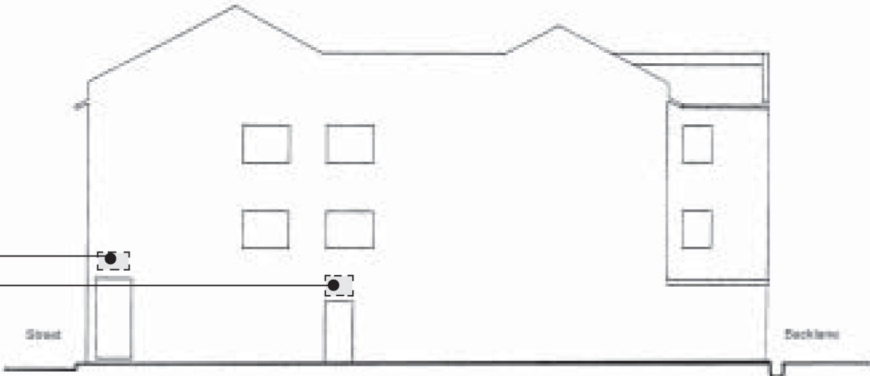


Location and Size for Sign Display

Figure 8: End Gable Wall

Sign to be confined to the width of entrance to five-footway and door to upper storey, where applicable.



Variations can be considered based on the following criteria:

- The sign to be attractively designed.
- It can be painted on the wall, in individual letters and graphics, or flat-mounted display panels. Projected sign is not allowed.
- Not to cover or block any architectural elements or features/ornaments.
- Not to overwhelm or adversely impact on the architectural character of the building.

