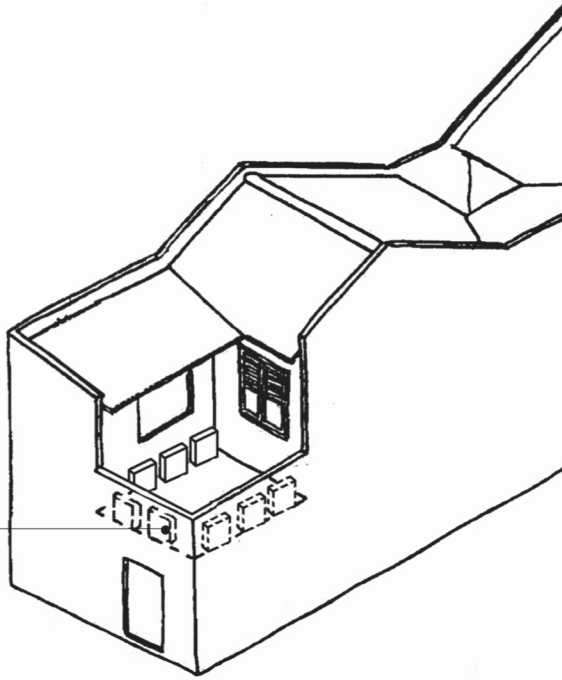
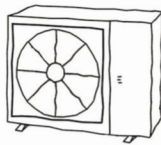


Figure 20 : Condensing Units Placed at Rear Parapet and Walls

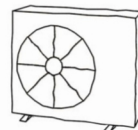
Condensing units neatly or compactly placed at the rear. Units are to be screened unless they are small and not visible from street level (See examples below)



SHOPHOUSES WITH REAR COURT

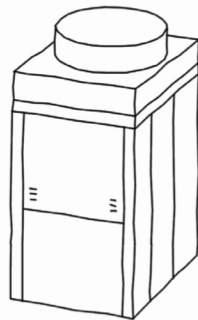


Single unit

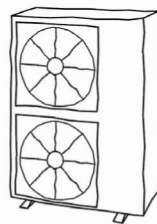


Single unit

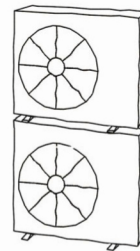
SCREENING NOT REQUIRED FOR THE ABOVE EXAMPLES OF CONDENSING UNITS



VRV



Dual unit



Single unit - stacked

SCREENING REQUIRED FOR THE ABOVE EXAMPLES OF CONDENSING UNITS