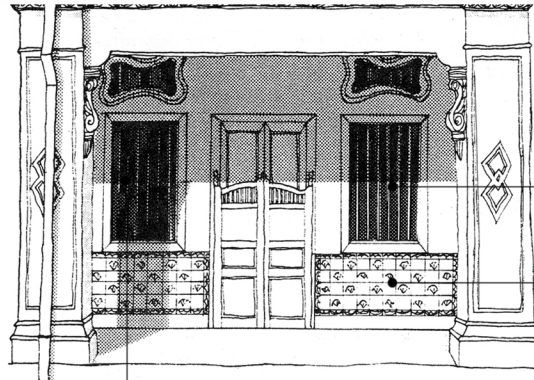


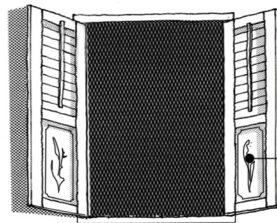
**Figure 4: Residential Front  
(for conserved building of non-residential use only)**

Residential Front with ornamental features



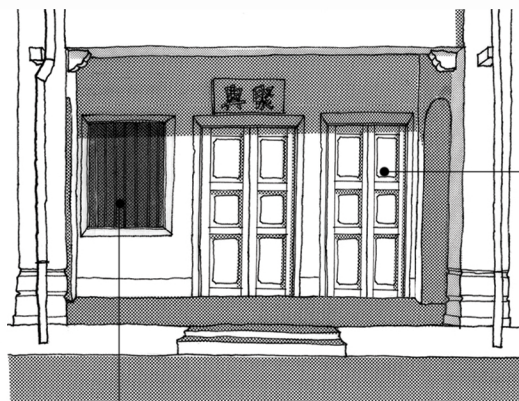
Conversion of window to door is not allowed

Ornamental features such as dado tiles to be retained

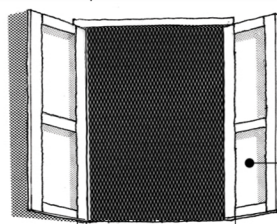


Original infill panels with carved decorations to be retained

Residential Front without ornamental features



If required, new door is to match the design and material of the original door



Original plain infill panel can be replaced with clear glass