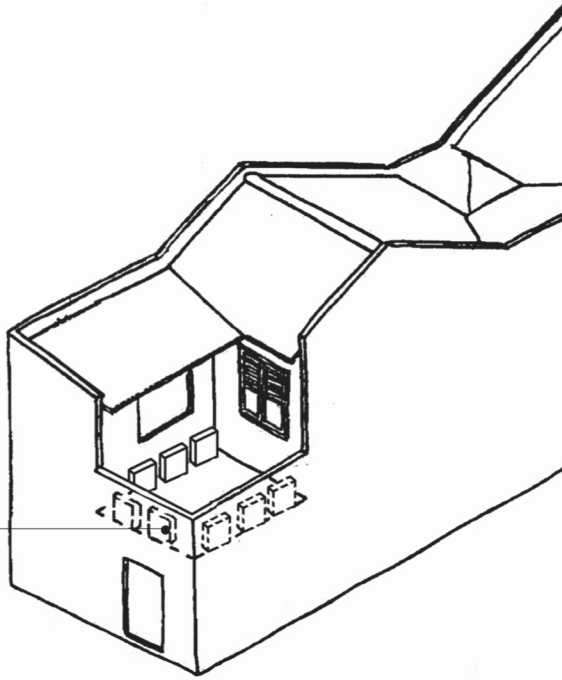
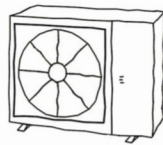


**Figure 18 : Condensing Units Placed at Rear Parapet and Walls**

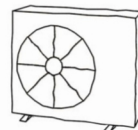
Condensing units neatly or compactly placed at the rear. Units are to be screened unless they are small and not visible from street level (See examples below)



**SHOPHOUSES WITH REAR COURT**

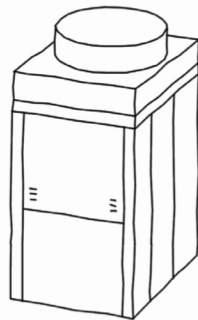


Single unit

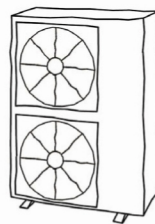


Single unit

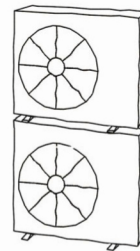
SCREENING NOT REQUIRED FOR THE ABOVE EXAMPLES OF CONDENSING UNITS



VRV



Dual unit



Single unit - stacked

SCREENING REQUIRED FOR THE ABOVE EXAMPLES OF CONDENSING UNITS