

1st Prize, Topic 3 Open Category

The Runway "Sheds"

MIX Design Studio

Stanley Lung Wai Cham

Kai Xu

Ziqing Li

Yu Hao

Lei Chai

Hao Wang

Nianxing Liao

Zhanbo Ma

Tao Wang

Zhuomecao Liang

Shuangxi Yang

Fangwei Wang

JURY CITATION:

The jury commended the scheme for sensitively connecting the spaces between the heritage buildings to create a vibrant node where social and cultural activities intersect, while respecting and celebrating the culture and identity of the former airport. The jury particularly appreciates the introduction of sheds that stay true to the scale and architectural language of the heritage buildings, intervening in the urban environment in a sensitive and versatile manner.

The Runway "Sheds"

Anchoring the Past and Future with Transience Architecture



**Design Concept:
From Passive to Active**

Runway "Sheds" is the design concept for the revamp of Former Paya Lebar Airport Building Complex. The overall design emphasis on the idea of light-touch integration by anchoring the old permanent building with new transience architecture. Inspired by large-scale industrial structure with different compartmentalized zones and functional spaces are under a single enclosure and canopy. The Runway "Sheds" is a series of new components and extensions which parasitise on the old building, extending movability flexibility, adaptability to a new level.

The vision of the Former Paya Lebar Airport Building Complex is to transform a group of "Passive" standalone permanent buildings to become an "Active" agglomeration multipurpose complex through the integration of temporary transient and transitory architecture, where people can find the traces of the past and interact with the new, vice-versa at the same time, enabling users to transcend between the old and new seamlessly.

**Reciprocal Compartments:
From Hightech-industrial to Retro-futuristic**

Keeping the former airport buildings, original facilities, large hangars and quality warehouses that are in good condition, the adaptive reuse design approach of the architecture has retained the heritage purity and reinforced the industrial essence by attaching new installation and component at appropriate places that provides a fresh appearance and new identity as a whole by bringing industrial heritage alive with the sense of high-tech, retro and futuristic atmosphere.

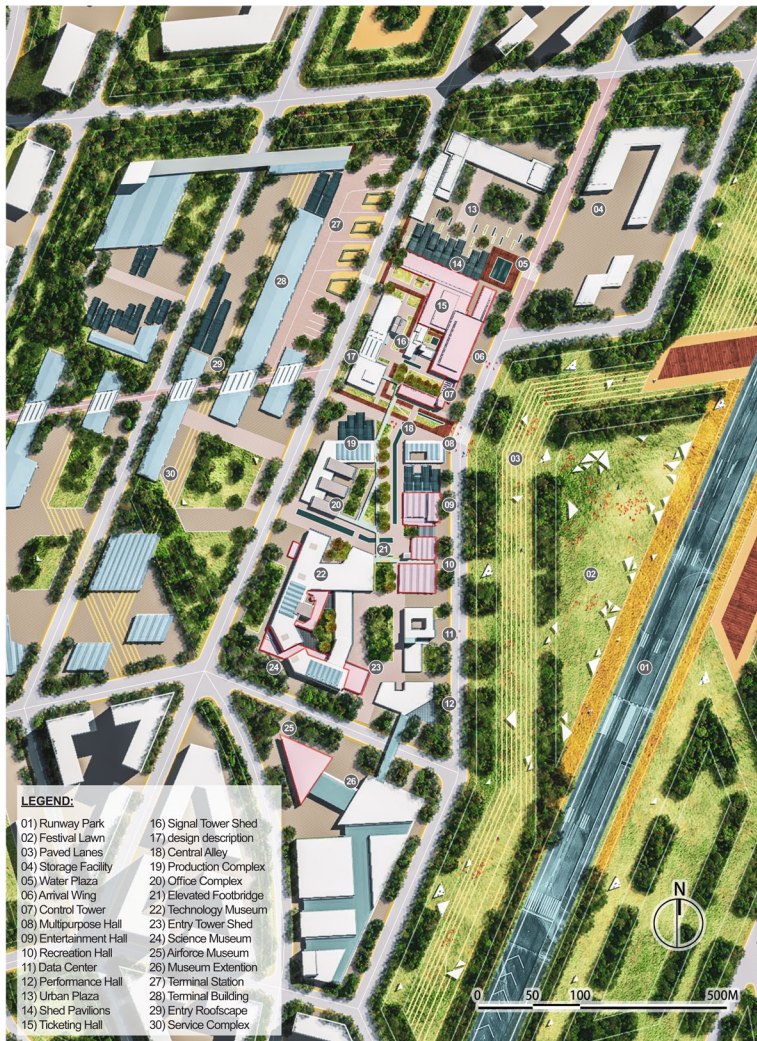
The Runway "Sheds" creates temporary space and various condition, enabling different activity scenarios to take place in order to make both the old static building and the new extensions are like a reciprocal, not only each has its own distinctive character but yet they are correlated and inter-connected with each other which takes mutual action and acting as one continuous piece.

**Parasitic Components:
From Static Building to Temporary Architecture**

The Runway "Sheds" is a series of parasitic and tectonic components which coexist with the existing facilities and former buildings like a symbiosis.

- The "Sheds" appears in 3 state of forms:
- Station Hall: transformable spaces for large-scale gathering and formal festival
 - Signal Tower: site visual orientation, vertical circulation between buildings and open-space;
 - Structure Canopy: open-air shaded space for pop-up and small-scale gathering events;
- The "Sheds" consists of 6 revamping design techniques that integrates the old and new:
- Covering: extended roofscapes with large glass canopies structure in between buildings;
 - Cladding: perforation and color panels fully with scaffolding attaching on existing facilities;
 - Cantilevering: lift building extensions and extension with overhanging and shaded space;
 - Coloring: building extension and addition facade with high contrast and saturation colours;
 - Connecting: catwalks grating footbridges, framing views portal and gateway connections;

These movable, adjustable and retractable "Sheds" could function individually or orchestrated as a group where compartments, zones and territories can be defined accordingly in order to accommodate different program, size, climate and time.



- LEGEND:**
- 01) Runway Park
 - 02) Festival Lawn
 - 03) Paved Lanes
 - 04) Storage Facility
 - 05) Water Plaza
 - 06) Arrival Wing
 - 07) Control Tower
 - 08) Multipurpose Hall
 - 09) Entertainment Hall
 - 10) Recreation Hall
 - 11) Data Center
 - 12) Performance Hall
 - 13) Urban Plaza
 - 14) Shed Pavilions
 - 15) Ticketing Hall
 - 16) Signal Tower Shed
 - 17) design description
 - 18) Central Alley
 - 19) Production Complex
 - 20) Office Complex
 - 21) Elevated Footbridge
 - 22) Technology Museum
 - 23) Entry Tower Shed
 - 24) Science Museum
 - 25) Airforce Museum
 - 26) Museum Extension
 - 27) Terminal Building
 - 28) Terminal Building
 - 29) Entry Roofscape
 - 30) Service Complex



Arrival Wing Entry with Public Lawn, Flower Stripes & Concrete Pavers



Ticketing Hall Gateway Plaza with Extractable & Expandable Sheds



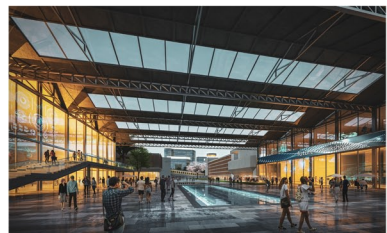
Terminal Building Arrival Hall with Pick-up & Drop-off Taxi Station



Internal Courtyard Garden with Magical Lighting & Performance Stage



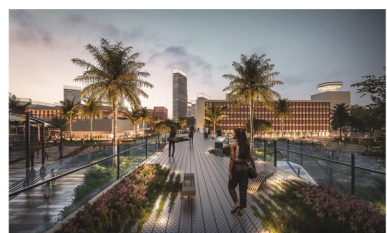
Central Corridor between Control Tower Building & Upgraded Hangars



Future Workshop Roofscape viewing towards Control Tower Building



Multilayers of Circulation and Connection Linkages between Art Folly



Elevated Footbridge design with Integrative Pavement and Planters

PARTICIPANTS' WRITE UP:

The Runway "Sheds": Anchoring the Past and Future with Transience Architecture

Design Concept: From Passive to Active

Runway "Sheds" is the design concept for the revamp of Former Paya Lebar Airport Building Complex. The overall design emphasises on the idea of light-touch integration by anchoring the old permanent building with new transience architecture. Inspired by large-scale industrial structure with different compartmentalized zones and functional spaces under a single enclosure and canopy, the Runway "Sheds" is a series of new components and extensions which parasites on the old building, providing a new, extended level of mobility, flexibility, adaptability.

The vision of the Former Paya Lebar Airport Building Complex is to transform a group of "Passive" standalone permanent buildings to become an "Active" agglomeration of multi-purpose complex through the integration of temporary transient architecture, where people can find traces of the past while interacting with the new, enabling users to transit between the old and new seamlessly.

Reciprocal Compartments: From High- techindustrial to Retro-futuristic

Keeping the former airport buildings, original facilities, large hangars and quality warehouses that are in good condition, the adaptive reuse design approach has retained the heritage purity and reinforced the industrial essence by attaching new installation and component at appropriate places. This provides a fresh appearance and new identity, bringing industrial heritage alive while providing a sense of high-tech, retro and futuristic atmosphere.

The Runway "Sheds" creates temporary space of various condition, enabling different activities and scenarios to take place. In order to make both the old static building and the new extensions respond in reciprocal manner, not only does the "Sheds" and former buildings have its own distinctive character, they are co-related and interconnected with each other, acting as one continuous piece.

Parasitic Components: From Static Building to Temporary Architecture

The Runway "Sheds" is a series of parasitic and tectonic components which coexist with the existing facilities and former buildings in a symbiosis. The "Sheds" appears in three forms:

- Station Hall: transformable spaces for large-scale gathering and formal festival;
- Signal Tower: site's visual landmark, providing vertical circulation between buildings and open space;
- Structure Canopy: open-air shaded space for pop-up and small-scale gathering events.

The "Sheds" consists of 6 revamping design techniques that integrates the old and new:

- Covering: extended roofscape with large glass canopies structure in between buildings;
- Casing: perforation and colour panels folly with scaffolding attaching on existing facilities;
- Cantilevering: lift building extensions and extrusion with overhanging and shaded space;
- Coloring: building extension and addition facade with high contrast and saturation colours;
- Connecting: catwalks grating footbridges, framing views portal and gateway connections.

These movable, adjustable and retractable “Sheds” could function individually or orchestrated as a group where compartments, zones and territories can be defined accordingly in order to accommodate different program, size, climate and time.