

Honorary Mention, Topic 2 Open Category

A Monument to Water

I'AUC

François Decoster

Caroline Poulin

Djamel Klouche

Lucile Pujol

Etienne Gilly

Sofia Gozzi

Carlos Peña Fernandez

Damien Nuyts Roussel

Hugo Bertrand

Andrea Pizzini

CENDES + TENarchitects & Planners Pte Ltd.

Jason Ang Kwang Lin

Neo Sei Hwa

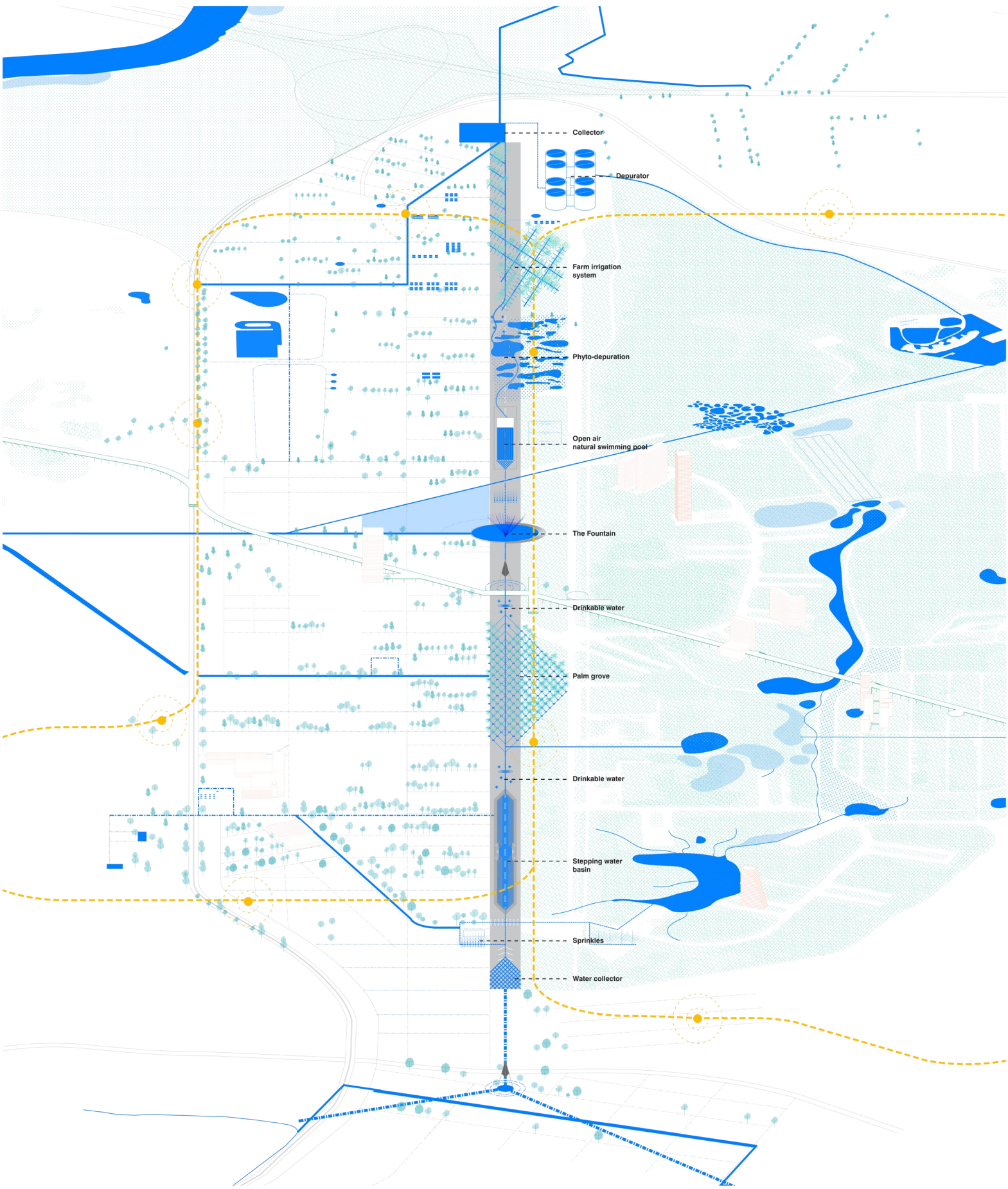
Tan Teck Kiam

Yihan Zhu

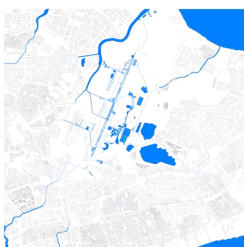
JURY CITATION:

The jury commended the scheme on its refreshing approach to engineer a comprehensive water system for the wider region. The choice of the title was apt, as the importance of water in the urban and natural landscape cannot be overstated. While the scheme is somewhat conceptual, the jury felt that the concept proposed forms a strong foundation for exciting landscaping ideas to emerge.

A MONUMENT TO WATER

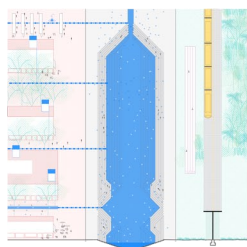


The runway is transformed into a monument to water, and an attractive and active community space in the heart of the new town as well as a water management system serving the entire city.



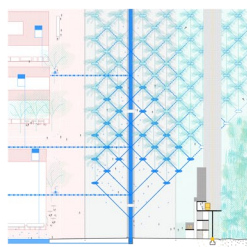
Water as civilization

The potential of a low-tech infrastructure for water is to leave something that enables a culture we don't know yet, and to leave something that can be reused, contained and held.



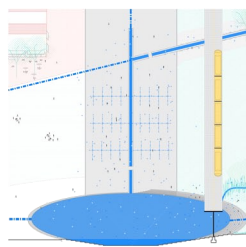
The stepping water basin

The steppings are a traditional heritage of the Indian culture. The stepping geometry is designed to accommodate large fluctuation of water from the rain season to the dry one.



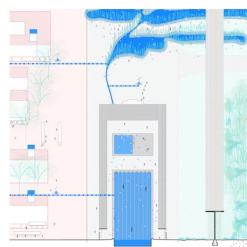
The palm grove

The palm grove flourishes over an irrigation system designed according to the liquid principle of the communicating vessels. The water flows from the main canal to a capillary system.



The Fountain

The fountain is situated at the very centre of the runway and of the proposed developments. The right border of the basin, towards the main grove, recalls the geometry of an amphitheatre.



The swimming pool and the phyto depuration

The Olympic swimming pool is the active spot of the runway infrastructure. The depuration of the exhausted water passes through a series of plants basins.



References

1 traditional coconut palm irrigation, Mumbai / 2 Phyto depuration, Ellis Creek Water Recycling Facility, California / 3 Step well, Akita Tengi Koi, Matsukoi India

PARTICIPANTS' WRITE UP:

A Monument to Water

WATER AS CIVILIZATION

Life and civilization are founded on aqueous basis. The world is in constant flux, the culture in ebb and flows.

Each culture, each society, relates to water in its own way. While being a practical necessity for humans and their economies, it is a lively element that is fun to play with, in and by.

Infrastructuring water allowed civilizations to thrive, from ancient Egypt in the Nile valley, to the aqueducts and roman baths in antique Rome, to Varanasi and its relation to the Ganga River, to modern cities such as Haussmannian Paris.

Water management systems have been conceived all around the world for the specificity of the local environment. The contemporaries aim to inherit that knowledge and to link them, passing from a local to a global lore. Here, the potential of a low-tech infrastructure for water is to install something that enables a culture we don't know yet, and to leave something that can be nourished, contained and held.

A MONUMENT TO WATER

The Runway is the almost exact scale of Central Park in New York, the Louvre perspective in Paris, or the Water Parterre in Versailles. It should be used as the main central figure of PLAB City. We propose to transform the Runway into a monument to Water that addresses both practical and cultural issues.

An attractive public space and active community space in the heart of the new town, as well as a water management system. Water is the resource of the 21st Century, just as oil was the resource of the 20th Century.

We propose that the Runway becomes an explicit and tangible manifestation of the transition from a world, society and cities of artificiality (with its airports and freeways) towards a world, society and cities reconnected to nature and humanness.

Along the transformed PLAB Runway as we envision it, water is useful and fun to play with. The devices we propose are designed as a comprehensive water management system for the entire new town as well as meant to provide highlights along the Runway promenade for people to enjoy.

The devices we propose will not only be the base of water management infrastructure for the whole new town but will also provide a public "cooling effect" as well as "playgrounds" introducing life into the landscape. There will be drinkable water and sprinkles to cool the Runway promenade along the way.

Let's zoom into four of these devices.

THE STEPPING WATER BASIN

The stepwells are a traditional heritage of the Indian culture. Reminiscent of the Ghats from the culture of the Ganges River, the stepping geometry we propose for this section of the runway is designed to accommodate the large fluctuation in the volume of water from the rain season to the dry one. This section of the transformed runway allows users, at any moment of the year, accessibility and proximity to water. The stair is therefore a generous public space that stimulates active public interaction.

THE PALM GROVE

The palm grove flourishes over an irrigation system designed according to the liquid principle of the communicating vessels. The water flows from the main canal to a capillary system of interlaced spillways that bring the water to the palms bases. The shade offered by the plants welcomes the public to a fresh natural-artificial landscape. The palm grove thus provides the coolest spot along the transformed runway's climate.

THE FOUNTAIN

The fountain is situated at the very centre of the runway and the proposed developments. The right border of the basin, towards the mangrove, recalls the geometry of an amphitheatre. Here the public can sit to enjoy water plays, the breeze and vapour that the fountain creates. The Fountain thus becomes the symbolic centre of the future new town.

THE OPEN-AIR NATURAL SWIMMING POOL AND THE PHYTO DEPURATION

The Olympic swimming pool is the active spot of the transformed runway's infrastructure. Since no chemicals are needed for the maintenance of the natural swimming pool, the depuration of the exhausted water passes through a series of plants basins. The phyto depuration cleans the water, which will continue its way to the end of the infrastructure and further up toward the Mangrove.