

1st Prize, Topic 2 Open Category

Horizon

Formwerkz Architects

Swee Yew Yong

ID Architects

Stephan Shen Yizhe

AWP Architects

Dang Bao Bao

JURY CITATION:

The jury commended the scheme for being bold and innovative in conceiving a different spatial dimension to the runway. By multiplying the presence of the runway vertically, a porous and layered vertical lattice structure is created that allows many new programs to be inserted. The scheme is also practical in retaining the existing runway as a structural foundation, instead of proposing to excavate it. The new proposed programmes tickle the imagination, while the powerful imagery inspires new ideas for the runway.

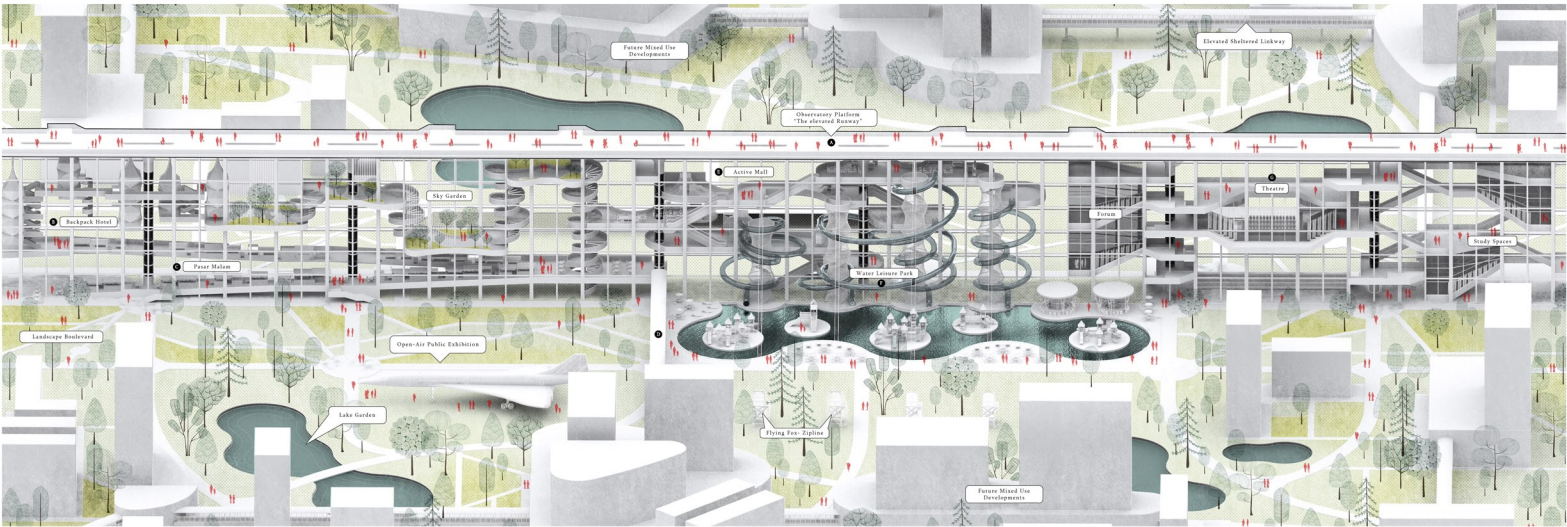
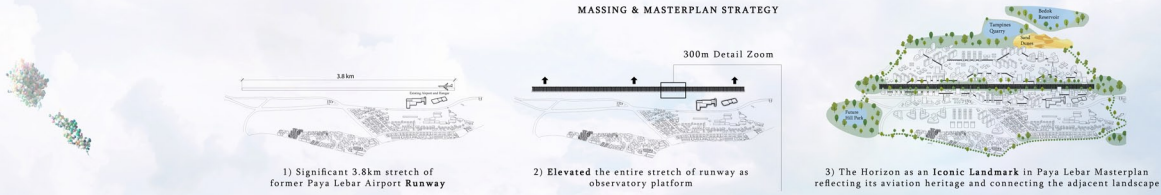
Taking into consideration the biodiversity network that will be developed around the airbase and the variety of skyline views surrounding Paya Lebar district, our proposal aims to re-invent the runway into an elevated memorial walkway cum multi-purpose community space. Adopting a hedonistic approach in design, the proposed intervention is envisioned to be Singapore's next nature landmark, brimming with exciting public amenities and programs while paying homage to the site's former identity as an airport runway.

Lifted 30m above ground along the entire 3.8km, the viewing platform is essentially a projection of the runway upward, supported by steel lattice structure and connected to the ground level through a network of different vertical circulations. Hovering on top of the surrounding tree lines during the day and illuminating brilliantly at night, the platform is constantly recognizable, making it the new iconic landmark of the district. The thin and slender proportion of the steel lattice allows it to be seemingly invisible amidst the surrounding greenery, yet provide sufficient structural support to accommodate multiple levels of amenities and programs. Ranging from pasar malam, cafe, to backpack hotel, theatre, water park... the lattice offers endless possibilities for new fun-inducing activities to be added over time as the surrounding neighborhood and infrastructure network become more developed. This growing array of public spaces is directly connected to each other and to the memorial walkway above through various means of ascending and descending such as ramps, staircases, escalators, slides, and lifts. Designed like sculptural objects in a garden, these vertical circulations serve to bring people across multiple levels of the lattice while at the same time simulating the various taking off and landing experience, making the act of travelling up and down an exciting and fun-filling activity itself.

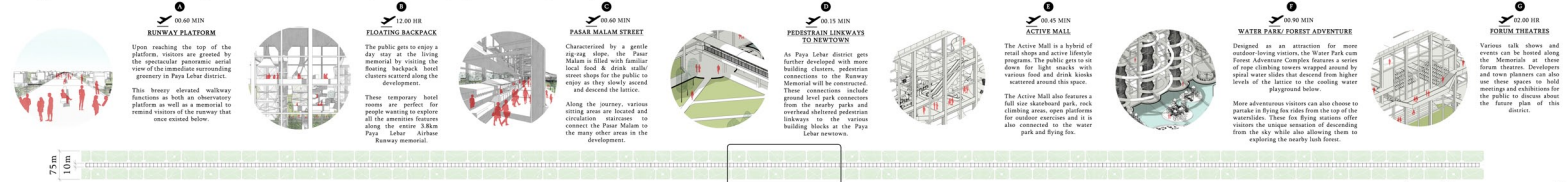
Upon reaching the top of the platform, visitors are greeted by the spectacular panoramic view of the immediate surrounding greenery and the far away city skyline/ sand quarry. The extreme linearity of the walkway - devoid of any form of visual obstruction - is a symbolic gesture to remind visitors of the runway that once existed below. This memorial walkway constitutes the final destination of the journey but it might also be the beginning of a grander adventure. As they gaze into the infinite horizon, visitors are instantly reminded of where they are and ponder on the next destination - like the sensation a passenger has when the plane re-emerges from a cloudy sky, and the city Horizon once again becomes visible.

The Horizon is thus a living memorial, embodies not only the recollection of Paya Lebar airbase's past legacy but also that of countless more generations to come. The re-invented runway is a thriving place for both human and nature, bustling with exciting programs for people of all backgrounds. And even as time passes by, visitors will keep arriving at this destination for although the airplanes are no longer present, the runway will always be there, ready to fly them off to new memory lanes.

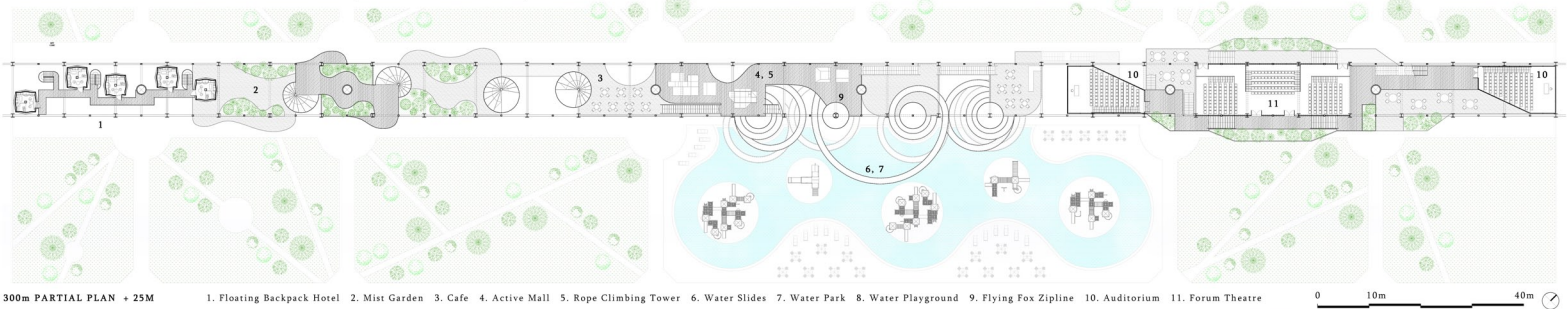
MASSING & MASTERPLAN STRATEGY



300m Typical Module Axonometric: Populate the lattice structure through insertion of programs: The Living Runway Memorial



OVERALL 3.8KM RUNWAY SCHEMATIC PLAN: The elevated runway lattice framework and landscape



300m PARTIAL PLAN + 25M

"Upon reaching the top of the platform, visitors are instantly reminded of the sensation when the plane re-emerges from a cloudy sky - and the city once again becomes visible over the Horizon."



PARTICIPANTS' WRITE UP:

The Horizon: A Living Memorial to Commemorate the Aviation Memories of All People, All Ages, All Culture and All Creeds

Taking into consideration the biodiversity network that will be developed around the airbase and the variety of skyline views surrounding Paya Lebar district, our proposal aims to re-invent the runway into an elevated memorial walkway cum multi-purpose community space. Adopting a hedonistic approach in design, the proposed intervention is envisioned to be Singapore's next nature landmark, brimming with exciting public amenities and programs while paying homage to the site's former identity as an airport runway.

Lifted 30m above ground along the entire 3.8km, the viewing platform is essentially a projection of the runway upward, supported by steel lattice structure and connected to the ground level through a network of different vertical circulations. Hovering on top of the surrounding tree lines during the day and illuminating brilliantly at night, the platform is constantly recognisable, making it the new iconic landmark of the district. The thin and slender proportion of the steel lattice allows it to be seemingly invisible amidst the surrounding greenery yet provides sufficient structural support to accommodate multiple levels of amenities and programs. Ranging from pasar malam, cafe, to backpack hotel, theatre, water park..., the lattice offers endless possibilities for new fun-inducing activities to be added over time as the surrounding neighbourhood and infrastructure network become more developed. This growing array of public spaces is directly connected to each other and to the memorial walkway above through various means of ascending and descending such as ramps, staircases, escalators, slides, and lifts. Designed like sculptural objects in a garden, these vertical circulations serve to bring people across multiple levels of the lattice while at the same time simulating the various taking off and landing experiences, making the act of travelling up and down an exciting and fun-filled activity itself.

Upon reaching the top of the platform, visitors are greeted by the spectacular panoramic view of the immediate surrounding greenery and the far away city skyline/ sand quarry. The extreme linearity of the walkway - devoid of any form of visual obstruction - is a symbolic gesture to remind visitors of the runway that once existed below. This memorial walkway constitutes the final destination of the journey, but it might also be the beginning of a grander adventure. As they gaze into the infinite horizon, visitors are instantly reminded of where they are and ponder on the next destination - like the sensation a passenger has when the plane re-emerges from a cloudy sky, and the city horizon once again becomes visible.

The Horizon is thus a *living memorial*, embodying not only the recollection of Paya Lebar airbase's past legacy but also that of countless more generations to come. The re-invented runway is a thriving place for both human and nature, bustling with exciting programs for people of all backgrounds. And even as time passes by, visitors will keep arriving at this destination for although the airplanes are no longer present, the runway will always be there, ready to fly them off to new memory lanes.