

2<sup>nd</sup> Prize, Topic 1 Open Category

## The Runway “Kris”

### MIX Design Studio

Stanley Lung Wai Cham

Kai Xu

Ziqing Li

Yu Hao

Lei Chai

Hao Wang

Nianxing Liao

Zhanbo Ma

Tao Wang

Zhuomecao Liang

Shuangxi Yang

Fangwei Wang

#### JURY CITATION:

The jury singled out this scheme for its unique multiple linear organising structure taking inspiration from the existing runway. Districts are focused along these linear parks to leverage fully the prevailing wind directions to create highly liveable and attractive environments. These multiple runways are green spaces designed with different uses and characters to give varied experiences and a strong distinctiveness to the town.



# The Runway "Kris"

## Wovening Future Community with Themed Parkways

### Design Concept: From Static-city to Fluid-city

Runway "Kris" is the design concept of the Paya Lebar Airbase Runway Master Plan. The overall design idea has reinforced the genius loci of the airbase runway itself and inspired by the aerodynamics (flow, movement and force) that are generated from the aircrafts landing and take-off, vehicle taxiing and moving, machines loading and operation, equipment automation, wind and sound of climate, as well as human circulation pattern as the primary aspiration.

The vision of the Paya Lebar master plan is to transform a "Static-city" to become a "Fluid-City", where these confluent and integration of airframe-structure layers, convergence and divergence of spatial organizations, crossroad and crisscrossing of building developments are weaving together and forms a unique "Kris" pattern and a dynamic master plan layout that can capture the site's character and spirit, capture the industrial essence and atmosphere, extend the legacy and memories of the Paya Lebar Airbase in order to link the past, present and future together.

### Land-Use Formation: From Square Block to Diamond

Based on varies existing site condition and designed parameters, the spatial configuration of "Kris" master plan for Paya Lebar is derived from a series linear runway parks which intersect with a diamond shape work system, generating a series of slowly blade-like flowing lines that flies through the site and merges between program nodes and gathering places.

Rather than using a conventional square grid and rectangular blocks, the master plan layout has adopted an innovative transversal grid and diamond plots as the new land-use formation. This diamond shape linear building plot demonstrates movements, flows and sequences are translated directly into the physical planning and building form where streamline communities, swift corridors, triangular openspaces, diamond plots, diagonal connectors and linear building developments are created, fostering a new lifestyle as a new paradigm shift for future living.

### Openspace Configuration: From Endless Runways to Linear Parkways

The "Kris" master plan is composed with 9 Themed Parkways oriented in north-south direction:

- 1) Runway Pride: cultural spine, festival axis, agora marketplace, national parade, marching;
- 2) Leisure Parkway: park connectors, urban plaza, tree line shades and commercial complex;
- 3) Museum Parkway: open-air museum, fighter jets promenade, popup retail pedestrian street;
- 4) Technology Parkway: interactive installation, temporary structure, heritage tech-complex;
- 5) Recreation Parkway: sports fields, activity courts, children's playgrounds, and bicycle lanes;
- 6) Forest Parkway: green oasis, natural habitat, rainforest jungle, elevated path and tower;
- 7) Meadow Parkway: sea of flowers, flora patches, butterfly gardens, fragrance terraces;
- 8) Water Parkway: naturalized reservoir, lake pond, wetland park, floating island, urban beach;
- 9) Agriculture Parkway: rice fields, community gardens, rooftop farms, and urban greenhouse.

These linear runway parks and promenades function as continuous denominator, providing each streamlined community with unique character of openspace at doorstep, integrating with a series of intermediate place-making spaces for leisure, sport, recreation and culture activities.



### LEGEND:

- |                         |                         |                         |
|-------------------------|-------------------------|-------------------------|
| 01) Runway Pride        | 16) River Embankment    | 31) Bedok Reservoir     |
| 02) Leisure Parkway     | 17) Pedestrian Walkway  | 32) Eco-Islands         |
| 03) Museum Parkway      | 18) Mixed-Use Complex   | 33) Research Laboratory |
| 04) Technology Parkway  | 19) Urban Plaza         | 34) Urban Beach         |
| 05) Recreation Parkway  | 20) Park Connectors     | 35) Retail Shopping     |
| 06) Forest Parkway      | 21) Future Logistic     | 36) F&B Promenade       |
| 07) Meadow Parkway      | 22) HDB Development     | 37) Pedestrian Street   |
| 08) Water Parkway       | 23) HDB Development     | 38) Festival Green      |
| 09) Agriculture Parkway | 24) Elevated Footbridge | 39) Commercial Office   |
| 10) Former Airport      | 25) Education Complex   | 40) HDB Development     |
| 11) Festival Lawn       | 26) Wetland Parks       | 41) HDB Development     |
| 12) Transit Terminal    | 27) University Campus   | 42) Future Production   |
| 13) Future Workshop     | 28) Urban Farms         | 43) Bartley Road East   |
| 14) Museum Complex      | 29) Tampines Boat Pier  | 44) Tampines Road Ave   |
| 15) Kaki Bukit District | 30) Lakeloft Platform   | 45) Tampines Expressway |



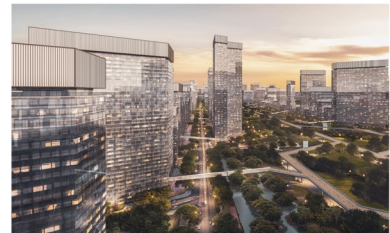
Runway #02: Leisure Parkway for commercial and retail activity



Runway #06: Forest Parkway for natural habitats and green oasis



Runway #03: Museum Parkway for outdoor art display and exhibit



Runway #07: Meadow Parkway for fragrance and botanical gardens



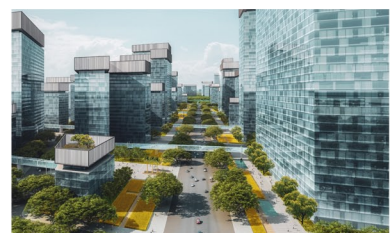
Runway #04: Technology Parkway for future production and workshop



Runway #08: Water Parkway for boating, sunbathing and swimming



Runway #05: Recreation Parkway for sportfield and active playground



Runway #09: Agriculture Parkway for community garden and farming



## PARTICIPANTS' WRITE UP:

### The Runway "Kris": Weaving Future Community with Themed Parkways

#### **Design Concept: From Static-city to Fluid-city**

The overall design idea reinforces the genius loci of the runway, inspired by aerodynamics (flow, movement and force) generated from aircraft landing and take-off, vehicle taxiing and moving, machines loading and operating, equipment automation, wind and sound of climate, as well as human circulation patterns.

The vision of the Paya Lebar master plan is to transform a "Static-city to become a "Fluid-city", where through the confluence and integration of infrastructure layers, convergence and divergence of spatial organizations, crossroads and criss-crossing of developments, they are woven together to form a unique "Kris" pattern. This dynamic master plan layout captures the site's character and spirit, the industrial essence and atmosphere, extending the legacy and memories of the Paya Lebar Airbase to link its past, present and future together.

#### **Land-Use Formation: From Square Block to Diamond Plots**

Based on various site conditions and design parameters, the spatial configuration of "Kris" master plan for Paya Lebar is derived from a series of linear runway parks which intersect with a diagonal network system, creating a series of wavy blade-like flowing lines that flies through the site and merges at program nodes and gathering places.

Rather than adopting a conventional square grid and rectangular blocks, the master plan layout adopts an innovative transversal grid and diamond plots as the new land-use formation. These diamond-shape plots demonstrate movements, flows and sequences, and this is translated directly into the physical planning and building form with streamlined communities, swift corridors, triangular open spaces, diamond plots, diagonal connectors and linear building developments created, fostering a paradigm shift for future living.

#### **Open space Configuration: From Endless Runways to Linear Parkways**

The "Kris" master plan is composed with 9 Themed Parkways oriented in north-south direction:

- 1) Runway Pride: cultural spine, festival axis, agora marketplace, national parade, marching;
- 2) Leisure Parkway: park connectors, urban plaza, tree line shades and commercial complex;
- 3) Museum Parkway: open-air museum, fighter jets promenade, pop-up retail pedestrian street;
- 4) Technology Parkway: interactive installation, temporary structure, heritage tech-complex;
- 5) Recreation Parkway: sports fields, activity courts, children's playgrounds, and bicycle lanes;
- 6) Forest Parkway: green oasis, natural habitat, rainforest jungle, elevated path and tower;
- 7) Meadow Parkway: sea of flowers, flora patches, butterfly gardens, fragrance terraces;
- 8) Water Parkway: naturalised reservoir, lake pond, wetland park, floating island, urban beach;
- 9) Agriculture Parkway: rice fields, community gardens, rooftop farms, and urban greenhouse.

These linear runway parks and promenades function as continuous denominator, providing each streamlined community with unique open space at their doorstep, integrated with a series of place-making spaces for leisure, sport, recreation and culture activities.