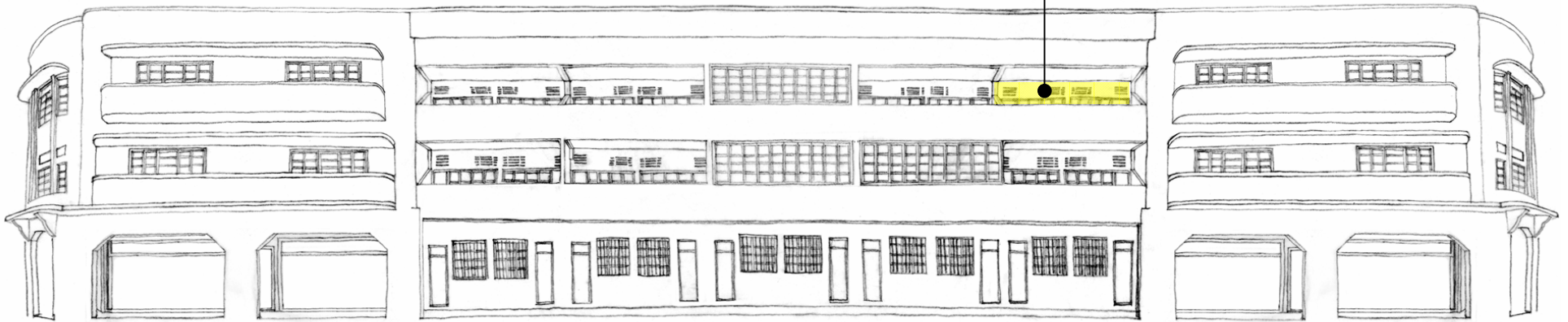


# TIONG BAHRU PREWAR SIT BLOCKS

## Allowable Treatment of Recessed Facade

⑤ Recessed Facade



**Option A:** Retain configuration of 1 door and 3-leaf casement (mild steel or aluminium frame) windows of original design (anodised or powder-coated)



**Option B:** Full-height aluminium / mild steel-frame doors (anodised or powder-coated). Casement, sliding, and sliding-folding doors are allowed.