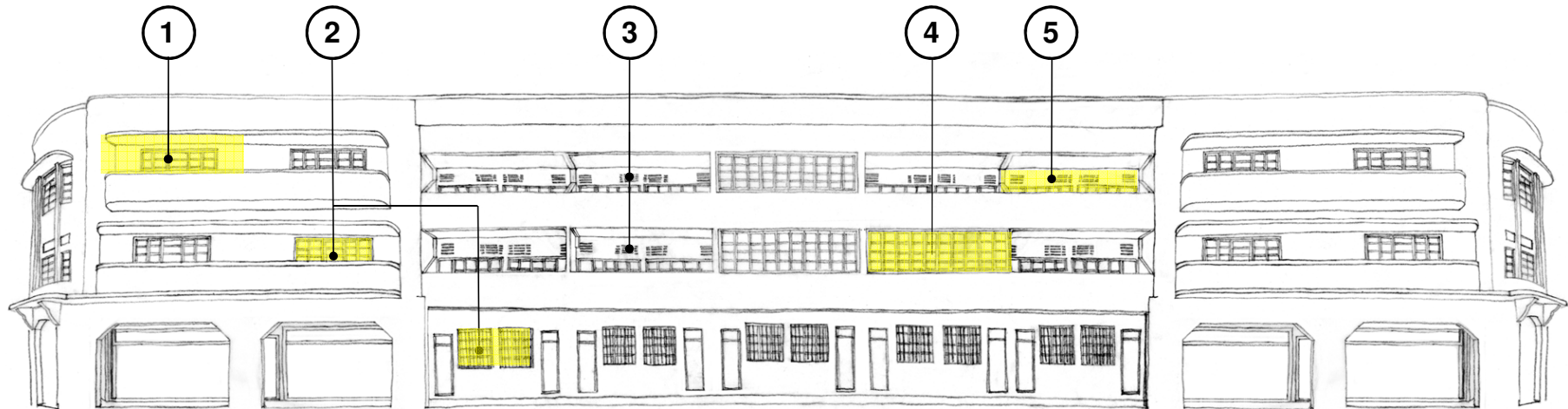


## CONSERVATION GUIDELINES FOR APARTMENT OWNERS AT PRE-WAR SIT FLATS (TIONG BAHRU CONSERVATION AREA)



### 1 PROTRUDING BALCONY

Existing protruding balconies (found at Blocks 57, 59, 66, 73, 76 & 81) are to be kept open.

### 2 WINDOWS ON FAÇADE

The buildings originally have mild steel framed glazed casement windows. If an owner wishes to replace them, the proportion of the new windows shall match that of the original windows of the block. The new windows shall be mild-steel, or powder-coated aluminium frames with glazed infills.

### 3 VENTS

Vents are to be kept. They may be sealed on the interior with plasterboard, glass, or perspex.

### 4 WINDOWS AT BALCONY

The design of the balconies are originally open. If an owner wishes to enclose the balcony with new windows, the proportion of the windows shall match that of the original windows of the block. The new windows shall be mild-steel, or powder-coated aluminium frames with glazed infills.

### 5 RECESSED FAÇADE

The original recessed façade at the balcony is to be kept. Alternatively, full-height doors at the recessed façade may be allowed (please see guidelines on recessed façade)

### **AWNINGS, PLANTER RACKS & AIR-CON UNITS**

*New awnings and planter racks are not allowed at the front façade. Air-con units should not be hung on the front façade except at selected corner units which do not have frontage at the rear (located at Blocks 55, 56, 58, 64, 65, 72, 74, 75, 77, 79, 80, 81 & 82 - please refer to detailed A/C guidelines)*

### PURPOSE OF LEAFLET

This leaflet provides a general guide for homeowners at the conserved pre-war SIT blocks at Tiong Bahru. Homeowners at these units are required to apply to HDB for a home renovation permit and to seek clearance from URA for works affecting the building façade.

### PRE-WAR BUILDING FAÇADE RESTORATION GUIDELINES



OUR MISSION **S**ingapore a great city to live, work and play

DATE PREPARED: NOV 2009

Please email or call URA Conservation Dept (ura\_conservation\_cso@ura.gov.sg, 63293355) if you need further clarification