



Space For Our Dreams

Join Our Long-Term Plan Review

Public Engagement Workshop Toolkit

Who: Everyone who is interested to join Long-Term Plan Review

What: This toolkit will guide you through an exploration of how we plan our city for live, work and play, and invite you to discuss and contribute ideas as we plan for the future. We hope you can partner with us and enable more people to join our Long-Term Plan Review.

Why: Planning Singapore together - we want to hear from as many people as possible, with different backgrounds and lived experiences, as we develop our strategies for the long-term.

When: To ensure your conversation shapes the Long-Term Plan of Singapore, submit your ideas to us by end of Feb 2022.

The content in this deck of slides is subjected to our copyright, do run a check with us by emailing us at URA_LTPR@ura.gov.sg, should you want to share it publicly or re-produce it for other uses. Thank you for your understanding!

WHAT THIS TOOLKIT CONTAINS:

Select chapter(s) of toolkit that is/are of interest to you:

For facilitators to prepare for a discussion using this toolkit
(Duration: 15mins)

0

Pre-Event

Familiarise yourself with the content of this toolkit and the Facilitation Kit. Get ready with toolkit and template to capture ideas

Read to find out more about LTPR
(Duration: 15mins)

1

Understand Our City & Long-Term Plan Review

Begin with some reflections on our City and the role of the Long-Term Plan

+

Additional Reading Materials

Discuss and share your thoughts with us!
(Duration: 20mins per topic)

2

Discuss Our Future

Discuss your ideas with your group

3

Submit Your Ideas

Document your ideas and submit the template via Form SG link

For the social media influencers!
Share with your friends!

4

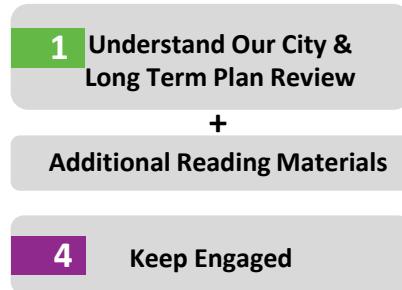
Keep Engaged

Share relevant information and resources, follow for more info e.g. on social media #LTPR2021

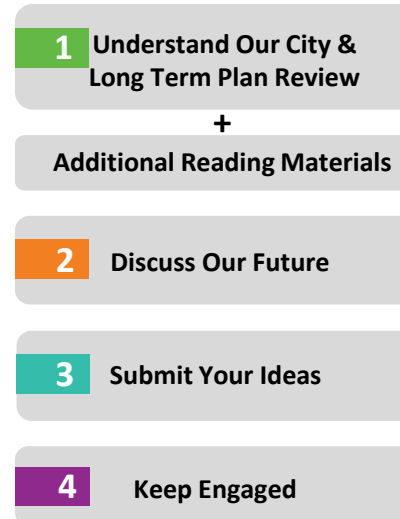
HOW IT WORKS:

If you would like to know more about what the Long-Term Plan Review is about

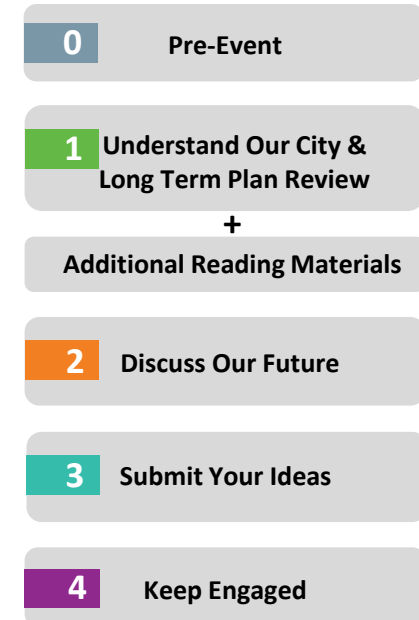
If you would like to share about the Long-Term Plan Review on social media platforms



If you would like to contribute ideas to this conversation as an individual

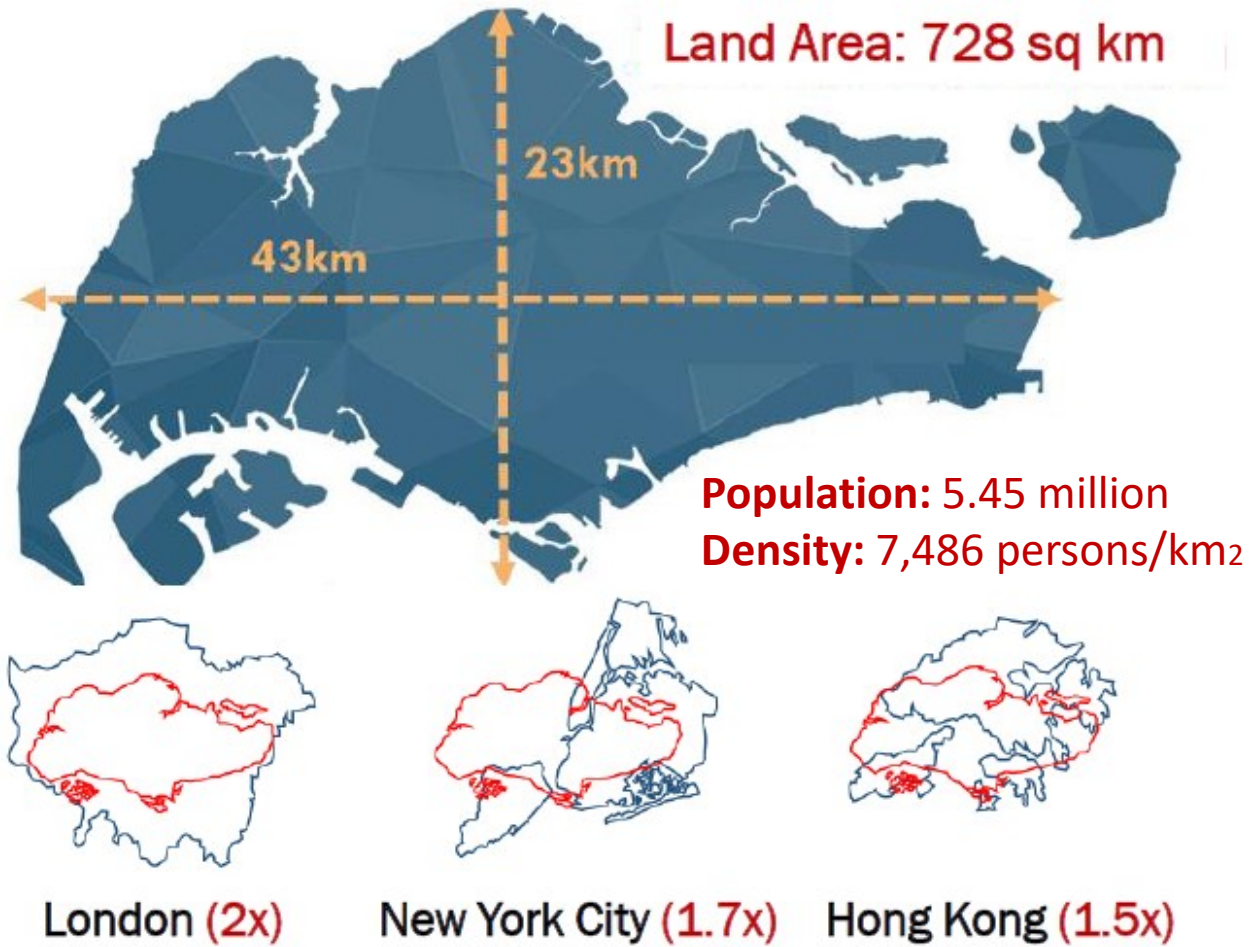


If you would like to facilitate this conversation and contribute ideas with a group



1 Understand Our City & Long-Term Plan Review

Singapore is an island city-state



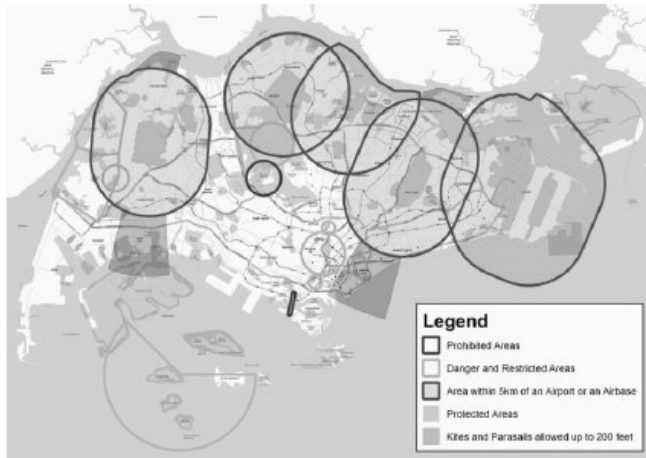
We are a small island that needs to accommodate many different needs...



1 Understand Our City & Long-Term Plan Review

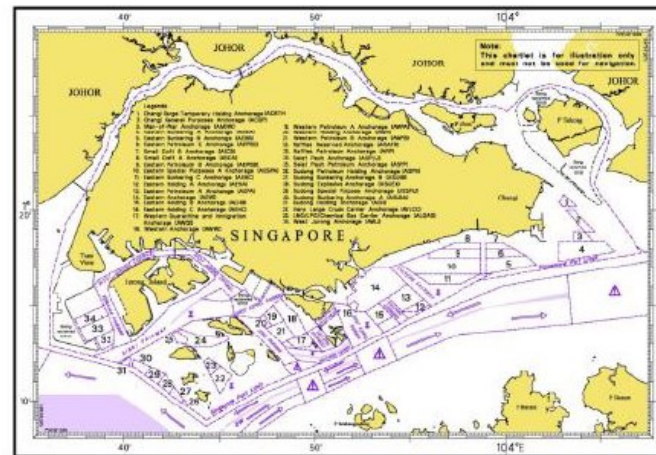
... and there are many factors that we have to consider in our land use planning.

Height Constraints



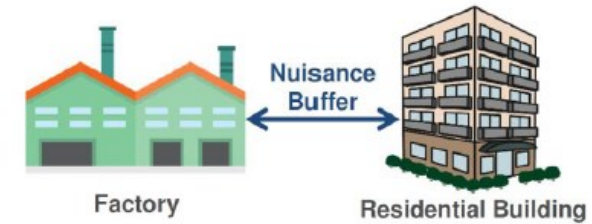
Source: <https://www.caas.gov.sg/public-passengers/aerial-activities>

Anchorage



Source: <http://www.mpa.gov.sg/web/wcm/connect/www/6e290f3d-d3c5-435b-ae5a-8f734451feba/anchorage12.jpg?MOD=AJPERES>

Health & Safety, Noise and Nuisance buffers



1 Understand Our City & Long-Term Plan Review

This allows us to develop sustainably by balancing economic, social, environmental and land use considerations, and to meet our needs today while providing options for future generations



ECONOMIC

Sustain a robust and vibrant economy

SOCIAL

Provide a good quality of living and a sense of well-being for all

ENVIRONMENT

Develop in an environmentally responsible manner

LAND & SEA

Optimise our limited land and sea space

Our long-term plans map out broad land uses and guide development for the next 50 years and beyond

Laid the foundation of our city today, and shaped Singaporeans' living environments and way of life



The long-term plans are reviewed every 10 years to ensure relevance amidst changing trends, needs and aspirations

1 Understand Our City & Long-Term Plan Review

To work towards a sustainable, adaptable and resilient city of the future, we must be ready for the impacts of climate change...

Ensuring Thermal Comfort



Vertical greenery at Tree House. © Finbarr Fallon

Strategies to maintain thermal comfort include:

- Using microclimatic modelling tools in the planning of new residential towns and estates to strengthen key wind corridors, optimise building layout and orientation for better natural ventilation, and identify potential hotspots for enhanced greenery placement
- Increasing our vegetation cover by setting aside land for parks and nature areas, incorporating roadside planting, as well as requiring new developments in high footfall areas to incorporate minimum greenery replacement areas
- Researching new strategies under the Cooling Singapore initiative



Vertical growth system developed by Sky Greens Pte Ltd

Strengthening Food Security

- The impact of climate change is also expected to cause widespread declines in crop yields of up to 25% by 2050 globally. By importing over 90% of our food supply, Singapore is exposed to the volatilities of the global food market.
- One key strategy being adopted to strengthen our food security is to boost our “grow local” basket, to reduce our reliance on food imports. Our aim is to build up our capability and capacity to increase our local food production.
- In order to achieve the target while optimising land, modern high-tech farms such as Sky Greens are increasingly adopting innovative technologies to intensify production.

1 Understand Our City & Long-Term Plan Review

To meet the increasing demands, new ideas are being explored to close our resource loops and reduce the amount of resources consumed...

Moving Towards More Energy-Efficiency and Cleaner Energy

Solar Panels at Tengeh Reservoir: Using new ways to harness solar energy like installing solar panels on our reservoirs helps overcome our land constraints.



© PUB, Singapore's National Water Agency

Joining global efforts to address climate change, Singapore has pledged to reduce emissions intensity by 36% from 2005 levels by 2030 by:

- increasing energy efficiency, and
- moving towards renewables and cleaner fuel



By adopting a circular approach, resources can be recovered and reused at the end of a product's life, thus reducing the consumption of resources and generation of waste.

Towards Zero Waste

© National Environment Agency

- At the current rate of waste disposal, Semakau Landfill is expected to run out of space by 2035. Hence, to lengthen its lifespan, we will aim for a higher recycling rate of 70% (up from 61% in 2017) to divert waste away from the landfill.
- The amount of food waste generated in Singapore has increased by about 40% over the last 10 years. Food waste comprises more than 20% of waste disposed in Singapore. To minimise the incineration of food waste, they will be segregated from other waste and treated separately from 2024.
- At Our Tampines Hub, food waste is already segregated and converted into non-potable water and compost for use at its rooftop garden!

1 Understand Our City & Long-Term Plan Review

Innovative strategies are employed to optimise space to meet our growing needs!

Underground Space Use



- Siting uses such as utility plants underground frees up precious land for multiple uses. For example, placing a 230kV substation underground frees up more than 3 hectares of land for other uses.
- We have started to develop more detailed plans for how to optimise our underground space, in 3 key districts - Marina Bay, Jurong Innovation District and Punggol Digital District.
- This is to ensure underground uses are coordinated across developments (e.g. to link up underground pedestrian connections and car parks), and are well-integrated with above ground land uses.



Photo by DP Architects

Co-location

- To save valuable space, co-locating compatible recreational and community uses improves convenience, like at Our Tampines Hub. In addition, co-locating 3 MRT depots and 1 bus depot at the upcoming East Coast Integrated Depot saves a massive 66 football fields of land.

1 Understand Our City & Long-Term Plan Review

To foster liveable and inclusive communities, more variety of housing options with community-centric designs and accessible amenities will be provided.

Lifecycle Planning of Towns to Respond to Changing Needs



- As the population in housing estates evolves, the amenities provided must also respond to meet their changing needs.
- Using data analytics, future demand for childcare and senior care are projected, and current facilities are assessed for conversion to meet changing needs. This valuable data helps in the planning process, meeting the needs of an evolving demography



From being closer to nature at Tengah, living by the waterfront at Punggol, staying at city fringes in Queenstown, or trying out new housing concepts at Kampong Bugis, there will be more housing options to suit residents' preferred lifestyles.

Providing More Housing Options to Choose From

- New towns are planned and designed with technology as enablers to bring convenience and nature closer to residents, for their well-being. Some housing developments will be integrated with urban greenery and roof gardens, for example Punggol Northshore HDB development.
- Well-connected public spaces and amenities will help to create new housing towns that serve the diverse needs of all residents. To create more inclusive environments that encourage walking and cycling, precincts are designed to be car-lite, prioritising the movement of people over cars whenever possible.

1 Understand Our City & Long-Term Plan Review

Residents will have more opportunities to connect with nature, enjoy a wide variety of recreational experiences and experience our biophilic City in a Garden.

This newly-created plaza within Paya Lebar Quarter is a public space for visitors to enjoy.

Creating Endearing Spaces



- To create spaces that connect people and foster stronger relationships among the community. Well-designed, quality public spaces let people interact, linger, or just enjoy the ambience, and contribute to creating memorable experiences.
- URA has been working with building owners and architects to incorporate such spaces as part of their developments.



Jurong Spring © Sport Singapore

Bringing More Play Options into the Community

- Sports and active living for all age groups makes our nation truly alive. To encourage more outdoor play with nature, new playscapes based on the concept of biophilia will be progressively provided in existing and upcoming parks.
- More sports and recreational facilities will be sited nearer to homes through the innovative use of existing facilities under the Sports-in-Precincts programme.
- There are now more than 300 sports facilities that are part of the Dual-Use Scheme, which opens up school facilities for public use, with another 200 to be opened by 2020.

1 Understand Our City & Long-Term Plan Review

To retain our identity and sense of home, we work closely with communities to retain the distinctive qualities of local identity areas...

Retaining & Enhancing Local Identity



- URA works with communities to retain the distinctive qualities of local identity areas through setting design guidelines for existing and new developments, and retaining key elements.
- These local identity areas are also being rejuvenated with new public spaces, upgraded streetscapes, or sensitive injection of new homes and amenities.
- For example, new homes and facilities will rejuvenate Dakota Crescent Estate while its well-loved playground and the surrounding six blocks are retained.



Jurong Town Hall, a National Monument, now houses trade associations and chambers, and continues to support Singapore's economic growth.

Protecting & Rejuvenating Built Heritage

- The built heritage that URA and the National Heritage Board helped protect over the last 30 to 40 years showcases our nation's history and progress, fosters a stronger national identity and adds a distinct Singaporean character.
- Working in partnership with building owners and local communities, our built heritage is kept for future generations and given a new lease of life through sensitive adaptive re-use.

1 Understand Our City & Long-Term Plan Review

Gateways and business nodes are consistently growing to be more vibrant and delightful.

The Central Area



- The Central Area stands as Singapore's dynamic city centre - home to a global business and financial hub, and a vibrant 24/7 lifestyle destination.
- The area will continue to grow and become even more vibrant, by accommodating a wider diversity of uses and more jobs and business opportunities for the future economy.
- More city living options nearer to amenities are being planned too, with delightful streets and public spaces that celebrate our rich cultural, heritage and green assets.



© JTC Corporation

- Established employment centres will be refreshed with new opportunities for business and industrial activity.
- The innovation cluster at one-north, Singapore Science Park and the National University of Singapore (NUS) will be complemented by the new Dover Knowledge District, which will offer vibrant spaces for better integration of education, R&D, economic and entrepreneurial activities.

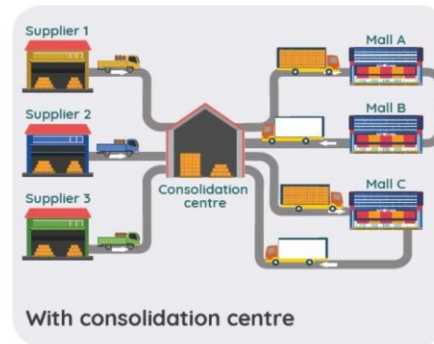
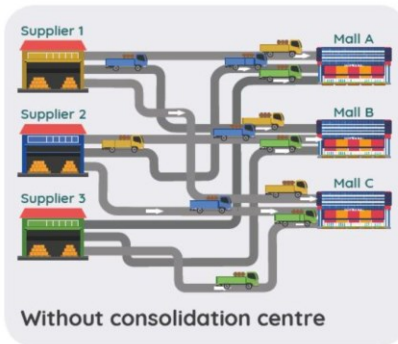
New developments are also being introduced to the mature industrial estates of Tengah and Tanjong Kling including The JTC MedTech Hub @ MedTech Park and Facebook Data Centre.

Revitalising Established Business Nodes

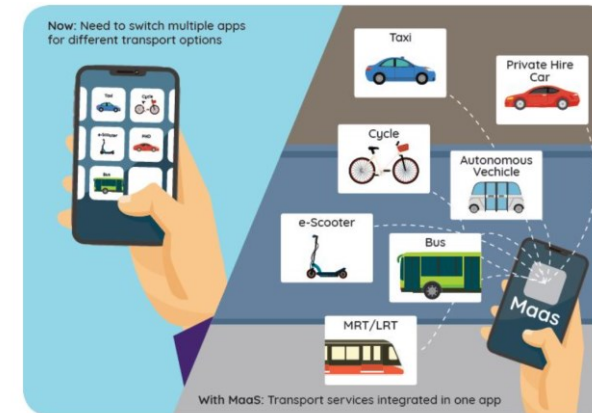
1 Understand Our City & Long-Term Plan Review

Moving around Singapore will be even more convenient and pleasant!

More Efficient Goods Delivery



- A well-designed urban logistics system is critical for a highly urbanised city like Singapore. If the system is efficient, less resources would be needed and fewer vehicles would be moving on roads, making the city more liveable and sustainable.
- New goods delivery business models and solutions such as Consolidated Logistics and Locker Alliance Network can help reduce road congestion as goods deliveries are consolidated and optimised. This will be even more important with the rise of e-commerce.



Commuters can look forward to new mobility concepts such as Mobility as a Service (MaaS) and technologies such as Autonomous Vehicles for a more efficient commuting journey.

More Choices for Efficient Commute

Mobility as a Service integrates various forms of transport options and services into a single platform that commuters can access via an app on their mobile devices to plan for their journeys. It allows commuters to enjoy:

- Customised trips based on individual preferences,
- More seamless journeys, and
- Quick and easy payment for multiple trips

1 Understand Our City & Long-Term Plan Review

**We have a challenging task ahead –
our operating environment is increasingly uncertain and complex.**



Address rising aspirations amidst ageing, smaller households



Compete economically in a fast-changing world



Reduce, Reuse, Recycle
(e.g. water, energy, waste)



Adapt to climate change



Be resilient; prepare for crises



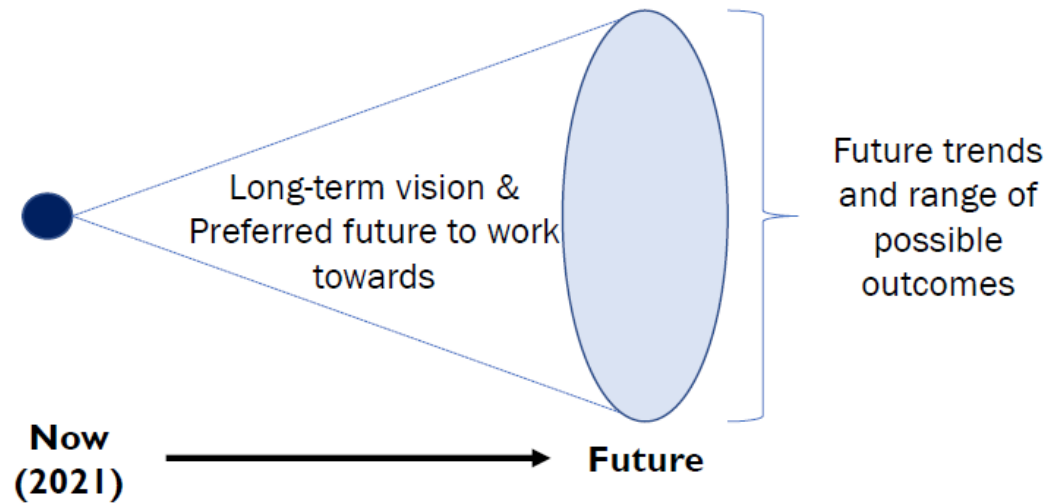
Respond to technological advancements

1 Understand Our City & Long-Term Plan Review

It will be increasingly challenging to cater to our needs within our limited space



URA aims to develop robust plans that can adapt to fast-evolving needs and unexpected circumstances while providing future generations with options



Through the LTPR, we want to have a conversation on how to cater for the different needs, better prepare for the future, while balancing the different trade-offs

2 Discuss Our Future

Every decade, URA seeks inputs from the public to review the long-term plans for the country



LTPR21 is our chance to envision the future of Singapore, 50 years from now

URA is having a year-long public engagement exercise to hear your ideas as part of the Long-Term Plan Review



HEARING YOUR VIEWS

The online poll for first phase of engagement has closed. The findings will be shared during later stage of the public engagement exercise



SHAPING A COLLECTIVE VISION

Focus group discussions with the public and stakeholders will be held to discuss views at a deeper level and set out a collective vision for Singapore



OUTLINING LAND USE STRATEGIES

URA will incorporate the findings into possible land use strategies and discuss how to refine them together with you



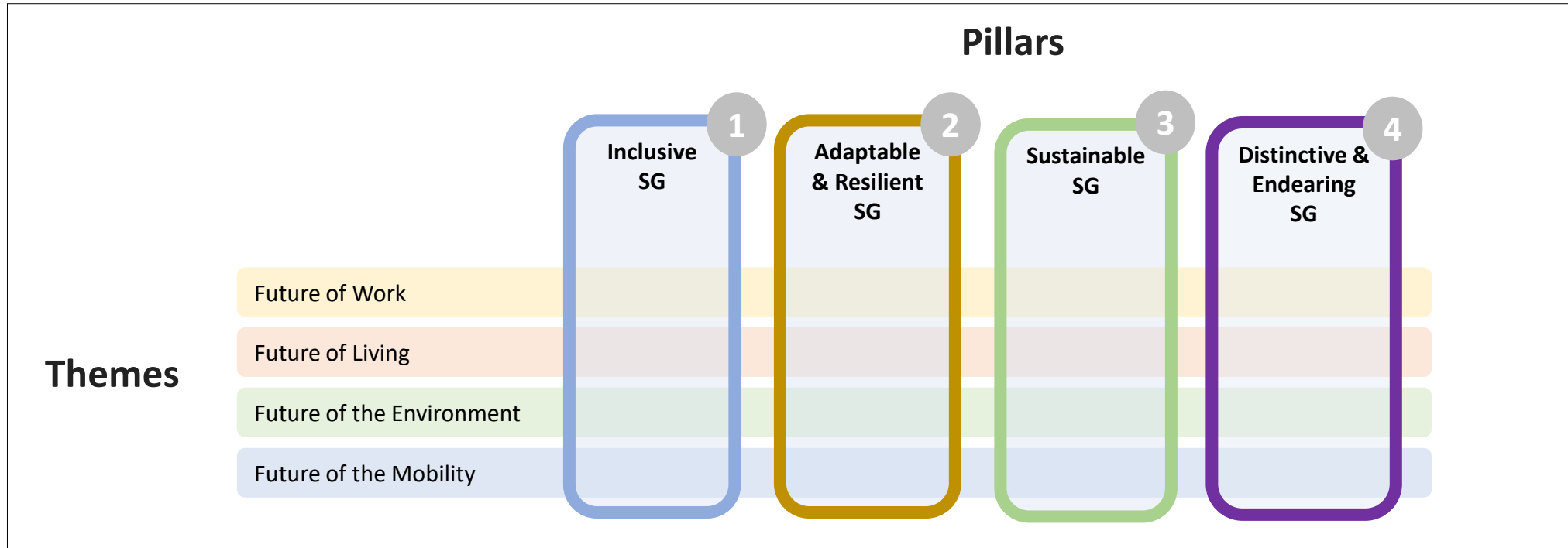
INTEGRATING STRATEGIES INTO PLANS

URA will integrate the land use strategies into our Long-Term Plans, which will be presented to the public for feedback

With your participation, we can shape a future Singapore that will better meet your needs and aspirations as well as those of future generations



We want your views on what you think should be the land use planning strategies we should consider for long-term!





Let's discuss these questions:

1. What does inclusive/sustainable/adaptable & resilient/distinctive & endearing mean to you in terms of the a. future of work, b. the future of living, c. the future of the environment and d. future of mobility?
2. Which are the type of spaces/facilities that you think we should have more/less/change to make SG more inclusive/sustainable/adaptable & resilient/distinctive & endearing? *(Discuss Strategies)*
3. Given our limited land, what are some creative solutions to balance our needs to make Singapore more inclusive/sustainable/adaptable & resilient/distinctive & endearing? *(Discuss Trade-offs)*



Inclusive SG

Let's discuss these questions:

1. What does inclusive mean to you in terms of the a. future of work, b. the future of living, c. the future of the environment and d. future of mobility?
2. Which are the type of spaces/facilities that you think we should have more/less/change to make SG more inclusive? (*Discuss Strategies*)
3. Given our limited land, what are some creative solutions to balance our needs to make Singapore more inclusive? (*Discuss Trade-offs*)



Adaptable & Resilient SG

Let's discuss these questions:

1. What does adaptable and resilient mean to you in terms of the a. future of work, b. the future of living, c. the future of the environment and d. future of mobility?
2. Which are the type of spaces/facilities that you think we should have more/less/change to make SG more adaptable and resilient? (*Discuss Strategies*)
3. Given our limited land, what are some creative solutions to balance our needs to make Singapore more adaptable and resilient? (*Discuss Trade-offs*)



Let's discuss these questions:

1. What does sustainable mean to you in terms of the a. future of work, b. the future of living, c. the future of the environment and d. future of mobility?
2. Which are the type of spaces/facilities that you think we should have more/less/change to make SG more sustainable? (*Discuss Strategies*)
3. Given our limited land, what are some creative solutions to balance our needs to make Singapore more sustainable? (*Discuss Trade-offs*)



Distinctive & Endearing SG

Let's discuss these questions:

1. What does distinctive and endearing mean to you in terms of the a. future of work, b. the future of living, c. the future of the environment and d. future of mobility?
2. Which are the type of spaces/facilities that you think we should have more/less/change to make SG more distinctive and endearing? (*Discuss Strategies*)
3. Given our limited land, what are some creative solutions to balance our needs to make Singapore more distinctive and endearing? (*Discuss Trade-offs*)

Additional Prompter Questions for Facilitators:

1. What does inclusive/sustainable/adaptable & resilient/distinctive & endearing mean to you in terms of the a. future of work, b. the future of living, c. the future of the environment and d. future of mobility?

▪ *Prompter questions below:*

- *How does your ideal city enhance the workplace, living and natural environment for future generations?*
- *Why is this aspect important to you personally? What does it mean to you/family/friends/community?*
- *The discussions will have implications beyond ourselves, so try to keep in mind that the solutions we come up with today will have to apply to society at large.*
- *The topics and themes discussed will be for the LONG-TERM, so it's ok if the ideas we come up with may only be achieved 50 years into the future.*

2. Which are the type of spaces/facilities that you think we should have more/less/change to make SG more inclusive/sustainable/adaptable & resilient/distinctive & endearing? (Discuss Strategies)

▪ *Prompter questions below:*

- *Can you share some examples/describe to me what you think will help build inclusivity/sustainability/adaptability for the built environment or make sg more distinctive and endearing?*
- *What kind of spaces/facilities will you like to see more that may already be present in your neighbourhood/environment?*

3. Given our limited land, what are some creative solutions to balance our needs to make Singapore more inclusive/sustainable/adaptable & resilient/distinctive & endearing? (Discuss Trade-offs)

▪ *Prompter questions below:*

- *Can you share some examples/describe to me what you think will be the possible trade-offs in order to make our city more inclusive/sustainable/adaptable & resilient/distinctive & endearing?*
- *How do you think we can balance our needs based on the trade-offs identified?*
- *If there are ideas that can be implemented quite easily, Facilitator to ask participants whether they'll consider doing starting something themselves (i.e. Alliance for Action) and we will link them up to relevant agencies.*

3 Submit Your Ideas

Pillar: Inclusive Sg

Long-Term
Plan Review

Future of Work

What does inclusive mean to you in terms of work?

Future of Living

What does inclusive mean to you in terms of living?

Future of Environment

What does inclusive mean to you in terms of environment?

Future of Mobility

What does inclusive mean to you in terms of mobility?

Pillar: Inclusive Sg

Long-Term
Plan Review

2. Which are the types of spaces/facilities that you think we should have more/less/change to make SG more inclusive? (*answer on Strategies*)

More

Less / Change

Pillar: Inclusive Sg

Long-Term
Plan Review

3. Given our limited land, what are some creative solutions to balance our landuse needs to make Singapore more inclusive? (*ans for Trade-offs*)

Empty response area for submitting ideas.

Pillar: Adaptable & Resilient Sg

Long-Term
Plan Review

Future of Work

What does adaptable & resilient mean to you in terms of work?

Future of Living

What does adaptable & resilient mean to you in terms of living?

Future of Environment

What does adaptable & resilient mean to you in terms of environment?

Future of Mobility

What does adaptable & resilient mean to you in terms of mobility?

Pillar: Adaptable & Resilient Sg

Long-Term
Plan Review

2. Which are the types of spaces/facilities that you think we should have more/less/change to make SG more adaptable & resilient? (*answer on Strategies*)

More

Less / Change

Pillar: Adaptable & Resilient Sg

Long-Term
Plan Review

3. Given our limited land, what are some creative solutions to balance our landuse needs to make Singapore more adaptable & resilient? (*ans for Trade-offs*)

Pillar: Sustainable Sg

Long-Term
Plan Review

Future of Work

What does sustainable mean to you in terms of work?

Future of Living

What does sustainable mean to you in terms of living?

Future of Environment

What does sustainable mean to you in terms of environment?

Future of Mobility

What does sustainable mean to you in terms of mobility?

Pillar: Sustainable Sg

Long-Term
Plan Review

2. Which are the types of spaces/facilities that you think we should have more/less/change to make SG more sustainable? (*answer on Strategies*)

More

Less / Change

Pillar: Sustainable Sg

Long-Term
Plan Review

3. Given our limited land, what are some creative solutions to balance our landuse needs to make Singapore more sustainable? (*ans for Trade-offs*)

Empty response area for submitting ideas.

Pillar: Distinctive & Endearing Sg

Long-Term
Plan Review

Future of Work

What does distinctive & endearing mean to you in terms of work?

Future of Living

What does distinctive & endearing mean to you in terms of living?

Future of Environment

What does distinctive & endearing mean to you in terms of environment?

Future of Mobility

What does distinctive & endearing mean to you in terms of mobility?

Pillar: Distinctive & Endearing Sg

Long-Term
Plan Review

2. Which are the types of spaces/facilities that you think we should have more/less/change to make SG more distinctive & endearing? (*answer on Strategies*)

More

Less / Change

Pillar: Distinctive & Endearing Sg

Long-Term
Plan Review

3. Given our limited land, what are some creative solutions to balance our landuse needs to make Singapore more distinctive & endearing? (*ans for Trade-offs*)

Empty response area for submitting ideas.

4 Keep Engaged

KEEP ENGAGED THROUGH SOCIAL MEDIA

Find out more about LTPR here



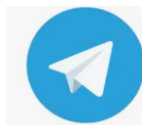
Share materials and your views on LTPR on your own social media **#LTPR2021**



[@urasingapore](#)



[@URAsg](#)



[@urasingapore](#)



[@urasingapore](#)

LinkedIn

[@urasingapore](#)

KEEP ENGAGED THROUGH SOCIAL MEDIA

To connect with us, scan the QR code below to leave your details with us

