

# 55 SPOTTISWOODE PARK ROAD

Old-world Glamour



**Owner:**  
*Ms Louise Martin*

**Architect:**  
*RichardHO Architects*

**Engineer:**  
*JS Tan & Associates*

**Contractor:**  
*U.SAGE Contracts Pte Ltd*

*Stepping inside the enchanting spaces of this fully-restored, three-storey pre-war terrace house is as magical as time travel itself. Articulately preserved, the original property has been given a multi-tier rear extension that also celebrates the romance of vintage terrace house living married with its owners' collections from many global travels.*

## **A Grand Arrival**

The project team put in great effort to restore the façade of this conserved house - from repairing and repainting of the original doors and windows to the reinstatement of the square vents above the two main facade windows. The idea of building an ornate new staircase to stand in place of the original structural wall at the entrance hall has made way for a seamless living space into the innermost sanctums of home's ground level. This flow-through concept also brings out the new nucleus of the house, the modernised version of the traditional open-to-sky central courtyard area which is now a dramatic water feature.

## **Light From Above**

With windows and openings mostly restricted to the front and rear of the house, the revitalised open-air courtyard space acts as the pillar of light illuminating all levels of the home while providing healthy cross-ventilation. The surrounding living spaces gravitate towards the light



*Transitional-style terrace house beautifully restored*

resulting in a nostalgic interplay between shadow and brightness, recapturing a unique light quality peculiar to a home such as this in the past. A motorised roof that retracts into a rear wall discretely keeps wet weather out.

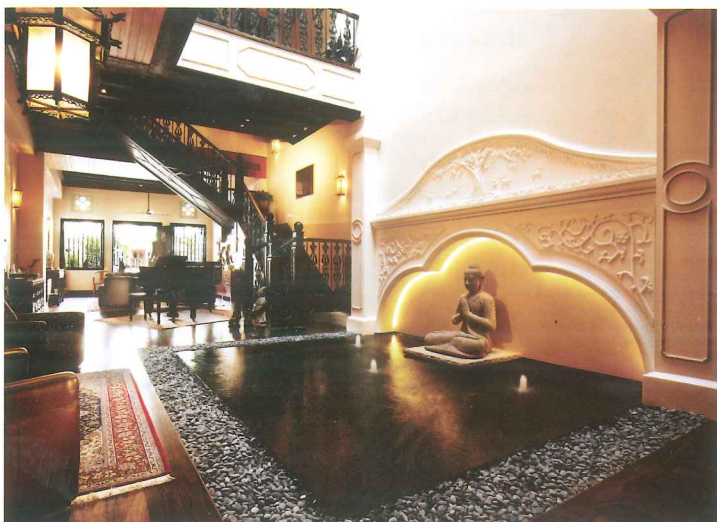
## **Treasures Within A Treasure**

To illuminate this home and all its treasures, the architect has cleverly interspersed internal doors and windows to bring more natural light into the living spaces. The owners' selection of intricate cast iron balusters for the main stairway and carved screens were sensitively integrated into the home's interior. A priceless antique lantern that came with the original house was also retained.

Borrowing generously from the language of the original house, the new four-storey

extension at the rear of the property perpetuate the theme of deep dark woods, featuring lavish-size rooms in spatial proportions consistent with the original. Special touches such as the newly introduced oriental-inspired lattice screen overlooking the rear courtyard add to the global glamour of this gallery home to stunning effect.

Overall, the new integrates beautifully with the old house. The newly carved-out spaces, including the modern infinity pool at the rear upper deck, echo the design language of the original while meeting the needs of contemporary living.



*Open-to-sky central airwell bringing in light and air to internal spaces*



*Bedroom at upper storey*



*Main stairway with cast iron balusters and open circulation spaces doubling up as display areas*



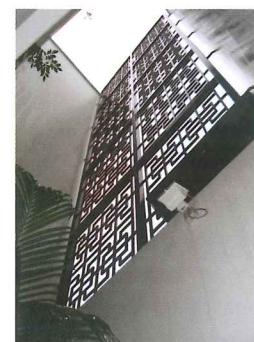
*Swimming pool over rear courtyard*



*Pintu pagar fitting main door with customised timber latch lock*



*Square vent with concrete infill of original design*



*Oriental inspired steel lattice screen at rear facade*