

No. 45 EMERALD HILL ROAD

Restored for City Living



2001 AWARD

Owner:

Jomo Pte Ltd

Architect:

Chan Sau Yan Associates

Engineer:

Babtie Harris & Sutherland (Singapore)

Contractor:

Chin Kok Kwong Design & Build

This is a three-storey terrace house of the Late Shophouse Style located in the Emerald Hill Conservation Area. It was built in 1903 by Mr M. T. Moh and has a distinct Chinese entrance gate with a Chinese roof. It is not a typical unit as it has a wider than usual frontage. The owner chose to conserve the building in its entirety and forego the option to build a rear extension up to the eaves of the main roof.

The house was dilapidated prior to restoration. The roof structure and beams around the central courtyard were badly affected by wet rot. The 3-R principle of maximum retention, sensitive restoration and careful repair was observed. Much effort was made to study and document the important features of the house before restoration began.

The house was converted into six apartments, with two on each storey while retaining the original cellular structure. They are served

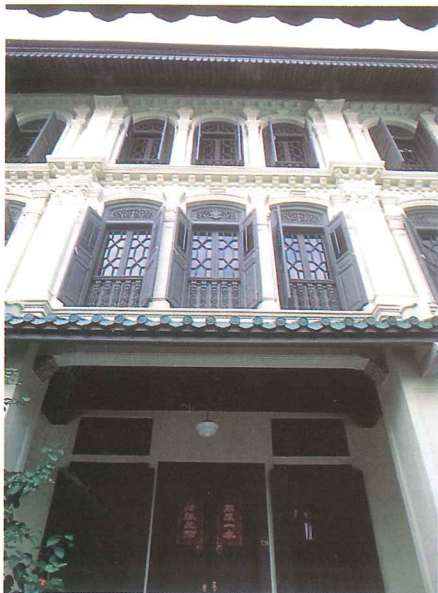


Sensitively restored terrace house

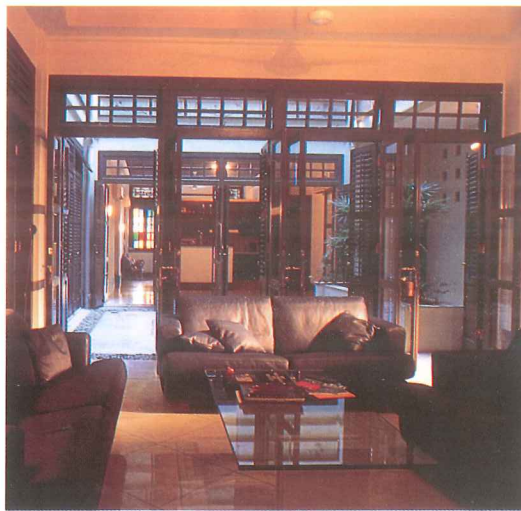
by a generous common corridor introduced on the left side of the building at ground level. All the original architectural elements, ornaments and features of the building were retained and restored. The main timber door for the front unit at the first storey facing the forecourt was retained and restored, complete with its Chinese calligraphy. Also restored were Chinese-style motifs carved out of granite pieces and fixed onto the underside of the beams and column junctions fronting the forecourt, as well as the Chinese-style figurine fanlight above the timber-framed windows and doors. The coloured glass panels on the internal windows were carefully

salvaged and put back on the restored window panels. Chinese craftsmen were also engaged to restore the Chinese-style entrance gate and the decorative spandrel panels framing the central courtyard.

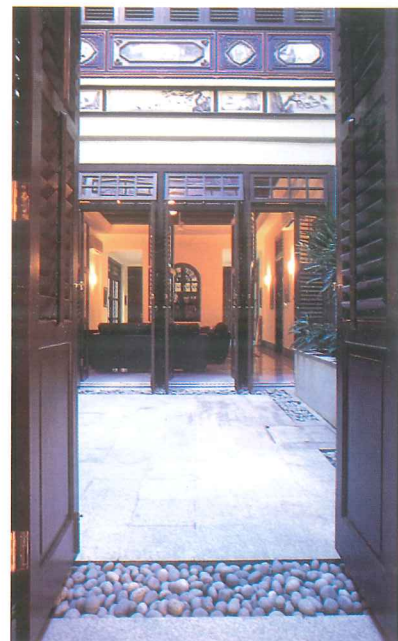
Through these efforts, the house was restored and adapted for city living.



Front facade features retained and restored



Tastefully furnished interior



Central courtyard with decorative spandrel panels



Colonnaded covered five-foot way retained



Chinese-style entrance gate



Coloured glass panelled windows kept



Carved granite bracket



Main timber door with Chinese calligraphy

No. 45 Emerald Hill Road is a three-storey terrace house built in 1903 by Mr. M.T Moh. It is the last unit in the row of terrace houses starting with No.39 which features a distinct Chinese grand entrance gate with Chinese roof tiles over the forecourt wall facing the street. Unlike the other three units, No.45 has a wider than usual frontage, measuring 11.21m in width, which is not common in typical terrace house. The building fabric was badly deteriorated and the existing house was in a state of disrepair when the present owner bought it. The original layout of the house was for communal living where each floor was partitioned up into smaller rooms to accommodate many occupants sharing common facilities like kitchens, bathrooms and living rooms at each floor.